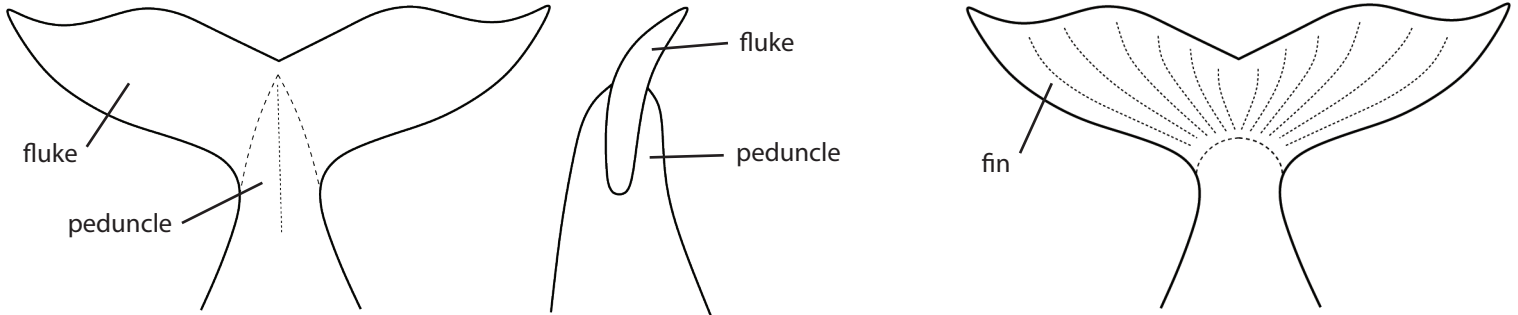


Whale / Mermaid Tail

Pattern by Eric Gaasland

It's a two-for-one project! Same blank, but two carving options (more if you're creative).



If you've decided to carve the whale-tail (above left and middle), other than possible barnacles or scarring, the tail flukes should be pretty smooth. The part of the tail leading up to the flukes is called a "peduncle" and sticks out a little. The tops of whale tails are typically colored darker than the underside.

If, however, you've decided to carve the mermaid tail option (above right), then think FISH. The tail-to-fin contact should be smooth, without the peduncle. Unless of course your mermaid is part whale? As for coloring - yes - color is good. Pick a color! Or colors!



Carved & painted whale tail