

The Curling Chip



January/February 1998

Official Newsletter of the Flickertail Woodcarvers, Bismarck/Mandan, North Dakota

A Message from the President

The executive committee has met and set up special classes for the upcoming months. Harold Enlow will be coming in April. He has been here on several occasions in the past. Most members who have taken his classes in the past really enjoyed his relaxed style of teaching and have learned a great deal from him. He does a great job teaching faces, hands, expressions and tool sharpening. Harold has written several books and we have some in our library. He has gained a reputation as being an outstanding carver on the national level. You have an opportunity to sign up for this class now, the enrollment forms are in this newsletter.

Frank Koch will teach a class on carving an old sea captain. This class will be taught on four consecutive Tuesday evenings beginning on January 20. Frank is truly one of our better carvers in the club and also a great instructor. Each club member who attends these classes will learn many new skills. Sign up today.

Bob Matzke has volunteered to teach a class on carving a sunfish in February. Bob is one of our club's better carvers. He enjoys carving all animals, birds, and fish. Anyone who enjoys or wants to enjoy carving fish should take this class. Bob will assist the students in learning the skills of carving the sunfish.

Bob Pedigo will teach a class on painting the Walleyed Pike. Bob is a very skilled fish painter and an extremely good communicator. He will assist the students in learning the skills of painting the fish. This class will start in March. This is a class for almost every member of our club.

We have Tom Wolfe coming to our annual show in October. He will teach a class on carving the hound dog. Tom has written many books and has several videos, some of which are in our library. You'll hear more about Tom at a later date. We are

hoping to have two gentlemen from Montana come to teach a class on Cottonwood bark carving. This will be a unique experience for all. We'll tell you more if we can make the arrangements.

Gordon Dietrich, President

Dues Are Due

The Flickertail Woodcarvers Club has changed its membership year to January 1 to December 31. This is now the time of year to pay your dues to remain a member. Your support makes it possible for the club to provide a newsletter, purchase library materials, and sponsor wood carving activities during the year. We were pleased to see many of you during the annual Flickertail Woodcarvers show and hope to see you at future meetings.

For those who have not renewed your membership, please do so now by paying dues of \$10.00 to Sam Lacher at a meeting, or mailing your renewal to Flickertail Woodcarvers, Attention: Membership Chairman, PO Box 7473, Bismarck, ND 58507.

Anyone who renewed their membership in the Fall of 1997 according to the old dues schedule is current until January 1999 - please don't send another renewal at this time. We also enacted a new club bylaw which allows membership for a fourteen month period to new members who join after November 1. Any new member who has joined since November 1, 1997 doesn't need to pay dues again until January 1999.

(Article compiled from dues announcement and bylaws.)

**** The way out of trouble is never as easy as the way in. ****

Carving Tips

Compiled by Art Tokach

In the first part of this article (Mar/April 97, pg 6) I said that several people have influenced my carving education. I've believed for some time that just belonging to our club is an education at every meeting. There is something to be learned every time. Some of the things I have learned from other members.

Always keep your carving centered on your wood, always draw a center line and try to maintain it to the end, just before final carving and/or finishing.

Pencil marks are used as a reference only, either cut them away or erase them. Sanding pencil marks will just smear them. Avoid putting too much pencil detail in as it tends to confuse you and it usually gets cut away.

Keep both hands on your tools and your work piece and always cut in a safe direction. Use your left thumb as a fulcrum and push the knife through the wood. You get more power and it is under control at all times as both your hands are behind the cutting edge.

Always clamp or secure your work to your work surface. A non-skid pad under flat work is usually adequate. One slip can be dangerous to you and your work.

There are many uses for a Band-Aid besides keeping the blood off your carving. It pads a sore spot on a seldom used area, such as on a novice's finger.

It takes less time to sharpen and strop a dulled edge than the time needed to rectify the error or the slip when extra force is needed to push a dull tool through the wood.

Expensive tools alone do not make you a better carver, it still takes the know-how and sharp tools to make a great carving better.

Have a small project near to your sharpening and stropping tools that you can use as a test before returning to your work. When it gets near to being completed, by finishing the test piece you can make someone happy with a priceless gift.

It takes a lot of practice and many mistakes to learn how to sharpen your tools correctly. It is not learned overnight or at one session. Many carvers

never master it and they end up with shorter, dull tools.

It is not wise to use a power stropper or sharpener until you have a good understanding of sharpening with a bench stone or a strop stick. Metal is removed much faster and many good tools can be ruined.

If a tool begins to tear the wood instead of cutting it, first try stropping. Seventy-five percent of the time this is enough. If stropping doesn't cure it, then it's time to get out the sharpening stone.

Seventy five percent of your carving is done with the first twenty-five percent of your knife blade. So keep that part thin and sharp and use the other part for heavy carving where you can add more power with your thumb.

Book Review

By Bob Matzke

CARVING THE NATIVE AMERICAN FACE, By Terry Kramer, 1995, Published by Schiffer Publishing Co., Atglen, PA.

The author, a teacher by profession, but a woodcarver by desire, has been carving and teaching for over 20 years. One can find examples of his work in galleries through out the world. In this 64 page soft cover book, the author exposes us to his techniques and expertise. This book has some good pointers for the practiced carver as well as the beginner.

After a short introduction, the author goes right to the face. Did you know that your head is five eyes wide? Or that your face is divided into three equal parts below the hair line? I wonder if it's the same for bald men?

You will be exposed to development of a pattern and how to match it to a selected piece of bark or wood. You will learn how to cut and use templates to assist the carving process. Once the reader has this material, the author starts the step-by-step photograph demonstration.

The project is an Indian Brave in bark. The demonstration covers everything from carving, detailing to finishing. You'll know how to carve the nose, chin and even the glint in the eye. The author tells his secrets on finishing bark carvings. You might be surprised to learn that he paints the carving

totally black in one of the steps. However, the end product is something to be proud of.

This book is basically a photographic how-to. There are 217 photographs in the step-by-step and 17 more pages of the gallery examples. The photographs are in full color and easy to follow and understand. This is a good book to check out. This book is available for check out from the Flickertail Woodcarver's Library or you may purchase it from book outlets for around \$15.00.

Senior Carving Sessions

by Gordon Dietrich

Did you know that we have a senior carving group in both Bismarck and Mandan. The Bismarck group meets at the Burleigh County Senior Center each Thursday from 1:00 to 3:00 PM and Mickey Tokach is the advisor. The Bismarck group meets from October to May and suspends activities during the summer. In Mandan members meet at the Liberty Heights Activity Center each Monday from 1:00 to 3:00 PM throughout the year and Art Tokach is this group's advisor. The senior citizens do a great deal of carving and much visiting. They share ideas on how to overcome carving difficulties. Mickey and Art are able to provide many solutions to the problems discussed at these sessions.

Do you know of any senior citizens who you feel would enjoy carving with these groups? Call Mickey or Art at _____ to get them involved.

Thanks to One of Our Members

submitted by Kay Koch

I don't know if you recognize that when you enroll in one of the wonderful visiting carver workshops that the club offers, the price you pay is often less than what the artist is charging the club per member. These price reductions are possible due to grant funds received from various arts organizations. One of our members has been the driving force for our success in obtaining these grants. John Opp is that fellow carver to whom we can say a big THANK YOU. His grant submittals are meeting the criteria because the club has been blessed with financial support from the Dakota West Arts Council since he began submitting applications.

The next time you see John say, "Thank You." His hard work has helped us put on high quality seminars at lesser overall cost to us.

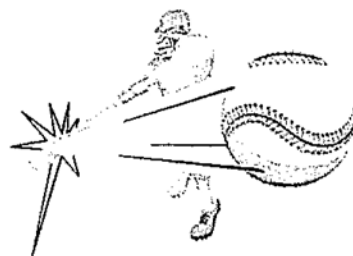
Thanks to Another Outstanding Member - submitted by Gordon Dietrich

Many members of our club are actively involved in club activities. One of these members is Frank Koch. He is on the executive committee and is the club Program Chairperson. Frank attends almost all meetings and he was instrumental in our club members carving a group project, the Flickertail Ranch scene. He arranged for this project to be displayed at the Bismarck Public Library and is working with other people for possible display of this scene.

He coordinated the Christmas ornament project for the Bismarck Art and Gallery Association Festival of Trees. This resulted in over sixty ornaments donated by club members for display on this tree. Frank is also the chairman of our annual show and arranged for all classes and the accommodations and meals for the show. He already is at work on ideas for next years show --- we believe you'll like the results. Keep up the good work Frank!!!!

Take Me Out to the Ball Game

Frank Koch is busy carving a baseball team (the Minnesota? Twins) and the opposing team. Many pieces are required to



complete the scene; i.e. team mascots, beer and peanut vendors, fans, grandstand, ballboys, etc.

Would you be willing to share in this adventure? Confirmed showing dates are set for September-October 1998 at the Bismarck Public Library, and November-December 1998 at the Hauer University of Mary Gallery. The North Dakota Heritage Center is tentatively scheduling a baseball theme exhibit in the future and have expressed interest in this display. Contact Frank Koch at _____ for more information.

Upcoming Class Announcements

Carving the Sea Captain

A class on carving a sea captain will begin on Tuesday, January 20, 1998 at 7:00 PM. This class will continue for a total of four two-hour sessions meeting weekly. Week one will cover roughing out the cutout, week two will cover carving faces on a practice stick and on the sea captain, week three will complete carving, and week four will complete painting. Cost is \$35.00 for the entire class which includes the sea captain cutout. You may carve the first mate for an additional cutout cost of \$5.00. Contact instructor Frank Koch at to register for the class.

Carving the Bluegill Sunfish

A class on carving the Bluegill Sunfish will be conducted by Bob Matzke on February 14. This class is to begin at 8:00 AM and end the same afternoon at 4:00 PM. Bob thinks everyone should be finished with the carving in one day. Cost for the class is \$15.00 plus approximately \$7.00 for the cutout and eyes. Contact Bob at a meeting or at his home by February 1 if you're interested.

Chip Carving Basics

Art Tokach will teach basic Chip Carving classes at his home in the afternoons. The classes will be a one-on-one session which will last about three hours. Cost for these classes will be \$10.00 per session. Contact Art at to schedule a time.

Fish Painting Using the Airbrush

A class on airbrush painting a Walleye Pike wood carving will be led by Bob Pedigo. This class is tentatively scheduled for March 21, 8:00 AM to 5:00 PM at Bismarck State College VoTech Center in their Art Room. Jack Kline, BSC's outstanding air brush instructor, will begin the session with a class on basic air brush

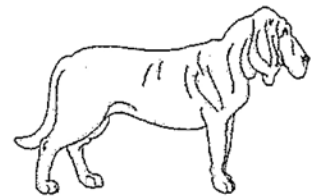
operation, maintenance, etc. Following this basics class, Bob will provide a demonstration and instruct on painting the walleye. Cost should be in the neighborhood of \$10.00 or less. Contact Bob at a meeting or at home by February 21 if you're interested.

Carve For a Full Weekend with Harold Enlow, One Day Seniors Session Also Set for Monday

Harold Enlow will once again come to Bismarck the last weekend of April (Apr 25, 26, 1998). Harold is one of the best, if not THE BEST, caricature carver in the United States. Harold offers instructions on varied subjects. Included will be Harold Enlow "roughouts" which must be selected in advance of the class to allow shipping in time for the instruction. Harold will also assist in carving any of your own cutouts or patterns, tool sharpening and just about any other carving related subject you have questions about. We have also arranged for a one day seniors session to be held at the Burleigh County Senior Center for Monday, April 27. Cost for the weekend session will be \$80.00 per student for members, \$90.00 non-members. The one day senior session will be \$25.00. You won't want to miss these information packed special classes. Sign up using the form included in this newsletter.

Tom Wolfe to Teach Class in October

Tom Wolfe will be teaching a class on carving dogs on Thursday and Friday, October 8 & 9, 1998. These are the two days just prior to our annual show on October 10 & 11. Tom will also be teaching morning classes during our show. Plan to sign up for this class when the registration form comes out in our July newsletter.



Flickertail Woodcarvers Class/Seminar Registration

Instructor: Harold Enlow, Saturday and Sunday, April 25 & 26, 1998

Cost: \$80.00 Members, \$95.00 Non-Members, Deposit of \$30.00 Must Accompany Registration

Name: _____

Street Address: _____

City, State, Zip: _____

Telephone Number: _____

Return completed form, including deposit, to Frank Koch,

NOTE: It is club policy that cancellations within 30 days of the class will result in forfeiture of your deposit . However, if your vacated position in the class is filled by another student, the full deposit amount will be refunded to you.

Flickertail Woodcarvers Seniors Class/Seminar Registration

Instructor: Harold Enlow, Monday, April 27, 1998

Cost: \$25.00, Deposit of \$10 Must Accompany Registration

Name: _____

Street Address: _____

City, State, Zip: _____

Telephone Number: _____

Return completed form, including deposit, to Frank Koch,

NOTE: It is club policy that cancellations within 30 days of the class will result in forfeiture of your deposit . However, if your vacated position in the class is filled by another student, the full deposit amount will be refunded to you.

Flickertail Woodcarvers Election Ballot
Mail In Ballots Must be Received by February 21, 1998

(Vote for only one candidate for each office.)

President-Elect:

____ No Nominee

(Write-In)

Secretary:

____ No Nominee

(Write-In)

Librarian:

____ Bob Matzke

(Write-In)

Membership:

____ Stan Skarpohl

(Write-In)

Newsletter:

____ Bob Pedigo

(Write-In)

Member-at-Large

____ Dan Chaussee

(Write-In)

Bring ballots to February 21 Annual Meeting

or

Mail ballots to:

Flickertail Woodcarvers
PO Box 7473
Bismarck, ND 58507

"Uncle Flicker Needs You!"

About a year ago, Bob Matzke wrote a "directly to the point" article in our newsletter about club health. He pointed out that without the assistance of many members, our club's long term health would be in jeopardy.



This is still the case today. We need help from our members to continue to be an active, growing organization. We have been fortunate in the past to have a very active core of people who have put in the extra effort to keep our club healthy and growing. Several of those members have decided, for various reasons, that it's time to move on and that they no longer wish to put in the time required to perform these functions. We owe them a great deal of thanks for the effort they gave the club and our members!! Unfortunately, more people are stepping down than there are volunteers to take their place.

We hope that we can find new people step in behind them to continue with those functions.

Our elections are to be conducted in February. In the past it has been very difficult to fill the ballot with one name per office of people who would like to serve and I suspect this probably hasn't changed a great deal. Officer positions provide opportunities for someone to become more involved. Don't be shy! You may have an interest and we are not aware of it. If you'd wish to become more active by assuming a leadership role in the club, mention it to one of our board members. We'd be pleased to have you.

Each time our executive board meets we discuss who will lead the projects at our meetings and whittle-ins. Looking at our project leaders over the last three to four years, the same names continue to be apparent. One executive board member observed that in the time he's been with the club over 400 different ideas have been provided by people who have led the projects and maybe some of those folks are running out of ideas.

It would help if the ideas of the project leaders were bolstered by some new ideas. It would help to have more members either to lead projects, or to provide ideas of projects they'd like to see offered at our meetings and whittle-ins. I have made a standing offer to assist someone who doesn't have a band saw to do cut outs for their project at no cost as long as the materials and a pattern are provided.

I will assist a project leader to provide instruction, and I know of others who have said they would assist anyone who has volunteered to lead a project for the first time. This should help those who have an idea, but aren't sure if they could actually teach that project to others.

Project ideas would also be beneficial from those who don't wish to lead a project, but think a particular project would be interesting. I would be willing to accept someone else's idea for a project and to lead a project which would be interesting for the entire club.

Do you want to be a club officer? Can you lead a project? Do you have an idea to share which would be a good whittle-in or meeting project? Can you support our newsletter with an article or photograph? Can you accept a short one-time assignment of a task by our president to do a particular job? If so please speak up, our club needs your ideas to grow and remain healthy.

Bob Pedigo, Past-President

Election Time

Our annual elections are scheduled for the regular club meeting on February 21. If you can't be present and would like to vote for officers, a mail-in ballot is included in this newsletter. This year we must elect a President-Elect, Secretary, Librarian, Membership Chairperson, Newsletter Editor, and Member-at-Large.

If you will be attending our annual meeting on February 21, you can submit your ballot in person at that time.

Bob Pedigo, Past-President/Newsletter Editor

Book Review

By Bob Matzke

BUFFALO DREAMERS, by John Burke
1995, Published by Countrytime Press,
Ithaca, NE.

John is one of the leaders in Indian style carvings. He has extensive knowledge and collections in this field. He has compiled 77 black and white photographs from his collections to share with us in this soft cover book. Included are many notable Indian Chiefs and Leaders, along with women and children. There are some examples of their way of life. Many of the photographs are full page.

There is no text in the book, with the exception of the Introduction. This leaves the viewer questioning who the subjects are. John states that this book is but a resource for the Native American style carvers. It will provide one with the facial features, clothing, etc. of the turn of the Century Indian People. Any carver using this resource book should be able to design a number of quality patterns of their own.

If you're into this style of carving or want to expand your interests, this is the book for you. The photographs lend themselves to other areas of art, such as drawings, paintings, pyrography to name a few. This book is available for checkout from the Flickertail Woodcarvers Library or it can be purchased from many book outlets for around \$13.00.

Book Review

By Bob Matzke

CARVING SMALL ANIMALS, An Artistic Approach, By Desiree Hajny, 1996, Fox Chapel Publishing Co. Lancaster, PA.

Attention all wildlife carvers, this book is for you. Desiree has put together directions for rabbits, raccoons' and squirrels in the round. There are six chapters in this book of 55 pages. In the showcase chapter we find some great poses for the above three species. Some you'll want to incorporate into your carvings. The research

chapter provides important directions. Since you'll be carving true to life, you will need accurate information on size, skeleton, species and specific details such as faces, feet, & habitat. These are provided.

Desiree then shows her techniques for carving the more difficult areas like noses, eyes, ears and feet. She includes details for hair tracts which allows you to produce life like carvings. The step-by-step demonstration is on a standing cotton tail rabbit. 15 pages of full color photographs are provided. The process is clear and easily understandable. In the last Chapter; Using, Altering ;and Creating Patterns, Desiree encourages the use of the patterns provided. As you advance your ability, she suggests that you begin to alter and create new poses of your own.

This is a great book, one you'll want to get access to soon. This book is available for check out from the Flickertail Woodcarvers Library or it can be purchased from book outlets for around \$15.00.

Band Saw Blade Tips

by Bob Pedigo

I received a tip from Frank Koch about a local shop which sells Olson band saw blades. The shop is called Deco-Art Ornamental Iron. Deco-Art makes decorative wrought iron rails, window dressings, and similar items, so I never dreamed they would also sell band saw blades. They are located at 2403 East Bowen Avenue in Bismarck which is south of the Big Boy on East Main.

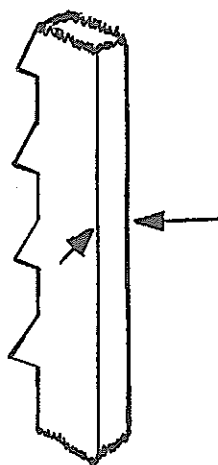
I use these blades on an old Sears 12" band saw. I found Deco-Art had the correct blade for my saw and just about any other model band saw. They also advertise they will cut blades to length for special purpose use.

I selected a 3/16" by 80", 4 teeth per inch, skip-tooth blade at the recommendation of Frank. These blades stay sharp much longer than the ones I've been buying at Sears. I also discovered that these blades can be used for cutting just about any wood carving. The 3/16" width allows for very tight turns while cutting. An added bonus is the thickness of these blades is .025" as compared to the Sears blade thickness of .016". The increased

thickness of the blade permits ripping wood without the characteristic "wandering" I was observing with the thinner Sears blades. Now I don't need to change to a wider blade for ripping. (And I don't have to make all the necessary saw adjustments which are necessary when you change blades.) This is a real time saver to have one blade which does it all.

These Olson blades also have the same guarantee as the Sears blades. If it breaks at the weld, take it back and it will be replaced with a new one. I recently had my first blade break since I began using them over a year ago. This blade was replaced immediately by the shop owner without question following a short visual inspection to assure it had broken at the weld.

I also got another tip from the gentleman who owns the shop. He said that when a new blade is installed and your saw is set up properly, take an abrasive stone and lightly hold it to a back corner of the blade for a minute or two while the saw is running. (See areas indicated by arrows in diagram) Do the same to the other back corner



for another minute or two. This will round off the sharp corners on the back side of the blade to allow for easier turns in wood while cutting. The rounded back corners don't catch in the wood when making tighter turns.

This makes sense to me. Harold Enlow teaches that the same technique works for a carving knife --- you round off the corners on the back edge of the knife blade for easier carving. I now do all my carving knives that way and it works! Since I just put a new saw blade in my band saw, I'm going to try this tip on that new band saw blade too.

Mississippi Mud Bars Recipe

| | |
|-----------------|--------------------|
| 4 Eggs | 1 ½ Cup Flour |
| 1 Cup Margarine | ¼ Cup Cocoa |
| 2 Cups Sugar | 1 Cup Chopped Nuts |

1 tsp Vanilla
Dash Salt

1 7 Oz Jar Marsh-
mallow Creme

Mix in a bowl at medium speed; eggs, margarine, sugar, and vanilla until fluffy. Add flour, salt, cocoa. Beat until well blended. Fold in nuts. Spread evenly in greased 9" X 13" pan. Bake 40-45 minutes at 350°. Remove from oven and immediately spread dollops of marshmallow on top. Let cool before frosting.

Frosting

| | |
|--------------------------|----------------|
| 1/3 Cup Margarine | 1/3 Cup Milk |
| ½ Cup Cocoa | 1 tsp. Vanilla |
| 2-1/2 Cup Powdered Sugar | |

Add milk and margarine to sauce pan. Cook for one minute. Add remaining ingredients. Mix until smooth. Spread over marshmallow creme. Karen Pedigo says these give you a burst of energy for carving during these long winter nights.

Library Items Missing

We are missing some items from our club library. These items were checked out without filling out the check out card, so we have no record of who has them. We will publish a list of missing items in the next newsletter to request their return.

As a reminder to all members, library materials are to be checked out for one month at a time and only by current members. Members who borrow library items must return them at the whittle-in or regular meeting one month following their check-out.

Please check to see if you have any club library materials which need to be returned.

*****Obituary*****

Mark Fjeld We recently learned of the death of Mark Fjeld, a fellow wood carver from Park River, North Dakota. He was 49. Mark was the first visiting instructor the Flickertail Woodcarvers hosted from outside the Bismarck/Mandan area. He instructed wildfowl carving during his class here.

We wish to extend our condolences to the family and friends of Mark at this sad time.

Calendar of Events

| | |
|---------------|---|
| Jan 17, 98 | Meeting at New Song Church 9 - 11 AM. Project: Guitar Bolo Tie by Vince Bitz |
| Jan 20, 98 | Carve an Old Sea Captain Class with Frank Koch. 4 Tuesday nights. Class to be held at New Song Church, 7 - 9 PM |
| Feb 3, 98 | Whittle-In at New Song Church, 7 - 9 PM, Project: Valentine Carving by Frank Koch |
| Feb 14, 98 | Carve a Bluegill class with Bob Matzke. One day class, 8 AM - 4 PM. |
| Feb 21, 98 | Meeting at New Song Church 9 - 11 AM. Project: Cottonwood Bark Castles by Bob Pedigo |
| Mar 3, 98 | Whittle-In at New Song Church, 7 - 9 PM, Project: Leader and/or Idea Needed |
| Mar 21, 98 | Meeting at New Song Church 9 - 11 AM. Project: Leader and/or Idea Needed |
| Mar 21, 98 | Paint the Walleye Pike with Bob Pedigo and Jack Kline. Bismarck State College, 8 AM - 5 PM. |
| Apr 3,4,5, 98 | Red River Woodcarvers Show, Fargo, ND. Contact Bob Lawrence, |
| Apr 7, 98 | Whittle-In at New Song Church, 7 - 9 PM, Project: Chip Carved Cross by John Opp |

| | |
|-----------------|--|
| Apr 18, 98 | Meeting at New Song Church 9 - 11 AM. Project Potpourri by Various Members. These projects will be varied projects from past classes. Any member who has leftover projects from previous meetings, whittle-ins, and classes are invited to bring them to this meeting and should be prepared to assist with any of the selected items. |
| Apr 25,26, 98 | Harold Enlow Weekend Class. Registration Form in January 98 newsletter. |
| Apr 27, 98 | Harold Enlow Senior Session. Registration Form in January 98 newsletter. |
| May 5, 98 | Whittle-In at New Song Church, 7 - 9 PM, Project: Leader and/or Idea Needed |
| Jun 26,27,28 98 | Wahpeton Carving Weekend, Contact Reuben Brownlee, |
| Jul 17,18,19 98 | Waldorf College Carving Weekend, Contact Joy Boykin, Box 308, Tiltonka, IA 50480 |
| Oct 8,9, 98 | Tom Wolfe Class, Carving Dogs. Tom's book, "Going to the Dogs", would be a good reference for this class. Registration to be in July newsletter. |
| Oct 10,11, 98 | 29 th Annual Show, Doublewood Inn |
| Oct 9,10, 99 | 30 th Annual Show, Doublewood Inn |

Next Newsletter Deadline: March 3, 1998 at Whittle-In

Sam Lacher

The Bi-Monthly Newsletter of the Flickertail Woodcarvers

Officers and Executive Board

| | |
|-------------------|-----------------|
| President | Gordon Dietrich |
| Past President | Bob Pedigo |
| Secretary | Karen Pedigo |
| Treasurer | Meg Burke |
| Membership | Sam Lacher |
| Programs | Frank Koch |
| Property | Vince Bitz |
| Librarian | Dee Hammel |
| Member-at-Large | John Opp |
| Member-at-Large | Bob Matzke |
| Newsletter Editor | Bob Pedigo |

| | |
|------------------------|----------------|
| Newsletter Mailing | Mike Senger |
| Newsletter Labels List | Sam Lacher |
| Newsletter Articles | By Our Members |

Whittle-Ins are held the first Tuesday of every month, October through May, 7 - 9 PM. Meetings are held the third Saturday of every month, September through April, 9 - 11 AM. Club Functions are held at New Song Church, 3200, N. 11th St., Bismarck, North Dakota.

The Curling Chip

March/April 1998

Newsletter of the Flickertail Woodcarvers, Bismarck/Mandan, ND

A Message From the President

One important objective of your club is to put on member training sessions. This year has been successful. Frank Koch and Bob Pedigo conducted training sessions for beginning carvers in November and December. We had twenty new carvers take these classes. There were seven carvers from Bob's class which joined the club which is really good for our club.

Starting in January 98, Frank Koch taught a caricature class on carving an old sea captain. The class was full of carvers. In February, Bob Matzke taught a class on carving a Sunfish. There were twelve enthusiastic students. Bob gave personal directions to each student and he had three pages of step by step directions on how to cut out a pattern for carving the Sunfish. This was a fun class.

Coming in March Bob Pedigo will teach a class on painting a Sunfish and Walleye. The students will meet at Bismarck State College and will have Jack Kline, Associate Professor of Commercial Art, assist by teaching basic airbrush technique followed by the fish painting using the airbrush. This also should be a fun class.

In April we have nationally renowned wood carver Harold Enlow coming to teach two classes. One will be a two day class on Saturday and Sunday and on Monday, he will teach a one day class at the Burleigh County Senior Center. Twelve people (full class) have registered for the weekend class with one alternate already on the list. Eleven have registered for the senior class with room for one more as of our February meeting.

In August we will have Gary Ensign from Miles City in to teach a bark carving class. We saw his work at Wahpeton and felt it would be great to have him put on a workshop in

Bismarck. You may register for this class at a later time.

For our Fall class, Tom Wolfe will teach a two day class on carving dogs just prior to our annual show. He is also going to teach morning classes for each morning of the show along with other class offerings conducted by other instructors. These class schedules provide you, our members, with many opportunities to improve your skills. Sign up for the Tom Wolfe classes will also be available later.

The club officers have been hard at work to provide these opportunities for you. I want to take time to thank our program chairperson, Frank Koch, for the work he has done making the arrangements for these classes.

Gordon Dietrich, President

No Meeting on March 21

Because no one is available to lead a meeting or a project, and because most of the club officers will be unavailable to open the church, there will be no meeting on Saturday, March 21.

Our meeting is canceled because of a conflict caused by the fish painting class at Bismarck State College. The fish painting class is being held on March 21 because this is the best day for Jack Kline who will be teaching basic airbrush operations. The room at BSC has been reserved for this day and it is now too late to reschedule due to Bob Pedigo's schedule - if the painting class isn't done on this Saturday, it probably wouldn't be rescheduled until Fall. We regret any inconvenience this causes anyone.

Please plan to be at the next scheduled Whittle-In on April 7. John Opp will lead a nice chip carved cross project for the Easter week.

Convert Your T-square Into a Centering Square

I'm always looking for new ways to use a tool or a device. A centering square is something I often use when I'm drawing on round plates and bowls in my chip carving. I've wondered how I could make one for my drawing kit. I've finally devised one and anyone with a T-square can convert theirs into a more useful tool. Here's How!

A right handed person usually holds the T-square in their left hand and draws on the top side of the blade. These directions are for a right handed person. Mark a center along the top blade edge, about 1/2" into the T. Set your compass to reach from that mark to about 1/8" from the tip of the T. Also cast a second mark on the other side of the T. It is essential that these marks and holes are accurate or the square will have an error that you will need to take into account each time you use it.

Obtain a 1/4" to 3/8" dowel or peg and a drill bit that will make a tight fit when the dowel is inserted. I used a 1/4" wheel axle. Drill the two holes where previously marked. Insert the pegs when ever you need to use the T-square for centering purposes. Store the pegs in your kit when not needed.

Because there may be a slight error in your marking and drilling, whenever you use this device always rotate the plate and cast 3 or 4 lines to the center area. This narrows the center area down to an easy to find center point.

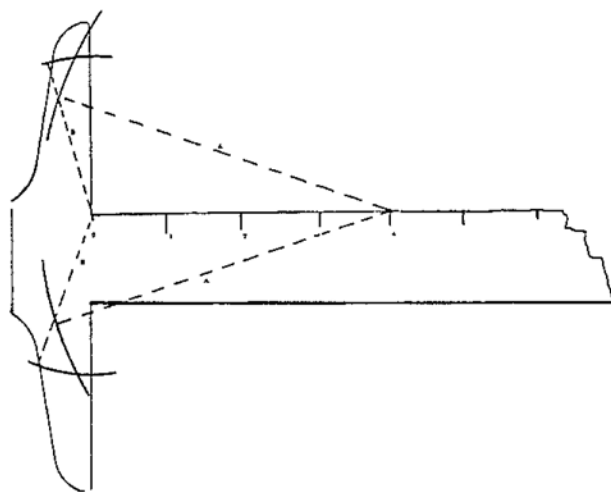
I'll have a drill and pegs at the March and April meetings if you wish to convert your T-square. **NO CHARGE. YOU CAN'T BEAT A DEAL LIKE THAT.**

Art Tokach, Chip Carver

Note: If you select two points along the top of the ruler edge of your t-square and cast two arcs of different radii back to the outside ends of the "T", they will form an accurate drilling mark at the points where they intercept. Be sure to carry the same radii to each end of the "T" when casting each of the two arcs. (See diagram

below) Drill the peg holes as accurately as possible at the arc intercepts. If you mark and drill accurately the top ruler edge should be at exact right angles to the peg holes. This method will eliminate any error introduced if the "T"-top and ruler edge isn't exactly a right angle or if your first construction line described at left isn't exactly where it should be. I bought an inexpensive T-square once which was slightly off. (not exactly 90 degrees). This adaptation of Art Tokach's method should reduce the sources of error.

Newsletter Editor



Red River Woodcarvers Show Announcement

Bob Lawrence, Red River Woodcarvers Show Chairman, announces this year's show will be held in Fargo at the Doublewood Inn on April 3, 4, and 5, 1998. This show is in a similar format to our show. Classes will be held for carvers on Saturday and Sunday mornings, and showing to the public in the afternoons. There are good classes listed for the show this year which you may want to take in. You may contact Bob Lawrence in Fargo or Bob Pedigo in Bismarck for a copy of the show announcement and registration.

Bob Pedigo, Newsletter Editor

A Circle Segmenting Method for Chip Carving

Fellow Chip Carver Dan Nelson of Fargo recently shared a circle division table with me. He had found it in a "Fine Woodworking" reprint book titled "Proven Shop Tips". It is a fast method of dividing a circle into equal spaces. It uses the length of the chord (the straight line distance between two points) of a curved arc or line. It changes for each point or space.

To use, simply multiply the diameter of the circle by the length of the chord listed for the number of spaces or points you wish in your circle.

A Partial List:

| <u>Spaces</u> | <u>Chord Length</u> | |
|---------------|---------------------|---------------------|
| 3 | 0.8660 | Set your dividers |
| 4 | 0.7071 | or compass to this |
| 5 | 0.5878 | size. I use a dial |
| 6 | 0.5000 | caliper that reads |
| 7 | 0.4339 | in hundredths. |
| 8 | 0.3827 | I draw a reference |
| 9 | 0.3420 | gauge of the size. |
| 10 | 0.3090 | I then walk the |
| 11 | 0.2818 | compass around |
| 12 | 0.2588 | the circle to check |
| 13 | 0.2393 | it's accuracy. |
| 14 | 0.2224 | Tweak it if needed |
| 15 | 0.2079 | The full list is |
| 16 | 0.1951 | to 100. |

Where I have found this table to be very helpful is in the drawing of the five and seven point stars. When drawing with Barton's directions in Book #1 a slight error in drawing either one ends in a big error in the final drawing. This method is very fast and accurate. Usually I get a lock on the size after the first walk around.

Another place that this is a benefit is when marking an unlidded bowl where the center is difficult to find. Accurately measure the diameter at the top and bottom lines. With your pocket calculator simply multiply the diameter times the number from the table to find the answer. Draw a gauge and walk the compass around the circle. Repeat for the bottom line. A swirl effect can be

created by dropping back 2 or 3 spaces from top to bottom.

Art Tokach, Chip Carver

Flickertail Woodcarvers Announces Officers for Upcoming Terms

Annual elections were held at the meeting on February 21, 1998. The following offices were filled. President-Elect - John Opp, Librarian - Bob Matzke, Membership - Stan Skarphol, Newsletter Editor - Bob Pedigo, Member-at-Large - Dan Chaussee. One office, Secretary, remains vacant because we could get no one to accept the job. The elected individuals with the exception of John Opp have agreed to fill their offices for a two year term. The president-elect, John Opp, will serve one year as president-elect, two years as president beginning in February 1999, and one year as past president beginning in 2001. We appreciate the officers who are willing to put in extra time to keep our club moving forward.

Bob Pedigo, Newsletter Editor

Harold Enlow Classes April 25, 26; Seniors Class April 27

Harold Enlow classes are set for April. The two day Saturday and Sunday class will be held at the Bismarck Arts and Galleries work room from 8:30 AM to 5:00 PM each day. The senior class will be held at the Burleigh County Senior Center from 8:30 AM to 5:00 PM on Monday.

As of last word from the program chairman, the weekend session is full with one person on the waiting list. There was still one opening in the seniors class.

Bob Pedigo, Newsletter Editor

Carver Makes Her Mark in Bark

St. Cloud woodcarver Gen Jansen writes a book about her latest art form

By John Molene
St. Cloud Times Staff Writer

Gen Jansen has never met a piece of cottonwood bark she didn't like.

The St. Cloud woodcarver turns the weathered bark into works of art – a castle on the Rhine complete with working drawbridge, a row of jumbled, softly painted birdhouses, an elegant lighthouse or a haunting spirit face.

Bark carving is merely the latest outlet for Jansen, a former biology teacher turned professional woodcarver. Jansen also extensively has taught woodcarving classes and written about her craft for the last 15 years.

"I'm not making as much (as a high school biology teacher), but I'm having more fun," Jansen said. "I'm going to live longer."

Jansen's sense of humor comes through in the dedication to her book, "Cottonwood Bark Carving" in which she writes: "This book is dedicated to my husband Ray, who has put up with my bark." Jansen's carving career began when Ray gave her an inexpensive set of carving tools.

Her new woodcarving book replaces her earlier effort "Spirit Faces in Cottonwood," published in 1991.

I'd like to begin by stating that I've never had a cottonwood bark segment in my hands that did not have something inside," Jansen wrote in the foreword. "The shape, size, flaws, and thickness of each segment or connected segments determine what I will carve from that bark."

The 44-page softcover book condenses and incorporates the spirit face section from her earlier book. She added sections on how to carve Santa Claus faces and gnomes.

"The last six years of teaching faces in bark has helped me better to explain the steps needed to achieve an acceptable face," Jansen said.

The book offers step-by-step instruction on finding and carving the right materials and provides examples of the cottonwood bark creations. There are sections on tools and equipment, relief carving (high, deep and low) as well as finishing tips and hints.

It also contains more than 85 drawings and 100 photos, designed to help the cottonwood bark carver move from raw bark to finished product.

Jansen said her passion for bark carving can be traced to Rick Jensen, a woodcarver from Crookston, whose bark demonstration she watched at a show in 1988.

"Now I do a lot of bark carving, because I enjoy it so much more," Jansen said.

Carving takes skill, but it's a skill most can learn, Jansen said.

"I've always said if you can peel a potato, I can teach you to carve," Jansen said. "Once you know your basic cuts and how your tools work, it's not hard."

Jansen creates her treasures using standard woodcutting tools such as knives, chisels and gouges.

Choosing the right bark to carve can be more difficult than finding a piece of wood to whittle. Only cottonwood bark is suitable for carving, and that bark needs to come from trees that have been dead for several years.

"You can't go stripping trees," Jansen said. A tree has to be down for three to four years before the bark comes loose. And cottonwood bark is the only bark that works for carving. The rest are too tough, too thin or too fragile."

While Jansen knows a lot about woodcarving, there are a couple of commonly asked questions which stump her.

Does she know what the finished result will look like before she starts carving? She doesn't.

"I can't tell," Jansen said. "There's no way. It just comes. I may be able to tell if it's a castle, but I don't know what the castle will be."

Another thing she can't answer is how much time it takes her to carve a single piece.

"Twenty years," Jansen answers when asked how long a particular project took. "All the experience I have goes into each piece."

Teaching woodcarving classes all over the Upper Midwest, she has instructed 475 beginners in the last 15 years. She has a woodcarving class scheduled for Thursday and a bark-carving workshop set for Jan. 17 and 18, both at the Whitney Senior Center.

Jansen is also a prolific author. Her "Christmas With Gen" book came out in November. She has a book signing scheduled from 1 to 3 p.m. Jan. 24, at the Arts Co-Op in downtown St. Cloud.

She regularly takes classes and is a member of seven carving organizations. She sells her creations at art fairs, both locally and throughout the Upper Midwest. Her carvings range from \$6 pins to castles which sell for thousands of dollars.

"It's fun," Jansen said of her work. "If everybody has as much fun as I have, the workplace would be happy."

(The above article about Gen Jansen, a member of Flickertail Woodcarvers, is reprinted with written permission from the St. Cloud Times, St. Cloud, MN. It was written by John Molene, St. Cloud Times staff writer, and was originally published in the Times on January 10, 1998. Our appreciation is expressed to the St. Cloud Times for allowing us to reprint this article. ----- Newsletter Editor)

The Idea Book

How do some people continually come up with new projects or carving ideas? Fact is, it's not always easy, but you can bet they have developed a resource system.

Some may utilize the traditional libraries of books, tapes and patterns. But these are costly. This is not to say that one should avoid such systems. They should indeed employ them when possible.

But there is another method, I call it the idea book. It is far cheaper than any other system and it lends itself to more original productions. I have used one for years. And I use it all the time, both day and night. Here's what I did. I purchased an

artist's sketchbook. It measured 6-1/2 by 8-1/2 inches and contained 50 pages of artist drawing paper. It cost less than two dollars.

When I have an idea or thought during the day or at an event, I enter it in the book. Often a rough sketch and a few sentences are all that is necessary. Frequently, you'll be exposed to something that you feel can be improved on, but can't get to it right away. Enter the idea into your book. I even tape small pictures into the book for later references.

Many of my references occur after dark. Just before one goes off to sleep the mind is in high gear. Thoughts are processed by the thousands. Often they are random, but every now and then a good idea or solution to a problem flashes up front. Get up and enter it into the book. Even if the details are sketchy. You have at least saved the idea. You can not wait until morning to do it. You remember only the last few dreams prior to waking. The idea would not be among them.

When you need something special, check through the idea book. Settle on something and refine it. Make better sketches and details. Develop a pattern. Use clay if you need to. Transfer to wood and begin carving. You'll be surprised at how quick the idea book fills and how often you begin to refer to it for new and original materials. Why not give it a try.

Bob Matzke

Wahpeton Weekend: June 26, 27, 28

The Red River Woodcarvers of Fargo sponsor the Wahpeton Carving Weekend every year in June. This is an excellent event for a fun weekend of carving and camaraderie. There are many classes for carvers and some for non-carvers as well. The cost for two nights room (Friday and Saturday) and all meals is \$95 total. This is a good way to spend time learning from other carvers and clubs to see where you'd like to explore different styles of carving. Contact Rueben Brownlee

Bob Pedigo has an announcement which he can show you if you're interested. ----- Bob Pedigo, Newsletter Editor

Calendar of Events

Mar 21, 98 NOTE: NO Meeting. No project is scheduled. No one will be available to open the church.

| | |
|---------------|--|
| Mar 21, 98 | Paint the Walleye Pike with Bob Pedigo and Jack Kline. Bismarck State College, 8 AM - 5 PM. |
| Apr 3,4,5, 98 | Red River Woodcarvers Show, Fargo, ND. Contact Bob Lawrence, |
| Apr 7, 98 | Whittle-In at New Song Church, 7 - 9 PM, Project: Chip Carved Cross by John Opp |
| Apr 18, 98 | Meeting at New Song Church 9 - 11 AM. Project Potpourri by Various Members. These projects will be varied projects from past classes. Any member who has leftover projects from previous meetings, whittle-ins, and classes are invited to bring them to this meeting and should be prepared to assist with any of the selected items. |
| Apr 25,26, 98 | Harold Enlow Weekend Class. Bismarck Arts and Galleries building. 8:30 AM - 5:00 PM. Saturday and Sunday. |
| Apr 27, 98 | Harold Enlow Senior Session. 8:30 AM - 5:00 PM, Burleigh County Senior Center. |
| May 5, 98 | Whittle-In at New Song Church, 7 - 9 PM, Project: Santa Carving by Gordon Dietrich |

| | |
|-----------------------|--|
| Jun 2, 98 | Summer Brown-Bag Whittle Ins Begin. Sertoma Park, Shelter #4. 5:00 PM til ? |
| Jun 26,27,28 98 | Wahpeton Carving Weekend, Contact Reuben Brownlee, |
| Jul 7, 98 | Brown Bag Whittle In, Sertoma Park, Shelter #4, 5:00 PM til ? |
| Jul 17,18,19 98 | Waldorf College Carving Weekend, Contact Joy Boykin, Box 308, Tiltonka, IA 50480 |
| Jul 25, 98 | Black Duck Woodcarving Festival, Black Duck, MN |
| Jul 30 thru Aug 2, 98 | Lake Bronson State Park International Woodcarving Festival, Lake Bronson, MN |
| Aug 4, 98 | Brown Bag Whittle In, Sertoma Park, Shelter #4, 5:00 PM til ? |
| Aug 8,9 98 | Bark Carving Class with Gary Ensign. Registration in May newsletter. |
| Sep 1, 98 | Brown Bag Whittle In, Sertoma Park, Shelter #4, 5:00 PM til ? |
| Oct 8,9, 98 | Tom Wolfe Class, Carving Dogs. Tom's book, "Going to the Dogs", would be a good reference for this class. Registration to be in July newsletter. |
| Oct 10,11, 98 | 29 th Annual Show, Doublewood Inn |
| Oct 9,10, 99 | 30 th Annual Show, Doublewood Inn |
| Oct 7,8 2000 | 31 st Annual Show, Doublewood Inn |

Next Newsletter Deadline: May 5, 1998 at Whittle-In

Sam Lacher

The Bi-Monthly Newsletter of the Flickertail Woodcarvers

Officers and Executive Board

| | |
|-------------------|-----------------|
| President | Gordon Dietrich |
| President-Elect | John Opp |
| Secretary | ----- |
| Treasurer | Meg Burke |
| Membership | Stan Skarpohl |
| Programs | Frank Koch |
| Property | Vince Bitz |
| Librarian | Bob Matzke |
| Member-at-Large | Dan Chaussee |
| Member-at-Large | Greg Bach |
| Newsletter Editor | Bob Pedigo |

| | |
|------------------------|----------------|
| Newsletter Mailing | Mike Senger |
| Newsletter Labels List | Sam Lacher |
| Newsletter Articles | By Our Members |

Whittle-Ins are held the first Tuesday of every month, October through May, 7 - 9 PM. Meetings are held the third Saturday of every month, September through April, 9 - 11 AM. Club Functions are held at New Song Church, 3200, N. 11th St., Bismarck, North Dakota.

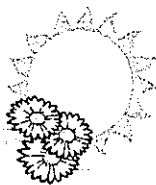
The Curling Chip

May/June 1998

Newsletter of the Flickertail Woodcarvers, Bismarck/Mandan, ND

Summer Schedule Begins

I confess that I get a great deal of satisfaction each time I must announce that our Summer activities schedule is beginning. It's Summer --- time for warm weather and spending time out of doors!



Our woodcarving club is also beginning its out of doors activities for the summer. Beginning in June we will meet the first Tuesday of each month, 5:00 PM until dark, at Sertoma Park, Shelter #4. There are no scheduled projects for these summer meetings. Each person brings their own project to carve, a brown-bag supper if they want, and we meet in fellowship with other wood carvers. Lots of ideas are shared. Lots of information about summer events around the area is discussed.

The weather is usually very pleasant - only once last summer did we get rained out entirely. During one meeting we watched the sky closely because a tornado was spotted north of Bismarck, but those who stayed were happy to report the weather remained marvelous over Sertoma Park.

This is a very relaxing time to visit with other club members. There is always someone available to help with carving questions, problems, and how-to's. The Flickertail Woodcarvers want to encourage old and new members to come, we believe you'll enjoy it. Mark these dates on your calendar now so you don't forget - June 2, July 7, August 4, and September 1. See you there!

Bob Pedigo, Newsletter Editor

Woodcarvers Support of the Seniors Programs

We have a good number of our club who are senior citizens. Our club supports the carving activities of the seniors. We have arranged with the Burleigh County Senior Center to provide a room and time for carving each Thursday afternoon, 1:00 - 3:00 PM. Mickey Tokach has been the primary support person for this group with others filling in during her absence. The club has purchased tools and a sharpener for use by the seniors at the center.

Club members Art Tokach and Cleo Koch support the senior carving in Mandan each Monday afternoon. The club has not been asked to provide any tools or financial support of the Mandan seniors, these seniors are financially self supported.

Each time we have a visiting wood carving instructor come to our area, we try to arrange for a one day session at the Burleigh County Senior Center for our seniors. These classes for seniors are always offered at a reduced rate if possible. This is accomplished because all the travel, meals and incidental costs are not added to the senior costs. These overhead costs are paid by grants or by those taking the regular full length class. For instance, the two-day students for the recent Harold Enlow class each paid \$40 per day (total of \$80) for the class. The club offered the seniors a rate of \$25 for the one-day class.

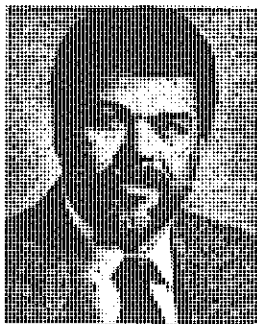
We feel our seniors are valuable members of our club and we are happy they are participating.

Gordon Dietrich, President

Frank Koch Receives Honors

On May 8 Frank Koch received awards for his tireless work in the field of science education.

Frank was selected as the 1998 Bismarck State College Alumnus of the Year and was honored at an awards dinner. Many people had many positive things to say which describes Frank's



dedication to his profession --- teaching others and advancement of science education.

Frank was also selected as one of four regional winners of the Catalyst Award from the Chemical Manufacturers Association. This is an annual award given by a consortium of chemical manufacturers to honor those who excel in their fields. Frank was honored for excellence in teaching and community involvement in promoting chemistry.

Most indicative of Frank's accomplishments were moving tributes from each of his children who recalled vacation trips which always included visits to factories or science museums to learn about things many people never even give a thought.

All of you who know him understand that Frank is also dedicated to woodcarving and woodcarving education. Many of Frank's former students, myself included, have been inspired by his sharing of carving techniques through the classes he continues to teach for our club.

I am pleased to know we have such talent in our club. Congratulations to Frank and of course to his supporting partner, Kay.

Bob Pedigo, Newsletter Editor

Treasurers Duties Change Hands

Bob Matzke has taken over the Treasurer's duties effective May, 98. This is the result of Meg Burke resigning to take a new employment position in California. We wish Meg the best of

luck in this new position and ask her to keep in touch.

Raffle Tickets Available

Raffle tickets for the 1998 Annual Show are available and can be secured from Bob Matzke at the Brown Bag Whittle-ins or by contacting Bob directly. Arrangements can be made to have the tickets mailed, delivered or picked up. This is an important part of our club's financial stability, so please get a book of tickets and sell them. Why not purchase a few for yourself. The prizes are really great this year.

Library News

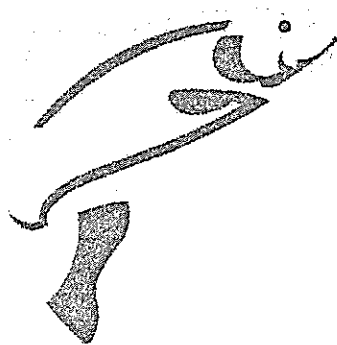
The inventory of books and tapes is just about complete. We need to have all books and tapes returned to Bob Matzke as soon as possible. You can drop them off at the Brown Bag Whittle-ins or contact Bob for other arrangements. Those who are on record of having materials, will be contacted during the summer asking for material returns.

Red River Valley Woodcarvers Annual Show

This year's show was deemed a success by the organization and those attending. Several of the Flickertail Carvers participated this April 4 & 5th. A warm welcome awaited us along with the chance to renew or make friendships. There were rows and rows of great display tables. Advice and tips were given freely. The classes were very well attended with instruction continuing throughout the show for those who needed it. The food was good and door prizes many. Even the weather was favorable this time. The Fargo Club has patterned their show similar to ours, with several extras. They had a support table set up for Big Brother/Big Sister Program. This is something that we might look into. Congratulations on a fine show and we're looking forward to next year.

Carving Your Trophy Fish

Since Summer is here many of us will probably spend some time on the lake fishing. With any luck we'll catch a few nice fish, or will know a neighbor who has a nice



catch. When I see a nice trophy fish I think, "I'd like to carve that some day." Usually Summer is not the best time for me to begin a new carving project and it gets put off until Fall or Winter. But Summer is the best time to begin collecting reference materials for next Winter's carving while the fish is in hand. I frequently find that all the books in the library put together just don't have the correct views, with enough detail, for an accurate reproduction of the fish I want to carve. It is very time consuming to research all the books and magazines for enough of the "right" pictures to do the job.

This article is about taking a series of photos to have next winter when carving your trophy. Your camera should have a lens to allow close-up pictures --- a macro-focus lens is best to record the details accurately. But if you don't have a macro-lens you should use what you do have. Any photos you take will be of help because you'll have something to use as reference. From experience, you'll be far ahead to have something in hand instead of searching the library for the view you need which usually doesn't exist. I frequently end up discouraged when I discover the shot I need just isn't in a book anywhere that I can find.

I believe you should have fourteen views of any fish to be able to represent the species accurately. I usually take a couple shots of each view in case I flinch when the shutter clicks. Two shots of each view times fourteen views finishes a roll of the 35 mm film I use. So for a roll of film and processing, a total cost of about \$10, you can get all the details you need for next winter when you need it the most.

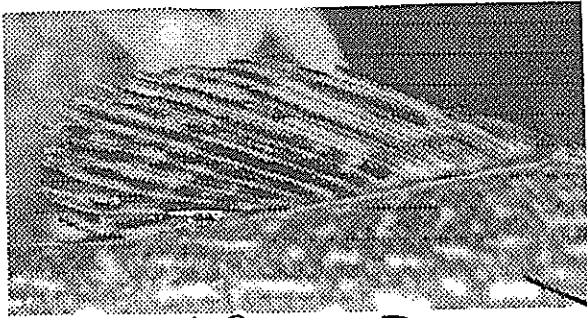
Here are the views I believe you'll need for any species of fish. 1) An overall shot of the fish with a ruler or some object in the frame to get the size of fish for reference. 2) The head profile of the fish from the tip of the snout to just behind the gills. 3) A close-up of the eye. 4) A close-up of the gill area. 5) A view of the underside of the mouth and gill area. 6) A top view of the head. 7) The first dorsal fin. (Northern Pike or Muskie don't have this fin.) 8) Second dorsal or adipose fin for trout or salmon. 9) The caudal or tail fin. 10) The pectoral fin. 11) The pelvic fin. 12) The anal fin. 13) The inside of the mouth. (This is optional for an open mouth fish only. I usually take a photo of this view just to make sure I have it if I need it.) 14) A view of the scale patterns and colors on the side of the fish.

That's pretty much all there is to it. Just remember to get all the views on film. If you are an avid catch and release fisherman, you may want to get only a few views with each fish caught to make sure the fish survives after it is released. You can get a few more shots when you catch the next one. If you're taking your fish home for the freezer, you can get all the shots from one nice fish.

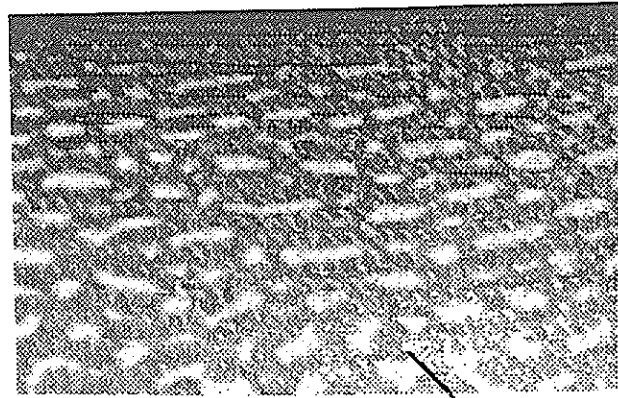
I've shown a sample of a pattern and some actual photos of a Northern Pike on the next few pages which illustrate the photos you should strive for. Unfortunately, even my reference set doesn't quite have all I'm recommending. That gives me a few more pictures to shoot on my next successful fishing trip. Good luck to each of you. I hope to see your reference pictures when our Fall activities start again in September. Maybe we can plan to carve and paint someone's favorite fish from our own references.

Upon review of the following pictures which were reproduced in black and white and about 50% size to fit the newsletter page and budget, you'll be much happier with the color photos you can take. My color reference set is detailed enough to obtain all the details of both fish structure and color.

Bob Pedigo, Newsletter Editor



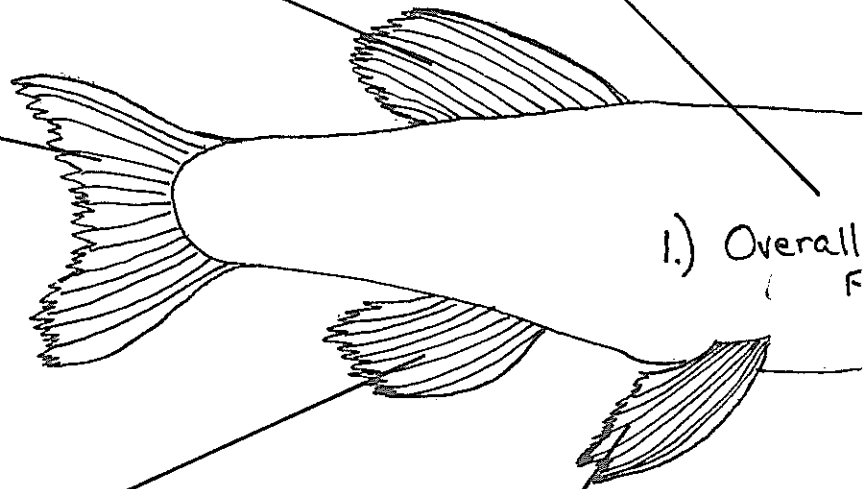
8) Second Dorsal Fin



14) Scale Pattern



9) Caudal Fin

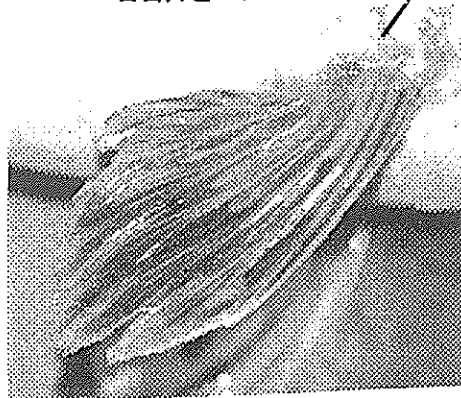


1.) Overall F

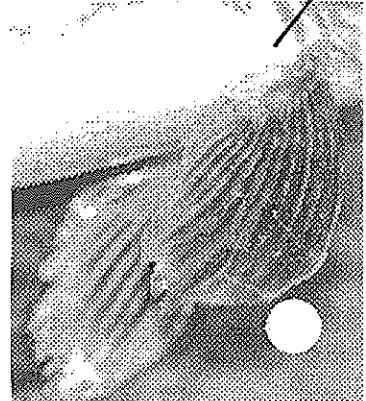
12) Anal Fin



11) PELVIC FIN



10) Pectoral Fin



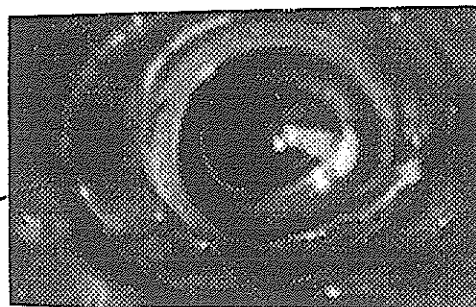
Pattern & Photos
Not Copyrighted.
Use or distribute freely
if you wish. Bob Pedigo
Bismarck, ND

1st Dorsal Fin
not Present on
Northern Pike)



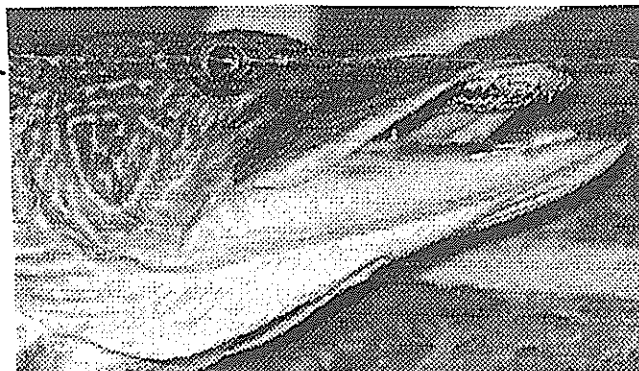
6) Top of Head

3) Close-up
of
Eye

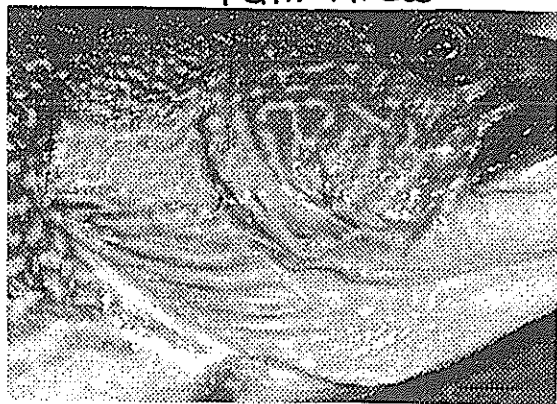


View
is

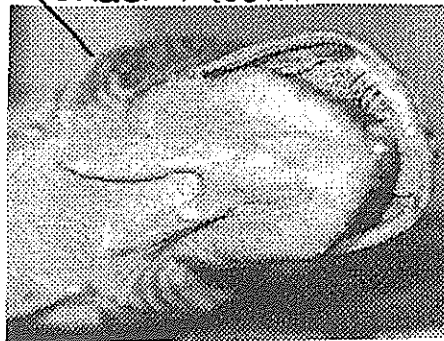
2) Head
& Mouth



4)
Gill Area



5)
Under Mouth



Northern Pike Pattern
& Reference Photos
(Not Pictured - View 13; Inside
of Mouth)

Cottonwood Bark Class Scheduled

Gary Ensign of Miles City, Montana will teach a cottonwood bark carving class on August 8 & 9, 1998. This is a Saturday/Sunday Class which will be two full days 8:30 AM - 5:00 PM. Price is only \$25.00 for the full two day class plus any materials you purchase from Gary. Gary has taught at the Wahpeton Weekend and he always has nice bark for sale, and the students always enjoyed the projects they completed.

This is a wonderful and inexpensive opportunity to learn to carve cottonwood bark from a good instructor. These classes always expose the students to new methods and materials, and to different types of projects which are possible.

Class will be held at Sertoma Park, Shelter #4 all day on Saturday and Sunday, August 8 & 9.

A registration form is included in this newsletter.

Bob Pedigo, Newsletter Editor

"Funny" Fish Contest is Planned for Fall Show

Dear fellow Flickertail carvers,

Back in 1994, Art Tokach challenged the rest of us to carve an "Ugly Bird". About 20 of us came up with very unique ideas. I would like to invite everyone to enter this years event, called the "FUNNY FISH" contest, based on Art's original rules. We all have strange ideas and much carving talent. This gives plenty of time to find funny fish.

FUNNY FISH CONTEST RULES

1. Deadline - October 10, 1998 - NOON - at the club table.
2. Eligibility - Open to any current Flickertail member or participant in the annual show, whether or not he/she is participating in this show.

3. Any species, genus, or fish-like creature [real or imagined] is allowed. But, it must be funny, strange, or humorous in appearance.
4. Size limit --- 12 inches. Larger fish will be discarded.
5. Must be carved of wood and be combustible! Fins, scales, and gills are a requirement.
6. Originality is encouraged. Copies of other carvers patterns are allowed, but value is diminished.
7. Judging will be by guests and participants at this show [one ballot/person over the 2 days]. Fish will be numbered so please sign your fish in a hidden spot for later indictment.
8. Funny fish obtaining most votes in first through third place will receive some, as of yet, unnamed prizes donated by Gen Jansen.
9. Any unclaimed fish as of 5:00 pm on Sunday Oct 11, may turn into kindling.

I am looking forward to a few dozen strange, finny, and funny fish as designed by everyone at this event.

See you in October, and have fun carving!

Gen Jansen

Band Saw Blade Feedback

In a previous newsletter I praised some band saw blades made by Olson Company. These blades were made of thicker, harder steel and outlast any other band saw blade I've ever used.

Since printing that article I've received feedback from two people who tried the blades and haven't had good luck with them. Both of these people have THREE-WHEEL bandsaws. Apparently, the stiffness of the Olson blades aren't a good match for the three wheel bandsaws which have smaller diameter drive wheels inside the saw.

Now I'm modifying my recommendation. Use the Olson blades only on two wheel saws since they don't do as well on the three wheel ones.

Bob Pedigo, Newsletter Editor

Flickertail Woodcarvers Class/Seminar Registration Form

Class: Cottonwood Bark Carving Instructor: Gary Ensign

Dates: August 8 & 9, 1998

Total Class Cost: \$25.00 plus bark fees

Name: _____

Address: _____

City, State, Zip _____

Phone _____

Registration fee of **\$10.00** must accompany registration form to hold your place in the class. Classes are filled on a first paid, first listed basis. Registrations without deposit will not be placed on class roster. If cancellations occur, for any reason, within 30 days of the class start date and your position in the class cannot be refilled, your deposit will not be returned.

Return registration form with deposit to:

Frank Koch

Harold Enlow Tip

Harold Enlow's recent class conducted the last weekend of April at the Bismarck Arts and Galleries Association class room was once again extremely helpful.

One of the tips Harold suggested this year was misting your carvings from a spray bottle with a 50% water, 50% rubbing alcohol mix. This is most helpful on the tough end grain which is often difficult to carve even on the best of wood. Harold believes the water softens the wood fibers and the alcohol allows the water to better penetrate the wood.

I tried this method and I liked it. The carving I selected had quite a bit of end grain exposed and was very hard to carve when dry. After spraying with the mixture, the end grain became more manageable. A word of caution however is to not overdo it. If the wood becomes too wet, the fibers don't cut well, but tend to bend over instead of shave off.

There were questions about how the water would affect your tools --- for instance, wouldn't that tarnish, rust, or dull your tools? I found that the softening of the end grain extended the period between sharpening, I didn't need to sharpen as often. I also haven't noticed any tarnishing or rusting of my tools either. I think this would only happen if your tools were allowed to remain damp when putting them away. The fine mist is only that, enough to mist the carving. There isn't enough water left to leave the tools damp at all.

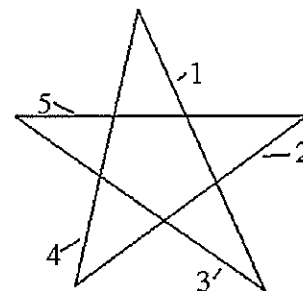
Bob Pedigo, Newsletter Editor

E-Z FIVE POINTED STARS

We all remember how easy it was for our first grade teacher to put a star on our good work. The work we took home to show off. Without raising her pencil from the paper she would draw from 10 o'clock to 2. down to 7. then up to 12, dropping back down to 5. and ending back at 10. It never came out perfect but we never noticed or cared, it was our pride and joy.

Well you can chip carve a 5 pointed star almost as easy. First. with a soft lead pencil, draw a star the way your teacher did. This is for size and placement reference only. For the actual cutting use an X-Acto #19 blade and work on the right side of the drawing and aim your cuts toward the center. Now instead of following her procedure, I've found that it is best to cut the 12 to 5 line first.

With a quick CCW turn, cut the 2 to 7 next. Repeat the turn to cut the 5 to 10 and then on the 7 to 12 cut you should feel the chip "pop"



free. Now finish it with the 10 to 2 cut and check for any fuzzies that may be lurking on the bottom of a cut. This method is faster as you only turn the work once around instead of twice if you follow her drawing with your cuts.

With a little imagination you can see where this star can be altered to be a Star of Bethlehem with it's long legs reaching further down. The American flag with it's fifty stars is now easier with this method even if the flag is waving and some of the stars are altered.

Onto the rounded dome top of a turned box, I chip carved the night sky of the Northern Hemisphere. Using a Star Chart as reference, I placed and included all of the major stars and constellations of the zodiac along with the north star. The person who now has the box uses it to teach the position of the stars to Girl Scouts. With a dim light they can feel the star's position. One young girl with very poor eyesight finally got to "see" the stars through her fingers. And of course the inside of the box contains the rewards for a correct answer in the form of. "Chocolate Stars".

Art Tokach, Chip Carver

Calendar of Events

Jun 2, 98 Summer Brown-Bag Whittle Ins Begin.
Sertoma Park, Shelter #4. 5:00 PM til dark

Jun 26,27,28 98 Wahpeton Carving Weekend, Contact
Reuben Brownlee,

Jul 7, 98 Brown Bag Whittle In, Sertoma Park,
Shelter #4, 5:00 PM til dark

Jul 17,18,19 98 Waldorf College Carving Weekend, Contact
Joy Boykin, Box 308, Titonka, IA 50480

Jul 25, 98 Black Duck Woodcarving Festival, Black
Duck, MN

Jul 30 thru
Aug 2, 98 Lake Bronson State Park International
Woodcarving Festival, Lake Bronson,
MN

Aug 4, 98 Brown Bag Whittle In, Sertoma Park,
Shelter #4, 5:00 PM til dark

Aug 8,9 98 Bark Carving Class with Gary Ensign.
Sertoma Park, Shelter #4, 8:00 AM - 5:00
PM. Registration in May newsletter.

Sep 1, 98 Brown Bag Whittle In, Sertoma Park,
Shelter #4, 5:00 PM til dark

Oct 8,9, 98 Tom Wolfe Class, Carving Dogs. Tom's
book, "Going to the Dogs", would be a good
reference for this class. Registration to be
in July newsletter.

Oct 10,11, 98 29th Annual Show, Doublewood Inn.
Registration to be in July newsletter.

Mar 12,13,14, 99 Lynn Buehling Class, Work Horse pulling a
log.

Oct 9,10, 99 30th Annual Show, Doublewood Inn

Oct 7,8 2000 31st Annual Show, Doublewood Inn

**Next Newsletter Deadline: July 7, 1998 at Brown Bag
Whittle-In**

Sam Lacher

The Bi-Monthly Newsletter of the Flickertail Woodcarvers

Officers and Executive Board

| | |
|-------------------|--------------------|
| President | Gordon Dietrich |
| President-Elect | John Opp |
| Secretary | ----- |
| Treasurer | Bob Matzke |
| Membership | Stan Skarpohl |
| Programs | Frank Koch |
| Property | Vince Bitz |
| Librarian | Bob Matzke |
| Member-at-Large | Dan Chaussee |
| Member-at-Large | George Schamberger |
| Newsletter Editor | Bob Pedigo |

| | |
|------------------------|----------------|
| Newsletter Mailing | Mike Senger |
| Newsletter Labels List | Sam Lacher |
| Newsletter Articles | By Our Members |

Brown Bag Whittle-Ins are held the first Tuesday of every
month, June through September, 5 PM til dark. Sertoma
Park, Shelter #4. Bring a brown-bag supper and your own
project to carve.

The Curling Chip

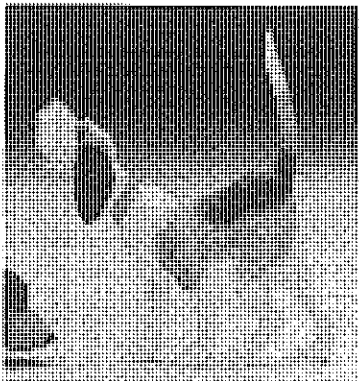
July/August 1998

Newsletter of the Flickertail Woodcarvers, Bismarck/Mandan, ND

Tom Wolfe Classes Offered in October!!!

Registration for two classes taught by wood carver and author Tom Wolfe is in this newsletter.

Tom will be teaching a two full day class on October 8 and 9, just prior to our annual show. This two day class will be carving dog caricatures which Tom does so well. Tom feels that some carvers will be able to fully complete one dog in a day, so he will have extra cutouts available for a different dog project the second day. Cost for the two day class is \$95.00 plus the cost for cutouts. Tom's book, "Tom Wolfe Goes To The Dogs: Carving Dogs", would be an excellent reference for this class. The photo above is one of the dogs pictured in Tom's book.



Tom will also be teaching a two morning class on Saturday and Sunday mornings of our show, October 10 and 11. This class will be a head stick. Tom says the head stick is a roughout containing three separate heads, a cowboy, a civil war soldier, and a bartender/caricature. You should be able to complete one of the three heads in the two morning sessions. The stick is 12" in length, so each head is 4" high. Tom says one student carved a civil war soldier head in his class, then carved the body on his own resulting in a full civil war soldier about 20" tall. Tom will have patterns for the bodies of the characters on

the head stick for those who want them. Cost for this class is \$35.00 plus \$20.00 for the roughout.

If you're interested in either one of these classes, taught by a nationally known instructor, you should sign up right away without delay. We've already had several inquiries from people who wanted to register and pay immediately. Club policy is to let everyone have a fair chance by only allowing registration following the newsletter announcement of the class. Don't miss these class offerings by waiting too long!

Bob Pedigo, Newsletter Editor

Move of Club Equipment

The administration of New Song Church advised that remodeling efforts at the church necessitated relocating our equipment, library, and records from the church for the summer. I also later learned they needed the space for summer religious instructions. We may return the above in late August.

We were able to obtain Park Board approval to store our equipment where we used to meet in the War Memorial Building. Our club property will remain there over the summer.

Leonard Larshus and Herb Thurn provided their pick-up trucks and strong backs to assist with the equipment move. I want to thank Leonard and Herb for their help. Thank you.

Gordon Dietrich, President

*** It takes less time to do a thing right than it does to explain why you did it wrong. ***

Tips From a Chip Carver

Making a template from X-ray film has several advantages.

1. When a design must be repeated several times per project it saves time and ensures accuracy.
2. It is durable and will not easily wear down the edges after repeated uses as card of poster board usually does.
3. Because of it's flexibility it will easily conform to most surfaces, flat or round, concave or convex.
4. It is transparent. Any defect in the wood can be easily seen and avoided. It's blue color makes it easier to see than a clear plastic in the clutter of a work bench top.
5. Inside cuts can be easily done using a #2 X-Acto blade and a plastic cutting board. A pair of shears are best for outside cuts.
6. Use a Sanford "Sharpie" with an ultra-fine tip to draw a permanent line on the film. Trace or draw directly onto the film.
7. Cut on the line so when it is used the pencil line will be in the waste part of the chip, making final clean-up easier (no erasing).
8. Use a push pin to punch a clean hole the size of a 0.5 mm pencil for locating centers and other permanent marks. With a sharp knife remove the extruded plastic from the back side to ensure smooth action with no catches.
9. The price is right. It can usually be gotten free from most large X-ray labs that recover the silver from film. A small gift of a chip carved ornament will ensure many return visits.

Many of the templates chip carvers make are of the internal type. Here are some tips for making your own collection.

On a design you wish to be of equal size and shape cut only one side or half of the templates and flip it to get the other half. i.e. Tulip design or fleur-de-lis.

On fan type designs cut alternate spaces to preserve the integrity of the template, as the edge of

one chip becomes the edge of the second chip. Careful planning is vital.

Always mark on the template where the design was taken from for future reference. i.e. Pg 28 - 29, Barton's second book, Swiss Lace.

To avoid later confusion mark a written "R" for the correct side to use.

Art Tokach, Chip Carver

(Most all the tips above can also be used by people who don't do chip carving. I like the one where the template is flexible for objects which are not flat. Good for figure and animal carvers too! --- Newsletter Editor.)

Summer Brown-Bag Whittle-In's

Once again the executive board has provided for the brown-bag whittle-in's. Summer in North Dakota is hot. Meeting in our regular meeting place, which is not air conditioned, would be extremely uncomfortable.

We had our first Brown-Bag Whittle-In at Sertoma Park, Shelter #4 on June 2. The temperature that day was only 52 degrees. The number of people who attended that day was small -- only the most hardy attended.

However on July 7, the climate could not have been better. Temperature was about 80 degrees with a gentle breeze, skies were clear, and about ten carvers attended this Whittle-In. We ate our supper, carved, and discussed upcoming club business as well as past carving events. Those who attended the recent Wahpeton Carving weekend updated those in attendance at the Whittle-In on Wahpeton happenings.

Our next Brown-Bag Whittle-In is on August 4. I promise you moderate temperatures, clear skies and a gentle breeze. If possible you should plan to come to one of the summer Whittle-In's. Those who do attend enjoy this very much.

Gordon Dietrich, President

29th Annual Flickertail Woodcarving Show

AGENDA

October 10 & 11, 1998

Doublewood Inn (Exit 160 & I-94)

Bismarck, ND

The Flickertail Woodcarving Club is pleased to have you participate in a fun filled weekend of learning, sharing and camaraderie.

AGENDA:

Friday: Setup: 6:30 - 9:00 pm

Saturday: Setup: 7:30 - 11:00 am

Workshops: 8:00 - 11:15 am

Brunch: 11:15 am - noon: Senate Room

Exhibits: open to the public, noon - 5:30 pm

Social Hour: 5:30 - 6:30 pm Senate Room

Banquet: 6:30 Senate Room (Doublewood Inn)

Exchange of carvings and doorprizes

Sunday: Workshops: 8:00 - 11:15 AM

Brunch: 11:15 am - noon Senate Room

Exhibits: open to the public, noon - 4:30 pm

Drawing for raffle prizes and winner of Ugly fish contest

NOTE: All meal costs are included in registration fee.

In order to receive the use of the Doublewood Inn at no cost, we have agreed to have the woodcarvers eat their meals at the Doublewood Inn. Therefore, we have set the registration fee at \$30 (tax & gratuity included) to cover the cost of the Saturday and Sunday brunches and Saturday evening banquet. We will be serving coffee and donuts Saturday and Sunday morning. Early departures are discouraged unless prearranged. A block of rooms has been set aside for the carvers at special rate of \$46.00 for single and \$50.00 for double rooms. Children stay free. The phone number at the Doublewood Inn is

For additional information contact Frank Koch

29th Annual Flickertail Woodcarving Show

REGISTRATION

October 10 & 11, 1998

Doublewood Inn (Exit 160 & I-94)

Bismarck, ND

Name _____ Phone _____
Street _____ City _____
State _____ Zip _____

Please complete the following by writing the amount in the events you plan to participate in. Note that the class size is limited to 12 and the workshops are filled in order of registration date. Show participants are given priority over nonparticipants.

| | | | |
|--------------------------|---------------|---------|-------|
| Tom Wolfe (Head stick) | Sat.& Sun. AM | \$35.00 | _____ |
| Gary Paulson (Troll) | Sat. AM only | \$10.00 | _____ |
| Rick Jensen (Santa Pin) | Sun. AM only | \$10.00 | _____ |
| Marge Bitz (Craft items) | Sat.. AM | \$ 8.00 | _____ |
| Marge Bitz (Craft items) | Sun. AM | \$ 8.00 | _____ |

Material fees are to be paid to the instructor.

Basic registration fee:

| | | |
|----------------------------|---------|-------|
| Participating carver | \$30.00 | _____ |
| Noncarving spouse | \$25.00 | _____ |
| Extra Table (if available) | \$ 5.00 | _____ |

TOTAL

Electricity will be available at center of exhibit area, please bring an extension cord if you need electricity.

PLEASE BRING A DROP CLOTH TO CARVE OVER

This carving show will allow you to sell your carvings at the show if you wish. State law requires that you collect sales tax.

I plan to participate in the carving exchange Saturday eve. Yes ___ No ___

I plan to participate in the Ugly fish carving contest Yes ___ No ___

Return the completed registration form with a check by September 25, to Frank Koch,

Flickertail Woodcarvers Class/Seminar Registration Form

Class: Carving Dog Caricatures Instructor: Tom Wolfe

Dates: October 8 & 9, 1998

Total Class Cost: \$95.00 plus cutout costs

Name: _____

Address: _____

City, State, Zip _____

Phone _____

Registration fee of **\$30.00** must accompany registration form to hold your place in the class. Classes are filled on a first paid, first reserved basis. Registrations without deposit will not be placed on class roster. If cancellations occur, for any reason, within 30 days of the class start date and your position in the class cannot be filled, your deposit will not be returned. Only if your position in the class is filled by another carver, will your full deposit will be returned.

Return registration form with deposit to:

Frank Koch

Annual Show Plans, October 10, 11, 1998

The Flickertail Woodcarvers annual show, sale, and classes will be held on Saturday and Sunday, October 10 and 11, 1998. This year we believe we are again offering the highest quality instruction along with the most reasonable prices. Registration costs of \$30 for the exhibitor and \$25 for non-exhibiting spouse include meals for Saturday noon brunch, Saturday evening banquet, and Sunday noon brunch.

The Dakota Woodturners are to be back again for the second year. The wood turnings displayed last year were very well done and received many favorable comments from show guests. We hope more wood turners will exhibit at the show this year.

Tom Wolfe will be our featured carver this year. Tom is a nationally known caricature carver and author of many books about wood carving. Tom will be teaching a two morning class on Saturday and Sunday on carving heads. Tom has a head stick roughout which is 12" tall and contains three heads; a cowboy, a civil war soldier, and a bartender/caricature. At least one of the heads should be completed in the two mornings. Tom will have available patterns for the body of the figure to allow the student to finish a completed 20" figure, using the head from the class, on their own. Cost of this class will be \$35 plus \$20 for the head stick roughout.

Gary Paulsen of Fargo will be teaching a class on troll carving this year on Saturday morning only. Gary is offering a choice of two different trolls this year. Those who have carved one of Gary's trolls have thoroughly enjoyed his class. Cost for this class is \$10 plus the cost for the cutout.

Rick Jensen of Crookston, MN will be back this year carving a Santa on Sunday morning only. All our members enjoy Rick's classes. Rick may even have a funny story or joke to share with his class. Cost for this class is \$10 plus the cost for the cutout.

Marge Bitz will return this year to offer craft classes for the non-carvers. Marge will do patchwork ornaments on Saturday morning and a rose made of money on Sunday morning. Cost will be \$8 per day (\$16 for both days). For the patchwork ornament class, bring 6 styrofoam balls,

2" to 3" diameter, scrap material (prints or Christmas colors work well), pinking shears, and an old metal fingernail file. For the money rose class, bring five crisp, new one dollar bills for each rose you want to make. Bills must be crisp and new, old ones won't work. Marge will have materials for sale at the show for those who don't bring their own.

This year we will be having a "Funny Fish" contest. The funniest fish, as judged by the show attendees will be awarded a prize by Gen Jansen. We hope to see many new ideas for funny fish this year. At one show we had an "Ugly Bird" contest and everyone enjoyed the humorous entries.

We will continue our tradition of a carving exchange and expand that to include any wood turner who wishes to participate in the gift exchange. At the Saturday evening banquet each person who donates a gift to be presented to another will receive a gift from another carver/turner to take home with them. This is a nice way to receive some very nice carvings or turnings for your personal collection.

Bob Pedigo, Newsletter Editor

Play Ball!

The baseball scene being carved by Frank Koch and other club members is nearing completion. The figures which are completed are looking like a closely-knit team of caricature players which are having fun, although some of them aren't paying much attention to the ball game.

Frank's injured carving thumb has slowed his progress somewhat. However, other members have volunteered to carve additional figures to complete the team.

Tom Wolfe has agreed to carve a dog catching a frisbee or a ball in the outfield. This will be a nice addition to the scene.

There is still time to carve a figure or two if you'd like to help out. We could use your help to complete the team and onlookers. If you would carve a figure contact Frank Koch at

who would advise you on items which can be used.

Bob Pedigo, Newsletter Editor

Calendar of Events

| | |
|--------------------------|---|
| Jul 25, 98 | Black Duck Woodcarving Festival, Black Duck, MN |
| Jul 30 thru Aug 2, 98 | Lake Bronson State Park International Woodcarving Festival, Lake Bronson, MN |
| Aug 4, 98 | Brown Bag Whittle In, Sertoma Park, Shelter #4, 5:00 PM til dark |
| Aug 8,9 98 | Bark Carving Class with Gary Ensign. Sertoma Park, Shelter #4, 8:00 AM - 5:00 PM. Class is now full, you may still register as an alternate in case of cancellations. |
| Sep 1, 98 | Brown Bag Whittle In, Sertoma Park, Shelter #4, 5:00 PM til dark |
| Sep 19, 98 | Regular meeting at New Song Church, 9:00 - 11:00 AM. Project: Miniature Rocking Horse by Bob Pedigo. Cutouts of various types of woods will be available. This will be the first of a two meeting project as discussed in a club meeting last spring. |
| Oct 6, 98 | Whittle-In at New Song Church, 7:00 - 9:00 PM. Project: Finish the miniature rocking horses started in the September 19 meeting, led by Bob Pedigo. |
| Oct 8,9, 98 | Tom Wolfe Class, Carving Dogs. Tom's book, "Going to the Dogs", would be a good reference for this class. Registration in this newsletter. |

| | |
|------------------|---|
| Oct 10,11, 98 | 29 th Annual Show, Doublewood Inn. Registration in this newsletter. |
| Oct 17, 98 | Meeting at New Song Church, 9:00 - 11:00 AM. Project leader and/or ideas needed. |
| Nov 3, 98 | Whittle-In at New Song Church, 7:00 - 9:00 PM. Project leader and/or ideas needed. |
| Nov 21, 98 | Meeting at New Song Church, 9:00 - 11:00 AM. Project: Chip-carved Christmas ornaments by Art Tokach. |
| Dec 1, 98 | Whittle-In at New Song Church, 7:00 - 9:00 PM. Project: Christmas Ornaments by Frank Koch |
| Dec 19, 98 | Christmas Meeting at New Song Church. No project. Bring goodies to share and a carving for Christmas gift exchange. Bring a gift/take a different one home. |
| Mar 12,13,14, 99 | Lynn Buehling Class, Work Horse pulling a log. |
| Oct 9,10, 99 | 30 th Annual Show, Doublewood Inn |
| Oct 7,8 2000 | 31 st Annual Show, Doublewood Inn |

Next Newsletter Deadline: September 1, 1998 at Brown Bag Whittle-In

Sam Lacher

The Bi-Monthly Newsletter of the Flickertail Woodcarvers

Officers and Executive Board

| | |
|-------------------|--------------------|
| President | Gordon Dietrich |
| President-Elect | John Opp |
| Secretary | ----- |
| Treasurer | Bob Matzke |
| Membership | Stan Skarpohl |
| Programs | Frank Koch |
| Property | Vince Bitz |
| Librarian | Bob Matzke |
| Member-at-Large | Dan Chaussee |
| Member-at-Large | George Schamberger |
| Newsletter Editor | Bob Pedigo |

| | |
|------------------------|----------------|
| Newsletter Mailing | Mike Senger |
| Newsletter Labels List | Sam Lacher |
| Newsletter Articles | By Our Members |

Brown Bag Whittle-Ins are held the first Tuesday of every month, June through September, 5 PM til dark. Sertoma Park, Shelter #4. Bring a brown-bag supper and your own project to carve.

The Curling Chip

^{OCT}
September/August 1998

Newsletter of the Flickertail Woodcarvers, Bismarck/Mandan, ND

Message From the President

I hope all of our members are as excited about the upcoming annual show as myself.

This show highlights many of our activities that were announced during the year. Tom Wolfe will teach a class on carving dogs two days just prior to our show. He also will be teaching a class for the two mornings of our show, carving heads. Gary Paulson will teach a Saturday morning class on a troll and Rick Jensen will teach a Sunday morning class on a Santa.

We'll also have raffle tickets to sell and the raffle drawing on Sunday afternoon. Don't forget the funny fish contest with winners receiving prizes donated by Gen Jansen. Then we have our Saturday evening banquet which is a fun time. If I have you confused, please ask one of the club officers. Their names are listed on the back of the newsletter.

Gordon Dietrich, President

Wahpeton Weekend a Success

Our annual visit to Wahpeton for the Wahpeton Carving Weekend, was held June 26 - 28. It was a very good carving weekend and many of our local members attended.

Many of the Wahpeton instructors are members of the Flickertail Woodcarvers. Local members, Art and Mickey Tokach, taught a class on Chip Carving, and Frank Koch taught a class on baseball caricature figures. Other Flickertail members who taught at Wahpeton this year are Gen Jansen, Rick Jensen, Bob Gow, Larry Longtine, and Bob Lawrence. John Krantz, also a member was there to sell wood. We are fortunate to have many fine carvers in our club. I

hope we can get these talented members to teach local classes to our club this fall and winter. I will encourage the executive committee to schedule some special classes and am certain the classes will fill with eager students. I encourage your support to have successful club activities.

Gordon Dietrich, President

Nominations for Club Officers Solicited

Our annual elections are in February 1999. We will elect a new treasurer, program chairperson, property chairperson, and one member-at large. We would also like to nominate a secretary since our former secretary declined a nomination last year. The secretarial duties have been filled in by Bob Pedigo in the interim.

We'd like your assistance in filling any one of these positions. If you'd like to be considered for a position, please call me. A nominating committee also will be appointed and will be talking with members to see if you're interested. Please consider a position when asked.

Gordon Dietrich, President

Senior Center Carving to Begin October 1

The senior carving sessions are scheduled to begin on October 1, 1998 and are held at the Burleigh County Senior Center each Thursday afternoon from 1:00 - 3:00 PM. Mickey Tokach will lead the sessions.

Christmas Ornaments Due at Annual Show

Our club is supporting ornaments for two trees this year. One of our principle raffle prizes is a Christmas tree filled with hand carved ornaments donated by club members. Another tree filled with ornaments will be donated to Bismarck Art and Galleries Association (BAGA) for their fund raising activities. This is because of all the low cost or no cost support BAGA provides our club by allowing use of their facility for woodcarving classes.

Needless to say, we'd like to fill both trees with more ornaments than we did last year. If you have an ornament to donate for the club raffle tree or the BAGA tree, they need to be brought to the annual show. Ornaments should be brought and displayed on the trees as soon as possible on Saturday or Sunday so they can be viewed and photographed prior to the raffle drawing. We sincerely appreciate your support.

Raffle Ticket Sales Progress

There have been very few raffle tickets requested this year and even fewer sold. To date the Treasurer has put \$135.00 into the bank under raffle tickets. Carvers, we have only one month left. The moneys from the tickets helps the club to sponsor carving classes for the coming year. These classes are costly. We need you to contact Bob Matzke for tickets. See how many you can sell, or buy some for yourself. The prizes are really nice again this year. Bob's telephone number is Call him and he can mail you a pack or two of tickets. We really need your help.

Beginners Classes to Begin October 13

Frank Koch will be teaching a beginners carving class on Tuesday evenings, 7 - 9 PM,

beginning October 13. Contact Frank for information.

Woodcarving Classes Taught at North Dakota Outdoor Woman Event

On August 15, 1998 Bob Matzke was requested to instruct carving for 24 women at the ND Game & Fish Department's "Becoming an Outdoor Woman" program. The event was held at Lake Metigoshe State Park Headquarters in the Turtle Mountains. Bob's project was a small stylized coyote - the one he's instructed on before for the club. Bob was a little apprehensive at first with almost 150 women running around. He was clearly a minority. However the fears he may have had were dismissed by the eagerness of those assigned to his two classes. The classes were held in a meadow park under an open canopy circus style tent. Most of the carvers were first timers. They each received a rough-out and a lesson plan. They were given two tools. A bench knife and small palm gouge. Every carver finished a coyote. Safety was stressed, but still a few got in a hurry and ended up with skin nicks. Nothing that a band-aid couldn't fix. Bob was impressed with the final carvings. For first timers, the coyotes were really pretty good. The women were pleased with their efforts. Bob says he had as much fun as the carvers. The food was good. Opportunities to sample a wide variety of wild game was available. There was a mystery meat prepared in sweet & sour style which was really good. It turned out to be porcupine. Even then it was still good. Bob also attended a special presentation by Brad Pozarnsky - Famous ND Musher - 1998 Iditarod which was very interesting. The carving classes were an overwhelming success. Bob was requested to return by the majority of carvers. Bob congratulates those who took part in the program and especially those in his carving classes. They did well.

Bob Matzke - Treasurer and Librarian

Watch for Annual Show Information on Local Television Stations

Frank Koch will be appearing on television to promote our annual show in early October. He plans to invite our featured carver, Tom Wolfe, to appear with him. In the past our show has been featured, along with some representative carvings done by our members. If you have something special you think would be good to promote our club, bring it to the Whittle-In On Tuesday, October 6. We ask that you bring only carvings capable of being carried into the TV studio along with other people's work. Large carvings could not be handled easily and probably wouldn't be shown.

Also, if you have any Christmas ornaments ready for the ornament tree, you may also bring those to the October 6 Whittle-In. Frank plans to display a few ornaments on a small artificial tree while on television.

Frank is scheduled to appear on KXMB, Channel 12 (Channel 11 Cable), during the noon show on Thursday, October 8.

He will also appear on KFYZ, Channel 5 (Channel 7 Cable), during the noon show on Friday, October 9.

Items for Sale

- Flickertail Woodcarvers Club Vests. Large and Medium sizes available. These are nice to wear to show your affiliation at the annual show. Price is \$18.00 each. See or call any executive board member if interested.
- 60" X 34" workbench with vice. Also shoplights. Call Ralph LaFontaine

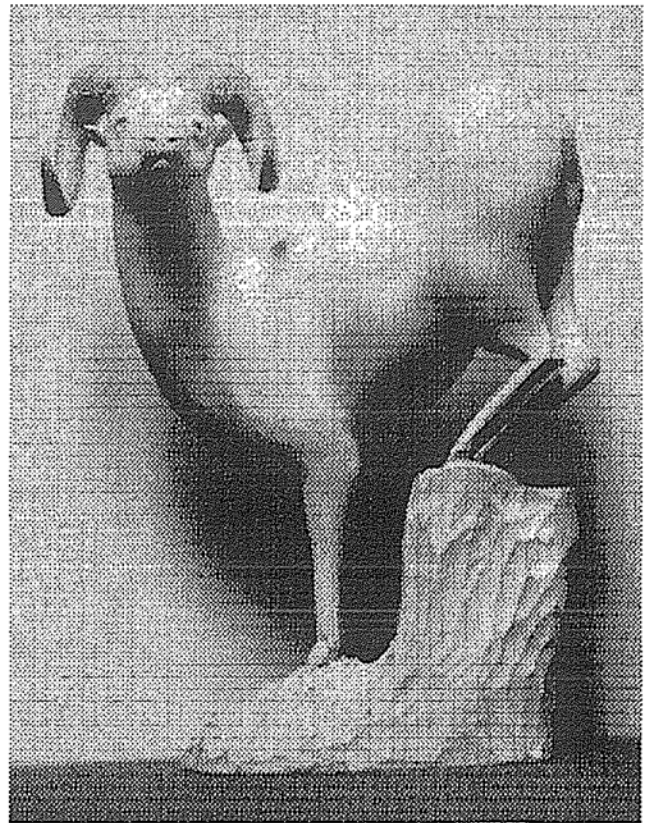
Obituary

Orma Swanick of Mandan passed away on August 17. Orma was a charter member of Flickertail Woodcarvers. She is survived by her husband Jim, who also is a charter member of Flickertail Woodcarvers. We express our sincere condolences to Jim, and to their family and friends.

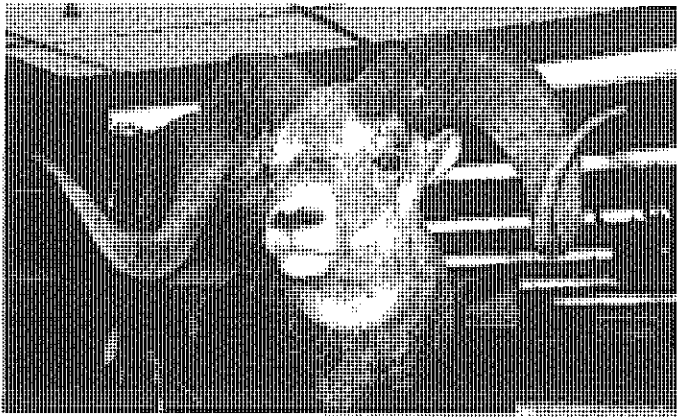
Bighorn Sheep Reference Photos

I completed a carving of a Bighorn Sheep to be offered as one of this years raffle prizes. This carving is done from a roughout I purchased from Gary Larsen at Wahpeton two years ago. I had this roughout in my work positioner for nearly two years and every time I sharpened a tool I cut a chip off, with the ultimate goal being a finished sheep. That way no effort was "wasted". That's a good subject for another article.

Anyway, as the carving was nearing the final stages I was unable to find enough good reference photos to finish the carving. The Wild Things Gallery in Kirkwood Mall has a pretty fair stuffed Bighorn on display, so I took my camera one winter afternoon and headed for the mall. The photos which follow are the result of that trip.



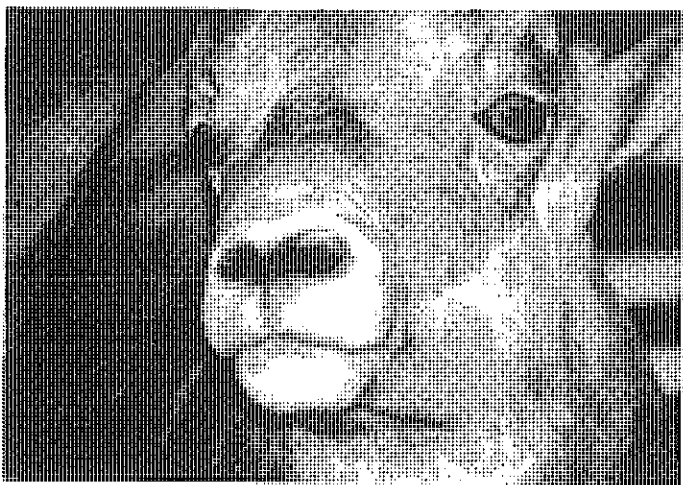
This is a view of the completed Bighorn Sheep carving, not yet painted.



This is a frontal view of the stuffed sheep head and horns.

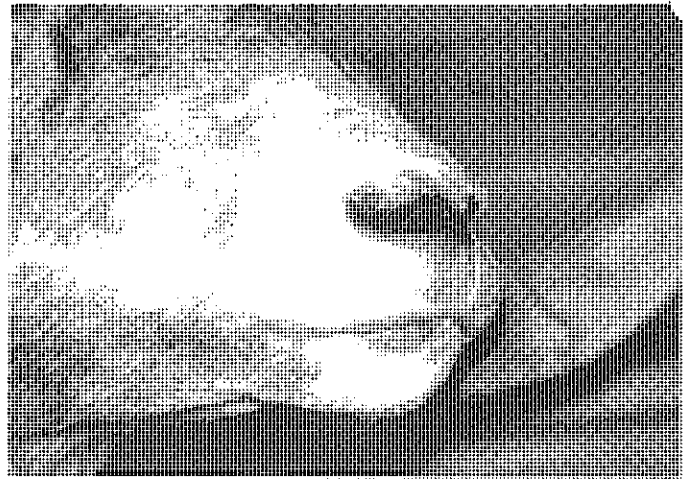


This is the profile view of the stuffed sheep head.



This is a closer view of the nose and mouth area of the stuffed sheep. You can also observe the mound of the eye socket and the oval, not round, eye pupil. Also observe the eyes are on the side of the head,

not the front, but they are slightly angled toward the front of the head for seeing forward. Only a slight turn of the head allows looking rearward.



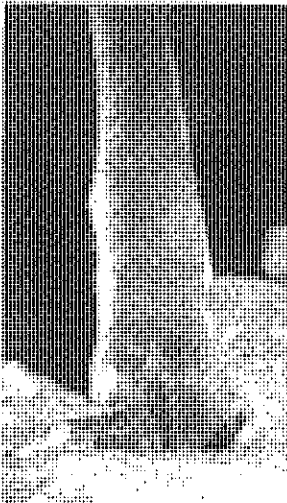
And this is a side view of the stuffed sheep nose and mouth area.



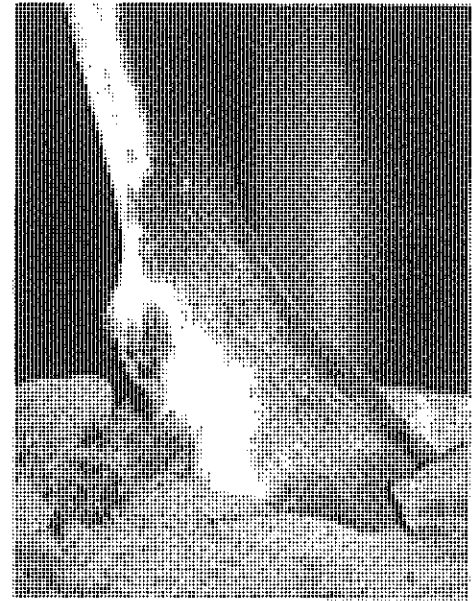
This is the rear of the sheep showing the profile of the rear and the hind leg muscles and attachment to the torso.



This view shows front legs attaching to torso and muscle structure of front legs.



This is a front view of a hoof.



This is a side view of the same hoof.

I hope these photos will be useful to someone who wishes to carve a Bighorn Sheep. I know at least one carver who had plans to start their own sheep carving. If you use these photos and they are helpful to you, please let me know. Use of any material I submit as an article or reference for this newsletter is free and you may give photocopies to your friends. The only thing I ask is that you tell me if they are detailed enough for you to do a good job. If not, I'll take additional views of the next reference subject for future newsletters.

If you carve a Bighorn Sheep using these pictures, I'd also ask that you send a photo of the finished carving or an article about the process for publishing in a future newsletter. You may also know of a good published source for reference photos of wildlife. If you do, I think other members would like to hear of it, so send the information in and it can be added to a future newsletter.

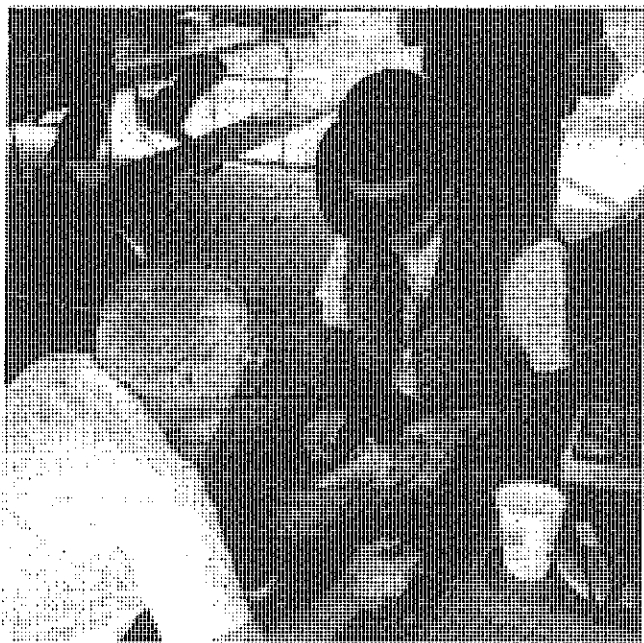
Bob Pedigo, Newsletter Editor

Show Registration

Our show registration numbers are down as compared to last year. If you've forgotten to register, now is the time to do so. There are still openings in all classes. See the July newsletter for registration information.

Bark Carving Stories

On August 8/9, 1998, ten carvers attended a bark carving class instructed by Gary Ensign of Miles City, Montana. Instruction covered selection of bark, carving of faces and buildings, and finishing. The resulting carvings consisted of western, frontier, Indian and wood spirit faces.



There were a number of very good castles. Ensign stressed that the carver strive for originality. They must also have fun. It was obvious that this was accomplished. Everyone enjoyed the class and learned more about bark carving. The class was held in Sertoma Park, shelter #4, under ideal weather conditions.

A new and innovative use for Super Glue was demonstrated by Clara Yonker at the Ensign Bark Carving Class. We're all aware of the normal uses for the product, but Clara's approach was an eye opener "Thumb Ornaments". She glued the tube to her thumb. Was it an attention getter? You bet! However, Clara found carving to be somewhat difficult. She had to drive home for nail polish remover to get the tube off. The jury's still out on this. Will it be a treasured practice or fade? Through it all Clara was a good sport about the joking. Thanks Clara for a good story.

Bob Matzke

"Funny" Fish Contest is Planned for Fall Show

This is a reprint of an article from our May/June 98 newsletter. It is reprinted here to remind everyone of the funny fish contest and to reprint the contest rules.

Dear fellow Flickertail carvers,

Back in 1994, Art Tokach challenged the rest of us to carve an "Ugly Bird". About 20 of us came up with very unique ideas. I would like to invite everyone to enter this years event, called the "FUNNY FISH" contest, based on Art's original rules. We all have strange ideas and much carving talent. This gives plenty of time to find funny fish.

FUNNY FISH CONTEST RULES

1. Deadline - October 10, 1998 - NOON - at the club table.
2. Eligibility - Open to any current Flickertail member or participant in the annual show, whether or not he/she is participating in this show.
3. Any species, genus, or fish-like creature [real or imagined] is allowed. But, it must be funny, strange, or humorous in appearance.
4. Size limit --- 12 inches. Larger fish will be discarded.
5. Must be carved of wood and be combustible! Fins, scales, and gills are a requirement.
6. Originality is encouraged. Copies of other carvers patterns are allowed, but value is diminished.
7. Judging will be by guests and participants at this show [one ballot/person over the 2 days]. Fish will be numbered so please sign your fish in a hidden spot for later indictment.
8. Funny fish obtaining most votes in first through third place will receive some, as of yet, unnamed prizes donated by Gen Jansen.
9. Any unclaimed fish as of 5:00 pm on Sunday Oct 11, may turn into kindling.

I am looking forward to a few dozen strange, finny, and funny fish as designed by everyone at this event.

See you in October, and have fun carving!

Gen Jansen

Making a Multiple Quadrant Marker From X-Ray Film

Many times a chip carver must divide a circle into equal spaces for a design. This device uses only a quarter of the circle and is repeated for each of the other three quarters.

Use a 3" X 8-1/2" piece of old X-ray film. (1) Mark the center and draw a baseline 1/4" from the bottom edge. (2) In the upper left and right corners make a center mark 1/4" from each edge. (3) From the center intersection draw a 2" radius and a 2-1/2" radius semi-circle. (4) Draw the same radius quarter circles from each of the corner center marks from step (2).

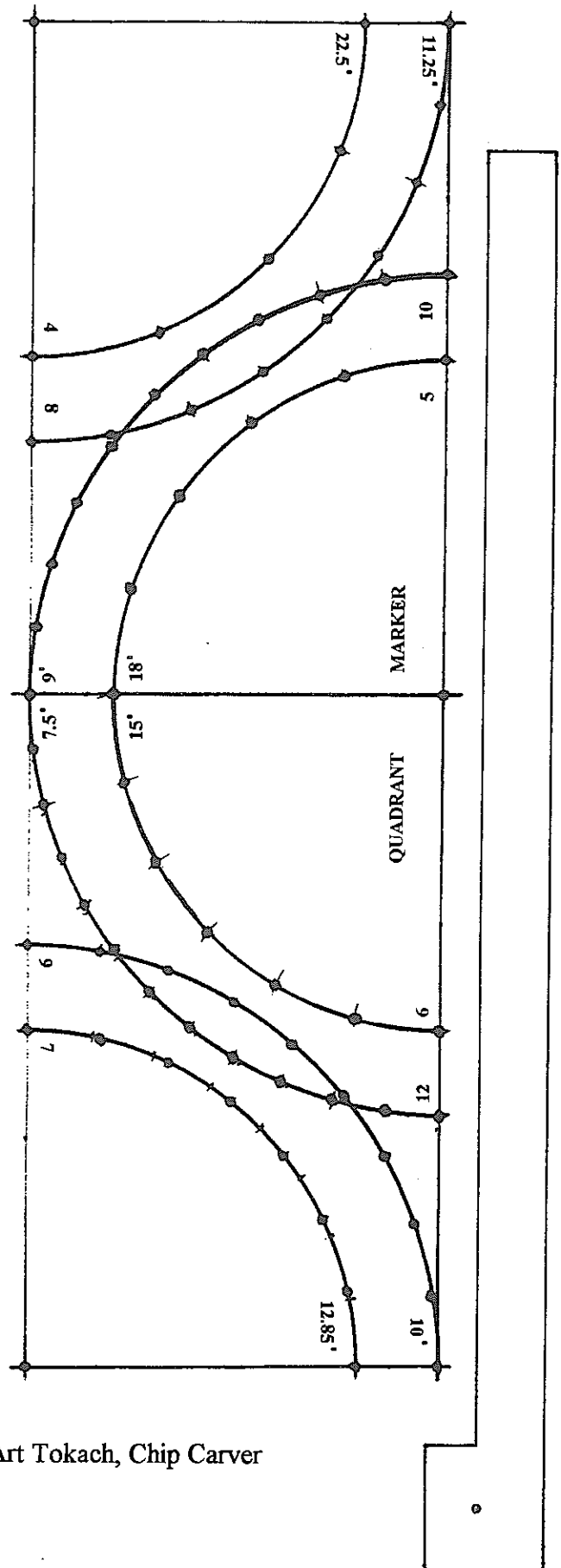
You will note that I have combined the 4 & 8, the 5 & 10, and the 6 and 12 together because one is the multiple of the other. The 7 & 9 of course are not multiples but are grouped together here for convenience. Larger numbers of divisions tend to become confusing as the center chips become very small. This template is good for constructing 16 to 48 spaces on a circle.

Use a good quality protractor to make the degree marks. Double check by walking a divider through the marks. Because we are dividing a quarter circle into equal parts each number is divided into 90 degrees. Example: 4 into 90 = 22.5, 8 into 90 = 11.25, 5 into 90 = 18, 10 into 90 = 9, 6 into 90 = 15, 12 into 90 = 7.5, 7 into 90 = 12.85, and 9 into 90 = 10.

Mark division numbers and degrees on each circle end for future reference. Another method is to find the chord of the arc and step off these measurements for each number of spaces. A reference article about chords of arc can be found in the March/April issue of our newsletter. The easiest method is to lay your X-ray film over the photo copy and punch the holes and markings.

To use the template, first divide the circle area of your carving project into four quarters. Place the appropriate quadrant over these lines. Use the circle maker as a straight edge and place a push pin through the center hole. Extend each line out to the outer edge. Or you can make a pencil mark through each hole and then extend with the circle maker or a straight edge.

The circle maker is easily made from a 3/4" X 8-1/2" piece of X-ray film. Draw a line 1/4" from one end. With a pair of shears cut along the line to within 1/4" from hole and remove this portion. Edge can be used as a straight edge or a hole can be punched at any place along the line and a 0.5 mm pencil used to cast larger circles. Remove the extruded plastic caused from poking a sharp object from the back side of the template. This will prevent any catches during use and to insure smooth operation.



Art Tokach, Chip Carver

Calendar of Events

| | |
|---------------|---|
| Sep 19, 98 | Regular meeting at New Song Church, 9:00 - 11:00 AM. Project: Miniature Rocking Horse by Bob Pedigo. Cutouts of various types of woods will be available. This will be the first of a two meeting project as discussed in a club meeting last spring. |
| Oct 1, 98 | Senior Carving at Burleigh County Senior Center begins. Continues throughout fall, winter and spring months every Thursday, 1:00 - 3:00 PM. Contact Mickey Tokach, |
| Oct 6, 98 | Whittle-In at New Song Church, 7:00 - 9:00 PM. Project: Finish the miniature rocking horses started in the September 19 meeting, led by Bob Pedigo. |
| Oct 8,9, 98 | Tom Wolfe Class, Carving Dogs. Tom's book, "Going to the Dogs", would be a good reference for this class. Registration in this newsletter. |
| Oct 10,11, 98 | 29 th Annual Show, Doublewood Inn. Registration in this newsletter. |
| Oct 13, 98 | Beginning wood carving classes start, six Tuesday evenings, 7:00 - 9:00 PM, at New Song Church. Contact Frank Koch |

| | |
|------------------|---|
| Oct 17, 98 | Meeting at New Song Church, 9:00 - 11:00 AM. Project: Carved Eagle Head Belt Buckle by Gordon Dietrich |
| Nov 3, 98 | Whittle-In at New Song Church, 7:00 - 9:00 PM. Project: Miniature Deer by Bob Matzke |
| Nov 21, 98 | Meeting at New Song Church, 9:00 - 11:00 AM. Project: Chip-carved Christmas ornaments by Art Tokach. |
| Dec 1, 98 | Whittle-In at New Song Church, 7:00 - 9:00 PM. Project: Christmas Ornaments by Frank Koch |
| Dec 19, 98 | Christmas Meeting at New Song Church. No project. Bring goodies to share and a carving for Christmas gift exchange. Bring a gift/take a different one home. |
| Mar 12,13,14, 99 | Lynn Buehling Class, Work Horse pulling a log. |
| Oct 9,10, 99 | 30 th Annual Show, Doublewood Inn |
| Oct 7,8 2000 | 31 st Annual Show, Doublewood Inn |

Next Newsletter Deadline: November 3, 98 at Whittle-In

Sam Lacher

The Bi-Monthly Newsletter of the Flickertail Woodcarvers

Officers and Executive Board

| | |
|-------------------|--------------------|
| President | Gordon Dietrich |
| President-Elect | John Opp |
| Secretary | ----- |
| Treasurer | Bob Matzke |
| Membership | Stan Skarpohl |
| Programs | Frank Koch |
| Property | Vince Bitz |
| Librarian | Bob Matzke |
| Member-at-Large | Dan Chaussee |
| Member-at-Large | George Schamberger |
| Newsletter Editor | Bob Pedigo |

| | |
|------------------------|----------------|
| Newsletter Mailing | Mike Senger |
| Newsletter Labels List | Sam Lacher |
| Newsletter Articles | By Our Members |

Whittle-Ins are held the first Tuesday of every month, October through May, 7 - 9 PM. Meetings are held the third Saturday of every month, September through April, 9 - 11 AM. A project is offered at each function or you may carve your own project. All functions are held at New Song Church, 3200 N. 11th St. Bismarck, ND.

The Curling Chip

November/December 1998

Newsletter of the Flickertail Woodcarvers, Bismarck/Mandan, ND

Our Annual Show

Our annual show was held October 10 and 11. The show was a great success. It is only proper that we take a moment to recognize those members who made this show a success. Frank Koch was responsible for getting the instructors for the classes we were to have. Bob Matzke was responsible for our raffle, selling tickets, collecting prizes and conducting the drawing for the prizes. Bob was also responsible for setting up the tables for display and assigning tables to carvers for display. He also was responsible for collecting prizes for the banquet. Frank Koch was also responsible for advertising. You may have seen one of his fliers hanging on a bulletin board advertising the show. He also appeared on two TV shows publicizing our show for the news. He also had the Bismarck Tribune do a story and picture on Tom Wolfe for Sunday. Frank was also Master of Ceremonies for our banquet. Stan Skarpohl supervised the front desk for the entire show. Leonard Larshus supervised our senior table for the entire show. Art and Mickey Tokach were responsible for the gift exchange at the banquet. Gen Jansen was the person who sponsored and conducted the "funny fish" at the show.

I am certain I forgot someone, but I hope not and hope all of our members are appreciative of the work done by some of our members who made the show possible.

Gordon Dietrich

I recently met an old girlfriend I knew in high school. She had aged so much she hardly recognized me.

Meeting Project Leaders Needed

When looking at our schedule of events, most of our meetings and whittle-ins do not have projects planned. We have been unable to get volunteers to lead these events. You should make sure you bring your own projects to these sessions if you want to have something to carve. These openings may be filled by volunteers later, but as of the date of the newsletter printing no one has volunteered.

Bob Pedigo, Newsletter Editor

The Newsletter is Late!

You will notice your newsletter is about one month late this issue. Please accept my apology for not getting it out sooner. I have been traveling for work quite a bit lately, and while at home have been in the middle of a remodeling project. For a time, my computer was not even operable because it was disconnected and sitting in another room so work could proceed.

The pictures from the show would normally have been in this edition, but because of the work I've been doing I have them scanned, but not laid them out for printing. I will make every effort to have them in the next issue.

My project at home is nearing completion, and I should have plenty of time to get back to my regular things when it is done. The next issue of the newsletter will be out in January, ON SCHEDULE!

Bob Pedigo, Newsletter Editor

Intermediate Classes Scheduled for the New Year

Frank Koch will teach a three week Homer Hound Dog workshop beginning Tuesday, January 12. You will carve three to four Homer Hound dogs over the three weeks. Cost is \$20. Call Frank Koch at

Frank Koch and Bob Pedigo will teach a class on a ¼ size stylized Canada Goose on Saturday, January 16. This is to be an all day class. The goose will be carved using the large hand carving tools owned by our club with the work mounted on the bench or table so two handed carving practices are taught. They also plan to demonstrate the use of an Automach reciprocating power carver, a Ryobi reciprocating power carver, and possibly a Dremel or Foredom flexible shaft tool. Cost will be \$15. Call Frank Koch at

Bob Matzke will teach a class carving an 8" trout beginning on February 20. This class will last all day. If necessary, the class will also meet on the following Saturday, February 27. Call Bob Matzke at

A three day workshop taught by Lynn Buehling of Wahpeton is going to be held on March 12, 13, and 14. The project will be a draft horse pulling a log or stone-boat. Lynn had examples of these projects at our annual show and they were very impressive. We received a grant from the Dakota West Arts Council to offset the price of this seminar. The price for each participant will be only \$65.00 which includes the project materials. Registration forms for this class will be in the January/February newsletter. The club has a policy preventing us from accepting early registrations until the class is formally offered so everyone has an equal chance. Plan now to attend and plan to register when the next newsletter is published.

Bob Pedigo, Newsletter Editor

Annual Raffle Results

Prize Winners were:

Figure Carving, John Dasoviche - Bismarck; Bighorn Sheep, Nelius Nelson - Fargo; Santa Bust, John Opp - Bismarck; Carved Cross, Steve Pusc - Bismarck; Shore Bird Decoy, Paulette Scherr - Kinsal; Carved Dog, Ed Horning - Bismarck; Fisherman, Beth Bellin - Bismarck; Christmas Ornaments and Tree, John Opp - Bismarck; Doublewood Weekend, Meg Burke - Mandan; Jiffy Lube Certificate (\$25), Bob Lawrence - Fargo; Bark Carving, Linda Johnson - Bismarck; Carved Ornament, Michelle Lindblom - Bismarck; Oak Wall Shelf, Linda Olschlager - Fargo.

A special thanks to all who donated to the prizes or helped with the raffle - Frank Koch, Bob Pedigo, Gordon Dietrich, Cliff Rime, Bob Matzke, Vince Bitz, John Opp, all the people who carved or turned ornaments for the tree, Doublewood Inn, Gen Jansen, Pat Schweitzer, John Yonker, Stan Skarpohl.

We did well on the raffle. Our costs were \$105.03 and our profits were \$827.97.

If I missed your name, please accept my apologies. Your contributions were appreciated.

Bob Matzke

Woodcarvers on the Web

While "surfing the net", I found a couple of interesting web pages. The first one is www.WWWoodcarver.com. This page is produced by W.F. (Bill) Judt and includes not only his carvings, but also an electronic magazine. The magazine is in it's second year of publication and is printed about every two months. The current issue was published in November 1998 and contains some interesting articles such as the Tip O'The Day and a write up of the National Museum of Woodcarving. Readers are encouraged to submit their own articles and/or respond to what has been written.

The second site is www.carvingpatterns.com. This site displays patterns of all sorts, but caters mostly to the chip carvers. Carvingpatterns is a commercial site, and therefore all the patterns are for sale, but it may be helpful for ideas if nothing else.

Dan Chaussee

Movement of Our Equipment, Library and Records

I was called by the secretary, Becky, of New Song Church, to move the above property of our club out of the church. She told me we must hurry because they needed the space. I called the park board to learn if we could store the above equipment in our old site at the Memorial Building. They gave us permission to store the equipment there. Leonard Larshus and Herb Thurn helped me move the above to the Memorial Building.

The agreement stated that I was to call and learn the time of our returning the equipment, library and records back to the church. I called the end of August and was delayed. I continued to call about each week with no success. Then Becky asked me to come meet with the Pastor. We met and the Pastor assured me that he wanted our club to stay at the church, but he had run out of space for storage. He asked me to call back in the middle of September to find the time we could move our possessions back to the church. I called Becky in September and she had no place for us. Finally I called the Pastor and succeeded in getting him to allow us to bring our library back to the church. I was able to get Leonard and Herb to move it again which they did. Now our library is back

Gordon Dietrich, President

For Sale

Single Spindle Roughout Machine, If interested call Cleo Koch

Library Notes

New books:

50 Patterns for Dog Carvers by Tom Wolfe
108 Animal Patterns by Tom Wolfe

Donations:

By Gordon Dietrich,
Carving Kids by Ivan Whillock
How to Carve Hobos by Harold Enlow

By Ralph LaFontaine
Design and Figure Carving by E.J. Tangerman
Whittling and Woodcarving by E.J. Tangerman

Thanks to Gordon and Ralph for these donations.

The club is still missing some books. Check your shelves and if you've forgotten to return any of the books or tapes, please do so right away.

Bob Matzke

Club Caps Will Be Available After January 1

We will have club caps with the carving Flickertail logo and our club name and city embroidered on them which will be available after January 1. The caps will be approximately \$10.00 each. The club will make a small profit on each one sold and the profits will be used for purchase of additional library materials to benefit our members. Various colors will be available. See me or give me a call at _____ if you want a cap

Bob Pedigo

Must be Winter in North Dakota. Time to take off the regular snow tires and put the studded ones on.

Calendar of Events

| | |
|------------|---|
| Jan 5, 99 | Whittle-In at New Song Church, 7:00 - 9:00 PM. Project Leader/Idea Needed. |
| Jan 12, 99 | Class on Carving Homer Hound Dogs, carve 3 to 4 hound poses over three Tuesday night sessions. Price \$20. Contact Frank Koch, 255-0280 |
| Jan 16, 99 | Meeting at New Song Church, 9:00 - 11:00 AM. Project Leader/Idea Needed. |
| Jan 16, 99 | Approximately ¼ size Canada Goose Class Using Large Carving Tools and Work Holders. Frank Koch and Bob Pedigo. 8:00 AM - 4:00 PM. Cost - \$15.00 per student. Contact Frank Koch, 255-0280. |
| Feb 2, 99 | Whittle-In at New Song Church, 7:00 - 9:00 PM. Project: Valentine Carving by Frank Koch |
| Feb 20, 99 | Meeting at New Song Church, 9:00 - 11:00 AM. Project Leader/Idea Needed. |
| Feb 20, 99 | Carving an 8" Trout Class. Taught by Bob Matzke. 8:00 AM - 4:00 PM. Class may also be held on Feb 27, if required. Contact Bob Matzke, |

| | |
|------------------|--|
| Mar 2, 99 | Whittle-In at New Song Church, 7:00 - 9:00 PM. Project Leader/Idea Needed. |
| Mar 12,13,14, 99 | Lynn Buehling Class, Work Horse pulling a log or stones. Registration in January/February newsletter |
| Mar 20, 99 | Meeting at New Song Church, 9:00 - 11:00 AM. Project Leader/Idea Needed. |
| Apr 6, 99 | Whittle-In at New Song Church, 7:00 - 9:00 PM. Project Leader/Idea Needed. |
| Apr 17, 99 | Meeting at New Song Church, 9:00 - 11:00 AM. Project Leader/Idea Needed. |
| May 4, 99 | Whittle-In at New Song Church, 7:00 - 9:00 PM. Project Leader/Idea Needed. |
| Oct 9,10, 99 | 30 th Annual Show, Doublewood Inn |
| Oct 7,8 2000 | 31 st Annual Show, Doublewood Inn |

Next Newsletter Deadline: January 5, 1999 at Whittle-In

Stan Skarpohl

The Bi-Monthly Newsletter of the Flickertail Woodcarvers

Officers and Executive Board

| | |
|-------------------|--------------------|
| President | Gordon Dietrich |
| President-Elect | John Opp |
| Secretary | Cleo Koch |
| Treasurer | Bob Matzke |
| Membership | Stan Skarpohl |
| Programs | Frank Koch |
| Property | Vince Bitz |
| Librarian | Bob Matzke |
| Member-at-Large | Dan Chaussee |
| Member-at-Large | George Schamberger |
| Newsletter Editor | Bob Pedigo |

| | |
|------------------------|----------------|
| Newsletter Mailing | Mike Senger |
| Newsletter Labels List | Sam Lacher |
| Newsletter Articles | By Our Members |

Whittle-Ins are held the first Tuesday of every month, October through May, 7 - 9 PM. Meetings are held the third Saturday of every month, September through April, 9 - 11 AM. A project is offered at each function or you may carve your own project. All functions are held at New Song Church, 3200 N. 11th St. Bismarck, ND.