

# THE CURLING CHIP

Jan./Feb. 2004

THE NEWSLETTER OF FLICKERTAIL WOODCARVERS, BISMARCK/MANDAN,  
NORTH DAKOTA AND SURROUNDING AREAS.

## OFFICIALS AND EXECUTIVE BOARD:

President	Ed Homing
Past President	Mitch Olson
President Elect	
Secretary	Warren Schlecht
Treasurer	Ron Holtz
Membership	Stan Skarphol
Programs	Frank Koch
Property	Bob Pedigo
Librarian	Perry Cook
Member at Large	Ed Homing
Member at Large	Ron Torgeson
Newsletter Editor	Robert Matzke
Asst. Newsletter, Labels	Sam Lacher
Asst. Newsletter, Mailing	Val Gabbert
Asst. Project Coordination	Jim Lindseth



THIS NEWSLETTER IS SPONSORED IN PART BY DAKOTA WEST ARTS COUNCIL. THE CONTENT  
HEREIN IS DEDICATED TO THE ART OF WOODCARVING, MEMBERSHIP BENEFIT AND ENJOYMENT.

WHITTLE-INS ARE HELD THE 1<sup>ST</sup> WEDNESDAY OF THE MONTH, SEPT/MAY FROM 7-9 PM. REGULAR  
MEETINGS ARE HELD ON THE 3<sup>RD</sup> SATURDAY OF THE MONTH, SEPT/MAY FROM 9-11 AM. MEETINGS  
ARE HELD IN THE DAKOTA ZOO, BISMARCK TRIBUNE DISCOVERY BLDG. LOCATED AT THE SOUTH  
WEST END OF SERTOMA PARK. SUMMER WHITTLE-INS, JUNE THROUGH AUGUST ARE HELD IN  
SHELTER # 4 IN SERTOMA PARK FROM 5 PM UNTIL DARK.

**FLICKERTAIL WOODCARVERS**

**P. O. BOX 7473**

**BISMARCK, NORTH DAKOTA 58507**

## GREETINGS AND BEST WISHES

To all members of the Flickertail Woodcarvers Club. May your 2004 carving year be rewarding and filled with enjoyment. RM.

By now you've finished off the Christmas Turkey and the New Year's ham. You're more than sick of leftovers. Besides you're sick of being on vacation and stuck indoors because of the weather.

I know that you're seriously thinking about what the carving club will provide for you in 2004.

Here's what I know in on the menu:

Loads of friendship and good conversation, The opportunity to improve your ability and technique. New carving experiences, The opportunity to attend meetings and whittle-ins, The right to provide your opinion, ideas and assist in the direction of the club. Chance to attend special classes, The opportunity to use club library. Chance to have your articles or projects published in newsletter, Great chance to use summer meetings to replenish your stock of carvings for the Fall Show, Right to attend the 2004 Fall Show and display and sell your carvings, You can elect to instruct a project at a whittle-in or meeting, you have the opportunity to attend special functions such as carving events at members homes and the Christmas Party.

But as you can see, everything depends on you. To be successful, you need to be involved. You are a major part of the club, which without you can not meet the plans projected above.

## CARVING TIP

When you need to carve small items such as hands, tools, pieces of equipment for your main carving, use the "Stick Method" To do this draw your pattern on the end of a stick, which is longer than the part that needs to be carved. The rest of the stick will serve as a handle for you to hold onto. When your carved part is complete, simply separate the part from the stick. This method will allow you to work with ease and is far safer than trying to hold onto a tiny small part.

## SOMETHING TO THINK ABOUT

A day without sunshine is like, well night. What is the definition of a flashlight? It is a case to hold dead batteries.

## SPRING CLASS

Boy do we have a good one for you this year. I got the chance to view the instructor's work and I found it to be exceptional.

Your club has arranged to host Pat Moore of Kindred, ND on April 16/18, 2004.

Pat is a very experienced carver of waterfowl and game birds. She has extensive background in habitats. She has done displays for various museum dioramas.

The project of this class will be a flying mallard with a 6 inch wingspan. It will be over habitat and on a base if you wish.

The cost of the class will be approximately \$60.00 plus cost of the base and blank.

The registration form will be issued in the Mar/Apr issue of the newsletter. Watch for it and return ASAP to improve your chances of getting into the class. The class size will be limited to 12 carvers. Positions will be filled on a first come first served basis. If a great number of registrations come in on the first day then there will be a drawing. Good Luck.

## MAIN CLASS FOR FALL SHOW

Its final, we will be hosting Gary Frank of Eagle River, WI. The class dates will be November 13 and 14<sup>th</sup>, 2004. We may include Fri. evening, the 12<sup>th</sup> if possible. Some power tools recommended.

The class will be a Yellow Perch, full size (12"). Gary is a very good fish carver. He has won World Championships and Best of Shows several times. He has been televised on numerous sporting shows.

We have not yet defined the cost per carver, but it should be around \$100.00. We will provide more information in the July/Aug issue of the Newsletter and issue registration forms. If you like fish carving you do not want to miss this class.

## 35<sup>TH</sup> ANNUAL SHOW

Take note that the dates are November 13/14<sup>th</sup>. This is a month later than other shows in the past. This promises to be a very good show and one that you should make every effort to attend. Plan you vacations now. BUT REMEMBER, we do have cooler weather in November up here on

the high plains. Bring warmer clothing just in case. Don't worry too much about snow. The City of Bismarck has a excellent record on snow removal. They do it quickly and provide plenty of sand afterwards. The State Highway Dept. is also trustworthy about clearing the interstate. So your travel will be safe. Come on to Bismarck and enjoy our show.

## JOINT SHOW WITH WOODTURNERS

At the 34<sup>th</sup> Fall Show we were approached about having a joint show with the wood turners. It could perhaps be held in the Civic Center with some cost sharing.

The E-Bd had some lengthy discussions, but took no firm action at that time. It is planned to bring the topic up at future meetings. Right now we need input from the club members. How do you feel about this subject? Either for or again, let members of the E-Bd. Know.

## NEW APPROACH

Ron Davidson is the carver that brought this to my attention. Ron had carved a polar bear and left it natural with just a clear finish. He mounted it on a base, which was painted to represent an ice flow. It really turned out nice. For those of you who don't like to paint. This is a way to do a simple habitat and have a great carving that will appeal to everyone. See attached photo.

## SOAP STONE RESURCE

Last summer I promised an address where you could get stone supplies. Here it is:

Natural Expressions Rock Shop  
13802 E. Williams Field Road  
Gilbert, AZ  
(408) 963-6552  
<https://natural-expressionsinc.com/>  
Updated 2021

Web is                      see above                      They claim  
to have 1 ½ acres of rocks up to 5x10ft. I'd like  
to see them mail that one.

## GOLF BALL CARICATURES

These are not carved golf balls, but rather a caricature carved on wood with a golf ball placed into an opening in the wood.

California Member Bill Buckingham says he really enjoys carving these. He has done many

and uses them as gifts. He says the club could carve some and use them as awards, gifts or for promotions. Bill has sent three pictures of those that he recently completed. Thanks Bill. RM.

## SPECIAL THOUGHT

Light travels faster than the speed of sound. This is why some people appear bright until you hear them speak.

## SENIOR CARVING

Chairperson Stan Skarphol wants to remind us that Senior Carving is held every Thursday from 1-3 PM at the Burleigh Co. Senior Center. 315 N. 20<sup>th</sup>, Bismarck. ND. You do not need to belong to the Center to join the carving group. You just have to be 55yrs or older. Carving will continue until the 3<sup>rd</sup> Thursday in May. If you want more information contact Stan at

## THE DICKINSON CLUB

Richard Wehner also a member of the Flickertail Club provides the following on his club.

Our club was formed in 1993 by myself and one other carver who is now deceased. The idea of a carving club came from our State Senator, Bill Goetz. He was attempting to find more uses for the Senior Center. We meet every Thursday Morning at the Sunset Senior Center. The club is very informal. There are no officers and no dues are collected. We don't even have an official name. At one time a member suggested that they be called the "OFC", which could mean the Old Fellows Club, but it didn't stand for that either. Anyone is welcome to visit and do some carving. We have some who come every Thursday and watch our progress. Our local newspaper has done a full page story on us and KFYY TV has done a news story about the club. I have taken my carvings to display at the Taylor, ND Horsefest. A retirement home Arts Exhibit at Dickinson State Univ. and the Second Grade at St Wenceslaus School in Dickinson. I put on a carving demonstration for the second graders and let the chips fall on the floor. The kids were so impressed they thought the chips made good keep sakes and picked up all the chips when I was finished to take home.

## THOUGHT

You might be a N. Dakotan if you can't cook, but can jerk meat in 10 different flavors.

## THOUGHT CONT.

You might be a N. Dakotan if dressing up to you is putting on new camo's.

You might be a N. Dakotan if you don't buy tires for mileage, but for how far they can get you down the muddy road.

## BOSNIAN WOOD CARVER ATTENDS 34<sup>TH</sup> ANNUAL SHOW

Izudin "Izo" Becic and his spouse Mena attended out 34<sup>th</sup> show and displayed his work. This carver is very skilled. His work represents a Euro style that is in demand today in the USA. I have included photos of Izo, his spouse and work. Here is his story:

My career as a woodcarver began at the age of 14 when I started working as an apprentice to my brother who was trained as a master wood carver in Bosnia. I have been perfecting my craft for the past 36 years, producing both commercial work and enjoying it as a hobby for relaxation. In Bosnia, I carved larger items like doors, mantles for fireplaces and custom-made furniture. I have also done antique repair and restoration. Following the war in Bosnia in 1992, I became a refugee to Germany where I lived with my family for 7 yrs. Before the Gov. told us we must return to Bosnia since the country was considered "safe". However, my family's home was now in Serbian territory so we had nowhere to go. We went to Croatia, a neighboring country, where we applied once again to become refugees. This time to the US. We arrived in Fargo, ND Feb. 20, 2001, so have been in this country for 1yr and 2 mos. It has been difficult to learn yet another language, I spoke two before going to Germany and learned German while there. Getting used to the customs and culture of a new country was difficult, but bringing my craft with me has helped to make the transition to USA easier. I now do the same artistic style as I did as a child. In Bosnia I did my own sketches and designs. I am able to do any kind of work that lends itself to carving. Exploring new motifs such as wildlife, trees and other forms found in nature has brought a new dimension to my work. Making American friends through my woodcarving has been another rewarding aspect of life in this new country.

Your editor watched Izo work on a piece that was to be a clock and was fascinated with the ease that he carves. Some of the pieces of his

work are what I would like to see classes on. During my communications with him, he said that he would be willing to conduct classes for us on his style of work.

I'd like to add that he said life in the US is very different. In Bosnia children are taught the arts and trades in school. He said there were approx. 5 million people in Bosnia and 280 Million in the USA, but he would bet that there was more artists in Bosnia then here because of the schools. He is glad to be here, but is having a hard time adjusting to the factor of fear. When he hears sirens etc. he gets that old feeling he had at home. These are things we take for granted. He's making the adjustments and we wish him and his spouse welcome.

## CHRISTMAS PARTY

On Nov. 22, we had a great party at the Elks. The food was good and conversation very lively. Pres. Ed Horning coordinated the gathering well. The gift exchange went without a hitch and all got very nice carvings or gifts in the ladies case.

NOTE; Nona Rime has ask that someone from the Bismarck/Mandan area take over coordination of the party for 2004. She is too far out ( Garrison, ND ) to be effective. This was discussed at a recent meeting. A couple members stated that they would ask their spouses if they would assist in these duties. More to come on this. Thanks Nona and Shannon for all you have done for us.

## LIVE ART IN MOTION

The Club has elected to participate in this event on Feb. 7, 2—4 from 10 AM to 4 PM This will be in the Kirkwood Mall. We have 2 tables. Carvers are ask to volunteer time a couple hours at a time during the period. They will carve and display there art. The purpose of the event is to let the general public know what the area has to offer in the way of arts all in one place. If you can fill a position call Frank Koch at In the past these events have been fun. You can't sell, but you could take names.

## CANES

It looks like we will continue with the display. We have a basic number but still could use more canes. The last date to deliver canes to Frank Koch for the display is Feb. 4, 2004 at the whittle-in. Lets make this work.

## MEMBERSHIP DUES

Don't forget to pay your 2004 dues. They were due on Dec. 31<sup>st</sup>. Remember that the club voted to raise the dues to \$15.00 per year. If you haven't paid up yet send you checks to Flickertail Woodcarver, P.O. Box 7473, Bismarck, ND. 58507. Atten. Stan Skarphol

## NEWS FROM GERMANY

Member Alison Remerth, Son-Taylor and Spouse Mike were recently transferred to Heltersberg Germany. They are well and wish all a Happy Holidays and a good year. They are adjusting to the area and cultures there. The language is a bit of a problem, but that is being overcome. She says that they have been sightseeing and having a really good time. There are a lot of neat carvings in the Black Forest Shops. She sent a few pictures that are on file if you wish to view them. I will have them at the next few meetings. We wish them well and perhaps she can send us a few ideas from over there.

## HIGHLIGHTS OF RECENT MEETING MINUTES

11-15-03 Our Treasurer reported that there was \$3075.00 in the account. We also were awarded a \$650.00 grant from DWAC. This grant will be used to help fund the Spring and Annual Show Classes.

The Club's BAGA membership will be expiring soon. There was discussion on the benefits that we receive by belonging. It was determined that we receive no benefits, and so it was decided to let the membership expire without renewal.

Newsletter Editor ask for assistance in setting up projects for the whittle-ins and meetings. Jim Lindseth volunteered to assist in making contacts with members and others to arrange for projects.

Bob Pedigo briefed all on the Cable 12 TV Video tape which was recently made. He was ask to bring a copy for showing at the next meeting.

An E-Bd meeting was scheduled for 11-24-03 at 6 PM. In Perkins South. President Horning will arrange for this and contact all E-Bd.

12-20-03 President Horning was on vacation so Bob Matzke coordinated the project and Meeting. The project was a Holly Leaf Ornament. Bob Pedigo presented the Cable 12 Video for viewing. Bob and Frank Koch made

the presentations. The video was of very good quality and content. Worth viewing. A copy is available from the club for viewing.

Treasurer's report was \$3135.00 in account. All bills have been paid at this point.

Frank Koch addressed concerns of food and rooms that we experienced during the Oct. Show at the Doublewood Inn. Research was completed and it was discovered that Sept. or Oct. are not good months for booking an event by a club our size in the Bismarck/Mandan area. Recommendation was to remain with the Doublewood as we have reservations existing for Nov. 2004. But to reach agreement on previous concerns so the are not repeated.

Frank Koch reported that the Cane Project is a "GO" as we have the basic number of canes committed. We can always use more. Bring your canes to the Feb. 4, whittle-in. They will be on display at the Memorial Library in March/April.

Our Christmas Party Coordinators have requested to be relieved of their responsibilities. They live too far out of town to make regular and routine contacts. It would be more appropriate for someone from the Bismarck/Mandan area to handle these duties. A couple of members indicated they would ask their spouses if they would assist. Hopefully the positions can be filled by the next meeting. Will keep you posted. The Club wishes to thank Nona Rime and Shannon Olson for the work they have done in the past on our parties.

A reminder on 2004 dues, they are due on Jan 1, 2004 and are \$15.00 this year. Please remit your dues early. It saves the club funding in postage etc.

Warren Schlecht provided the giveaway carving at the meeting, having won it at the last meeting. Bob Pedigo was the winner this time. He received a very nice and delicate icicle carving. He will provide the carving for the Jan. 7<sup>th</sup> whittle-in.

## SCHEDULE OF EVENTS

Whittle-ins are held on the 1<sup>st</sup> WED. of the month from 7-9 PM and our Meetings are held on the 3<sup>rd</sup> SAT. of the month from 9-11 AM. So far all dates need projects except the following few listed.

February 4, Frank Koch will present a Valentine carving. It is also the date to bring in your canes.

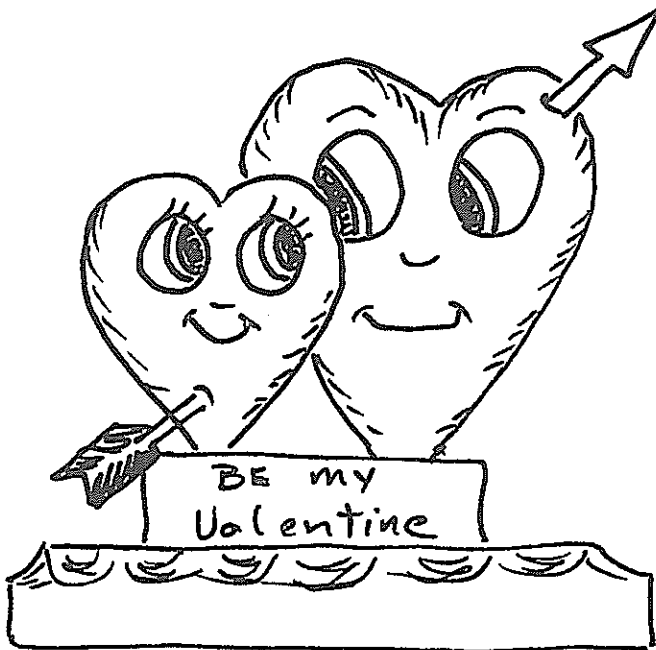
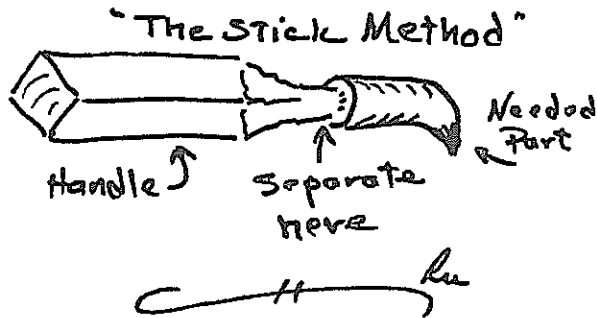
April 16/18 is the date of the Pat Moore class. It will be a flying mallard duck. This is a special class. The times will be announced in the next issue of newsletter.

November 13/14 is our 35<sup>th</sup> Annual Show at the Doublewood Inn. Gary Frank of Wisc. An expert fish carver will be instructing on a full size Yellow Perch over habitat. Times will be set and posted.

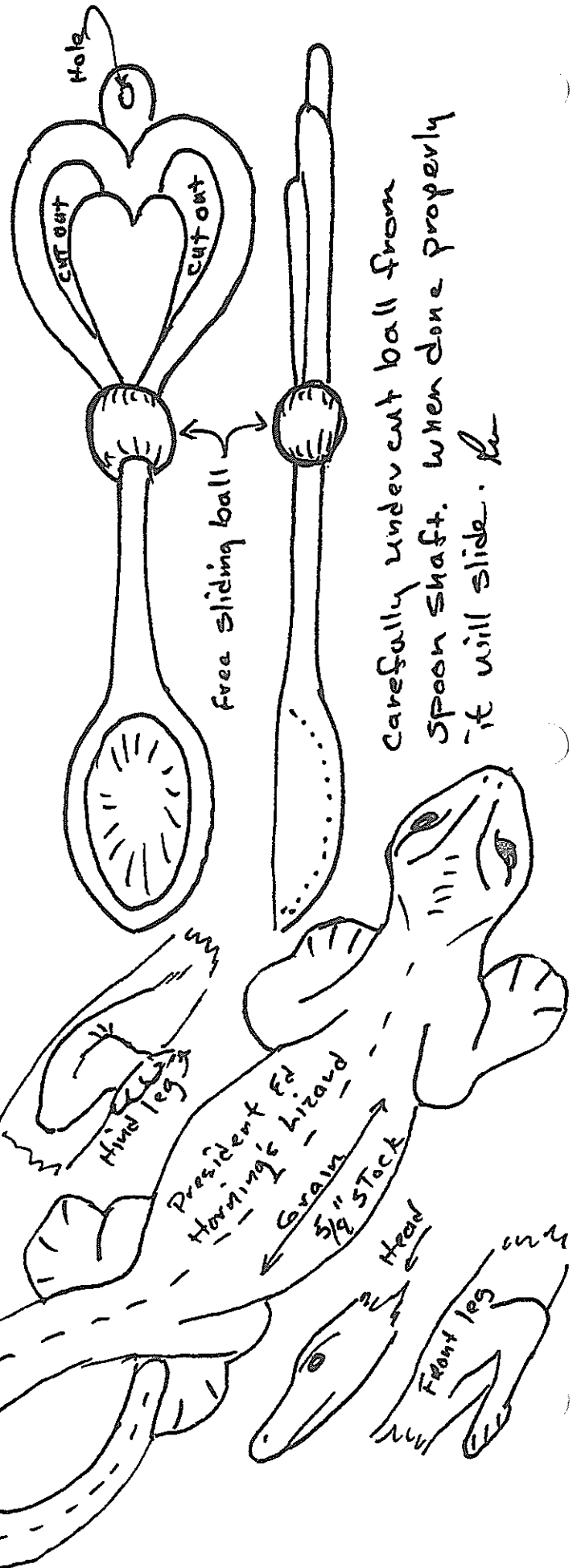
Remember, we can always use your projects /ideas or expertise. Contact Jim Lindseth or Bob Matzke if you can volunteer something.

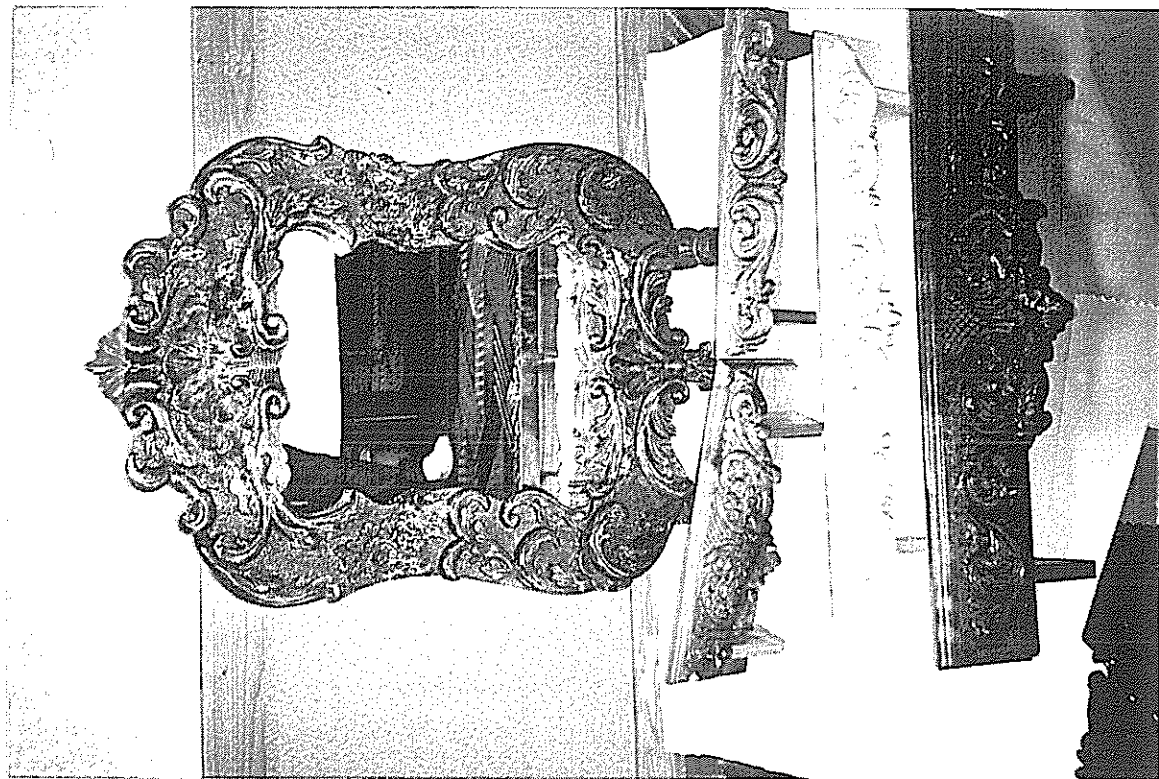
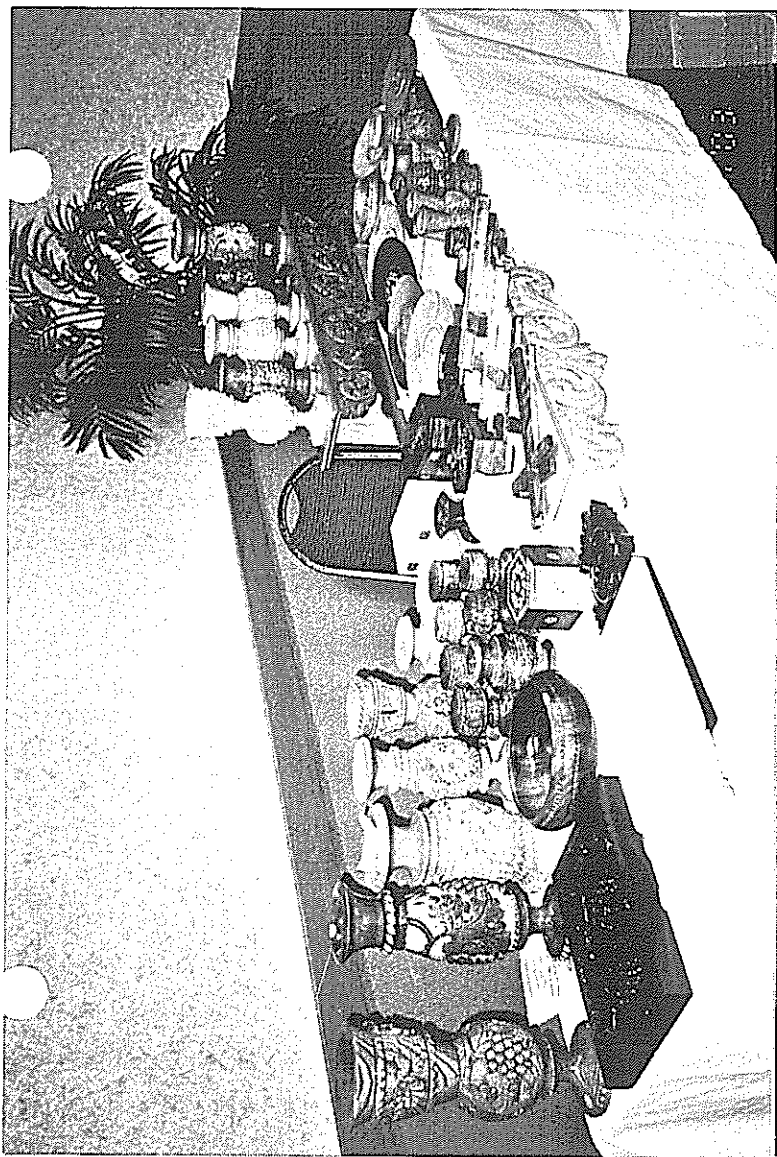
### NEST ISSUE

In the next issue there will be an article on sharpening of tools. There will be tips, what to do and what not to do. And if the research is completed there may be an article on finishing your carving.

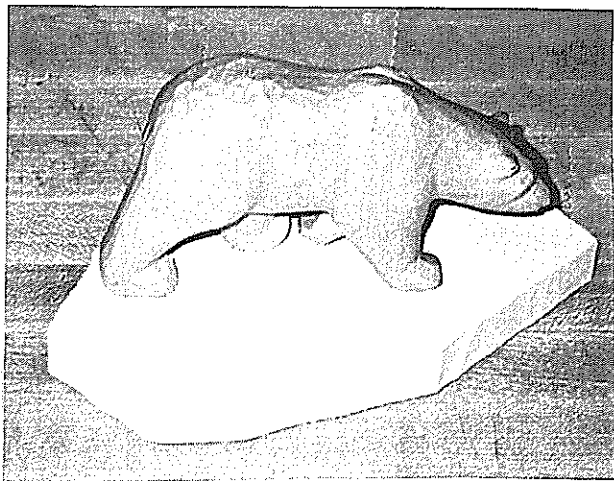


This one is for Sam L. Use  $\frac{1}{2}$ " or  $\frac{3}{8}$ " stock. Carve hearts and bases separate and glue together. Then add the arrow. Just glue visible parts onto hearts. *lu*



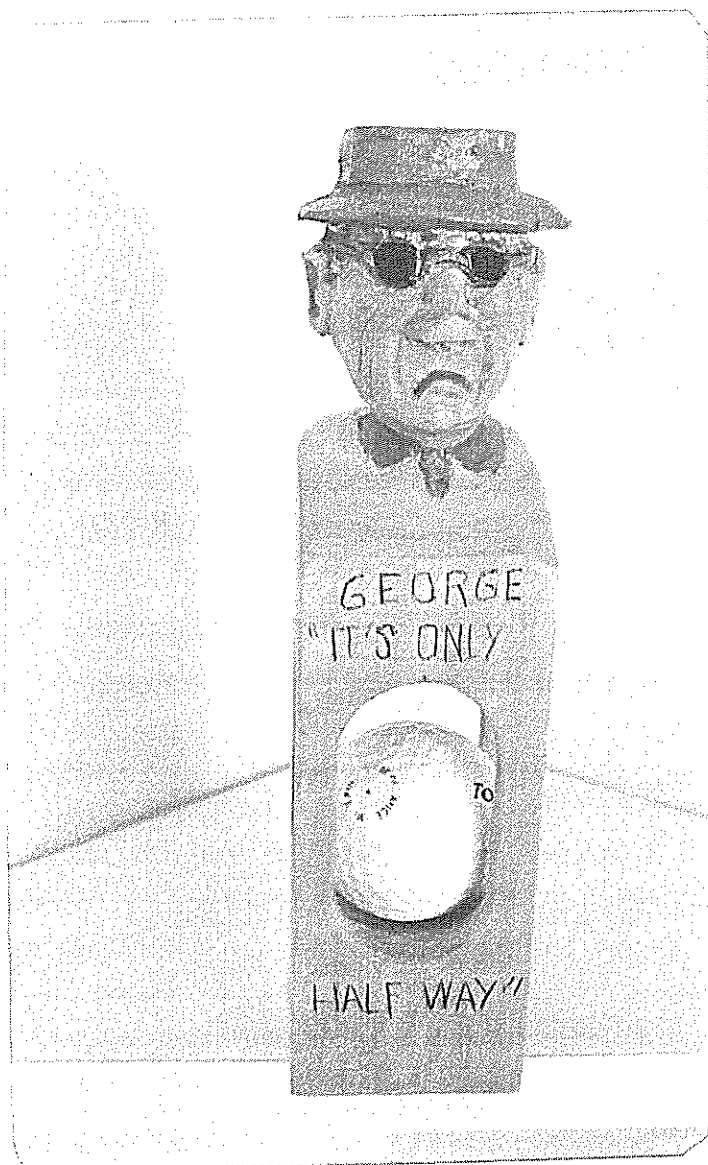
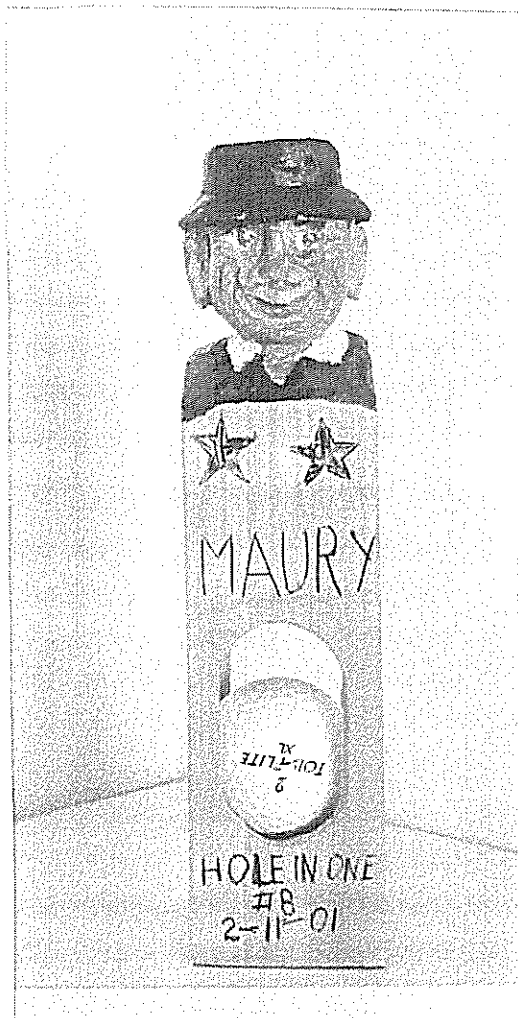


Izudin "Izo" and Mena Becic  
and his work. Izo learned  
his carving trade in Bosnia  
He now lives in Moorhead MN.



Ron Davidson's New ↑  
Painting Approach.

Bill Buckingham's Golf  
Ball Caricatures ↗



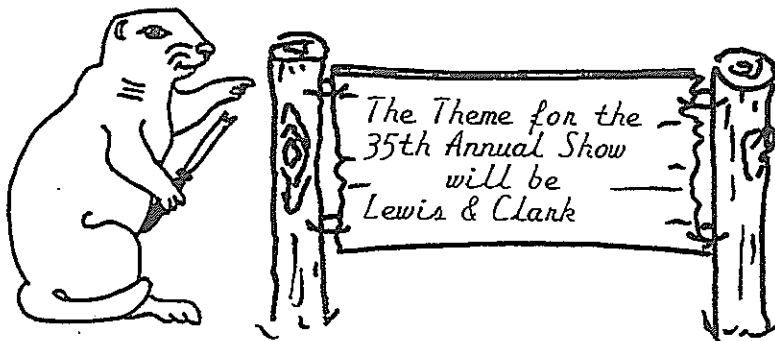
# THE CURLING CHIP

Mar / Apr, 2004

THE NEWSLETTER OF FLICKERTAIL WOODCARVERS, BISMARCK/MANDAN,  
NORTH DAKOTA AND SURROUNDING AREAS.

## OFFICIALS AND EXECUTIVE BOARD:

President	Ed Horning
Past President	Mitch Olson
President Elect	
Secretary	Warren Schlecht
Treasurer	Ron Holtz
Membership	Stan Skarphol
Programs	Frank Koch
Property	Bob Pedigo
Librarian	Perry Cook
Member at Large	Ed Horning
Member at Large	Ron Torgeson
Newsletter Editor	Robert Matzke
Asst. Newsletter, Labels	Sam Lacher
Asst. Newsletter, Mailing	Val Gabbert
Asst. Project Coordination	Jim Lindseth



THIS NEWSLETTER IS SPONSORED IN PART BY DAKOTA WEST ARTS COUNCIL. THE CONTENT  
HEREIN IS DEDICATED TO THE ART OF WOODCARVING, MEMBERSHIP BENEFIT AND ENJOYMENT.

WHITTLE-INS ARE HELD THE 1<sup>ST</sup> WEDNESDAY OF THE MONTH, SEPT/MAY FROM 7-9 PM. REGULAR  
MEETINGS ARE HELD ON THE 3<sup>RD</sup> SATURDAY OF THE MONTH, SEPT/MAY FROM 9-11 AM. MEETINGS  
ARE HELD IN THE DAKOTA ZOO, BISMARCK TRIBUNE DISCOVERY BLDG. LOCATED AT THE SOUTH  
WEST END OF SERTOMA PARK. SUMMER WHITTLE-INS, JUNE THROUGH AUGUST ARE HELD IN  
SHELTER # 4 IN SERTOMA PARK FROM 5 PM UNTIL DARK.

**FLICKERTAIL WOODCARVERS**  
**P. O. BOX 7473**  
**BISMARCK, NORTH DAKOTA 58507**

## GREETINGS FROM YOUR EDITOR;

Relax, I know you're up to your knees in snow. There are lights at the end of the tunnel. The older you are, the fewer outside activities you have available. So you can either stay inside where its warm and finish some of those pieces you started last summer. Or you can do like many others. Pack up and go south on a vacation. I'm not talking "snowbirds" now, but just a week or two in the warm lands.

That's what I did in early February. I left Bismarck in 28 below zero weather for Las Vegas. It was a great vacation. The buildings were something to behold. The food was great and the temperatures were for the most part in the 50's. I even went Stripped Bass fishing and caught one that weighted 7 pounds. I wasn't a winner at the tables or machines. But I did have fun and watched my money slide through my fingers.

If there is a down side, it's the large number of people. Its really crowded and the costs of everything has risen.

We returned to Bismarck in a raging blizzard. The roads were closed. When I finally did get home, it was 4WD all the way to the house. Before settling back into routine, it was a 3 1/2 hours snow blowing job. While clearing the quarter mile drive, I ask myself several times why I lived in North Dakota. At first I thought the answer was that I was stupid. Then I realized was not correct. I really love it here. I have a little of everything. Others can not claim that. The break was good for me and should be enough to carry me through the remaining months of winter.

A little P. S. here, Its now March first and we have had three days of snow. Its starting to pile up again. I hope it better where ever you are.

## PRODUCT REVIEW;

By now most of you have heard of the new "Carvin' Jack" by Flexcut. This multi-tooled pocket knife is stated to be for woodcarving as to what the Swiss Army Knife is to MacGyver, or the Boy Scouts.

A good friend had purchased one and thought it would be a good tool for me. I have large hands and carve everywhere, While fishing and hunting, I would not have to take my large tool box along.

I made the purchase, a healthy price. \$129.99 plus shipping. I thought my wife Diane was going to have a heart attack when she heard me talking about the knife to another friend.

I put the knife through some tough tests and it proved to be an excellent tool for a number of carvings. The size is such that it filled my hands lending to more comfort. I had six tools to select from all in my hands at one time. The blades are razor sharp. The manufacture includes strop and specially designed sharpening block. This block has the contour of both sides of every tool angle. The knife is constructed with a lock when a blade is opened/extended for carver safety.

The only draw back, I found with the knife is that the nail slots for opening are not deep enough. And this causes you to put undue pressure against the blade and it carries to the next blade. It frequently opens along with the one you want. You then have two blades to be careful of. You also want to make sure that all blades are securely down inside the handle so you are not exposed to the cutting edges.

Aside from the above concern, I found the knife to be an excellent tool with quality steel. It is easy to carve with and is a full tool box that you can carry around in your pocket. I'm looking forward to many more hours of carving this summer with my Carvin' Jack.

This knife may not be for everyone, due to the high cost, but if it fits your carving styles you can find the tool available through a couple major woodcarving supply companies.

## SAW FOR SALE;

Dave Kingsbury has an older model Black & Decker 7 1/2 inch, model 9422 band saw for sale. He is asking \$20.00 for the saw.

He says that he has used it for several years. He says it is in good shape and would be a good starter saw for a new carver. The reason for wanting to sell is that he is upgrading to a new saw with a larger throat.

If interested in this saw, contact Dave and

## NEW ADDRESS;

The Red River Valley Woodcarvers have a new mailing address. It is 1913 26 1/2 Court S., Fargo, ND. 58103. Change your address books.

JAN. 17, 04 MTG. MINUTES;

Ron Holtz had the project, which was making sheaths for carving knives. He provided many ideas and they were fun.

Treasurer, Ron Holtz reported that we have \$3461.00 in the account with all the bills paid.

Frank Koch spoke on the Art in Motion event being held at the Kirkwood Mall on Feb. 7<sup>th</sup>. He ask for volunteers to represent the Flickertail Woodcarvers and woodcarving from 10 AM to 4 PM. A sign up sheet was passed around. Volunteers will have a specific booth and are ask to fill in a period of time. Ex. 2 Hrs. They are to bring a few carvings to display and something to work on while there. We have taken part in this event for a number of years now. It seems to do well for wood carving.

The canes are due on 2-21-04. Don't forget to bring them to the meeting and give to Frank Koch. Have your name on them some where. The canes will be displayed in the Public Library for the next two months.

We have 3 ladies to plan the 2004 Christmas Party. They are Lois Horning, Karen Pedigo and Kay Koch. If you have any suggestions contact these ladies.

Jim Lindseth reports that there are a few dates open for volunteer project instructors. He needs you to step forward and be counted. If you need assistance in cutting blanks or how to instruct, just ask. You will get the assistance you need. Volunteer instructors are an important part of our club functions. They provide new ideas and projects for the members, while building up the confidence of the instructor. I have spoken to many first time volunteers and they said it wasn't as hard or nerve racking as they had thought. In fact it was fun. If you can be a volunteer contact Jim Lindseth or Bob Matzke.

The Pat Moore class on Flying Mallard will be 4-16,17,18-04. It will be held at Bob Pedigo's home. Also the regular club meeting on the 17<sup>th</sup> will be held there. All are encouraged to come out to Bob's home.

Dave Kingsbury agreed to act as Nominating Committee Chairperson. The club needs to fill the position of ( President Elect ). All other positions that are open will be filled by those presently in the position. All volunteered to remain another year. If you can fill this position please contact Dave.

Frank Koch suggested that we have a theme for the Annual Show. Lewis and Clark was voted as the theme. We have utilized this theme before. However, this is the appropriate

year for the theme. Everyone is ask to carve something that represents the period to display on their tables. Some ask for ideas. If you keep your old newsletters, we printed a whole issue of ideas about two years ago. Dig that issue out. If you do not have it, try some of these; Wildlife to include deer, bear, elk, buffalo, fish, birds. You can do relief of the group in canoes, camping, hunting or fishing. You can carve figures of the group or Indians of the period. The limits are the span of your imagination.

Bob Pedigo provided the giveaway carving. It was an ironwood sea life piece. Ron Holtz was the lucky person to receive it. He will provide the next carving.

### WHITTLE-IN, 2-04-04;

Frank Koch instructed carving a Love Spoon, which has been tradition for him each Spring before Valentine's Day. Everyone had a good time and went home with a nice project.

Do you know the meaning of the symbols on Love Spoons? Here are a few meanings taken from the Spring Issue 2004 of Woodcarving Illustrated.

Balls, seeds, spheres = Desire to have children. The number of each object means the number of children. It also means that love is cherished and marriage is blessed.

Bell = Celebration of marriage or anniversary.

Chain or links = Togetherness for ever or never separated.

Clover = Means good luck.

Cross = Faith in Christ or God's Blessing.

Diamonds = A wish for wealth.

Dolphins = Good luck, wish to with loved ones.

Double Spoon = Couples should be together.

Feathers = Three, equal the symbol of Prince of Wales ( fleur-de-lis ), desire to give service and nest building. Like a home.

Fruit = Fulfillment of love and wishes.

Hands = Desire for friendship.

House = Informs girl that he's willing to work and provide for her.

Key = His heart has been won, security and sharing.

Lock = Wish to lock girls heart into his forever.

Multiple Spoons = Wish for marriage and family.

Shield = Willingness to look after and protect.

**Ships = Safe return or smooth voyage through life.**

**Twisted Stem or Spiral = Two lives becoming one, a lasting union.**

**Trees = Growth and fertility.**

## NEWS FROM MESA, AZ.

Clara Yonker wrote to let us know she has been busy instructing classes for the club in Mesa. They are known as Gambel's Quail Woodcarvers. She enclosed a photo of recent Bark Carvings of Santas ( see insert else where ). Her next class will be on the fan carved birds. She secured blanks from Cliff Rime for peacocks. She invites anyone vacationing in the Mesa area to give her a call. Also if you want any soapstone, let her know how much to get.

## UP DATE ON ARTS CENTER;

Frank Koch attended the 2-11-04 meeting and reported that things are progressing well and in a positive mode. We could really do well as a carving club if we had use of such a site. Only one person spoke against the use for an arts center. There have been a few negative editorials in the newspaper. The concerns seem to be about spending tax monies. Their suggestions would also use tax monies. Only to a greater degree. There would be no off setting income as with the arts center proposal. We would of course have a rental fee. A moderate one which we could afford. We need to stay on top of this issue and give it the support necessary.

## ZOO COMPLEMENT;

It has been stated by Zoo personnel that we as a club have been very responsible and take care of the building and equipment better than most. They never have to worry about cleaning up after us. It's nice to hear such things. We thank the Zoo. I also thank the members for being aware and making sure we maintain the above standard.

## A LITTLE HUMOR;

These are signs seen on vehicles and buildings from through out the country. Taken from the internet.

**ON A PLUMBER'S TRUCK; We repair what your husband fixed.**

**PIZZA SHOP SLOGAN; 7 days without pizza makes one weak.**

**ON A PLUMBER'S TRUCK; Don't sleep with a drip, call your plumber.**

**ON A MATERNITY ROOM DOOR; Push. Push. Push.....**

**AT A CAR DEALERSHIP; The best way to get back on your feet---miss a car payment.**

## 'THUMPER';

Right after the Jan. 24/25<sup>th</sup> blizzard, I watched a cottontail rabbit come out of a brush pile. It would take a hop and then stomp it's hind feet up and down several times. It continued to do this for 25 to 30 yards. I thought at first, it might have a brain condition. Then I realized it was packing a trail through the new snow. The thumping of the hind feet packed the snow hard enough to hold it's weight. My own Thumper was making his own fast track. Maybe Walt Disney got his rabbit's name from a similar situation. I had never seen this before. I guess one can always learn some thing from nature.

## REGISTRATION;

Registration for the Pat Moore, Flying Mallard Class will be attached to this issue. If you want a chance at this class, do not hesitate to send the registration form along with fee to Frank Kock ASAP.

A special note. This class will be held at the Bob Pedigo home. A map is provided. On Friday and Sunday carvers are to bring their own food and drink. On Saturday Morning they are to do the same. Bob will plans on having a Pot Luck dinner. So please bring something for this meal. Those attending the regular meeting and wishing to stay for the meal are also ask to bring something. Bob said he would provide the burgers and buns. There will be no menu, so any thing goes. Bring what you like and we'll like it too.....

## SCHEDULE OF EVENTS;

Mar. 3, 04	Whittle-in, 7PM. Bob Matzke Will instruct on smiling leaf.
Mar. 20-04	Mtg. 9AM. Bob Pedigo will inst. On chip carved cross.
Apr. 7, 04	Whittle-in, 7 PM. Stan Skarphol will do Easter Proj.
Apr. 16/18,04	Pat Moore's Flying Mallard Class. At Bob Pedigo's home.
Apr. 17, 04	Mtg. 9AM will be held at Bob Pedigo's home in conjunction with Moore class.

May 5, 04 Whittle-in, 7 PM. Ed Horning Has project.

May 15, 04 Mtg. 9AM. Vince Bitz will do A Buffalo or Steer head. If Vince is on vacation, Bob Matzke will do instructing.

June 2, 04 Sertoma Park 5PM

July 7, 04 Sertoma Park 5PM

Aug. 4, 04 Sertoma Park 5PM

Aug. (?) Matzke will host a carving Session at his Washburn Home. More to come on this.

Sept. 1, 04 Whittle-in, 7PM, Ed Horning Has proj. making Drift wood Bases.

Sept. 18, 04 Mtg. Open Proj TBA

Oct. 6, 04 Whittle-in, 7PM, Val Gabbert Will do painting of projects.

Oct. 16, 04 Mtg. Open, Proj TBA

Nov. 3, 04 Whittle-in, Open Proj TBA

Nov. 12/14,04 Annual Show and Gary Frank Fish Class. Other classes to be Announced.

Nov. 20, 04 Mtg. 9AM. Dave Kingsbury Doing Sioux Indian Plaque.

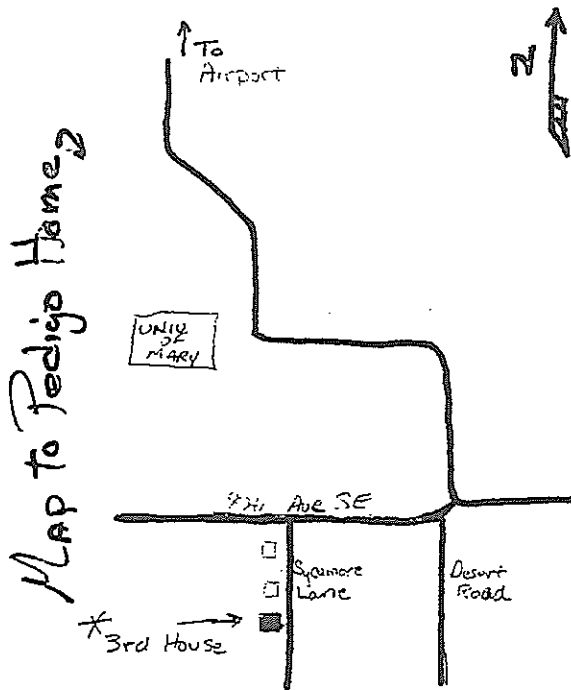
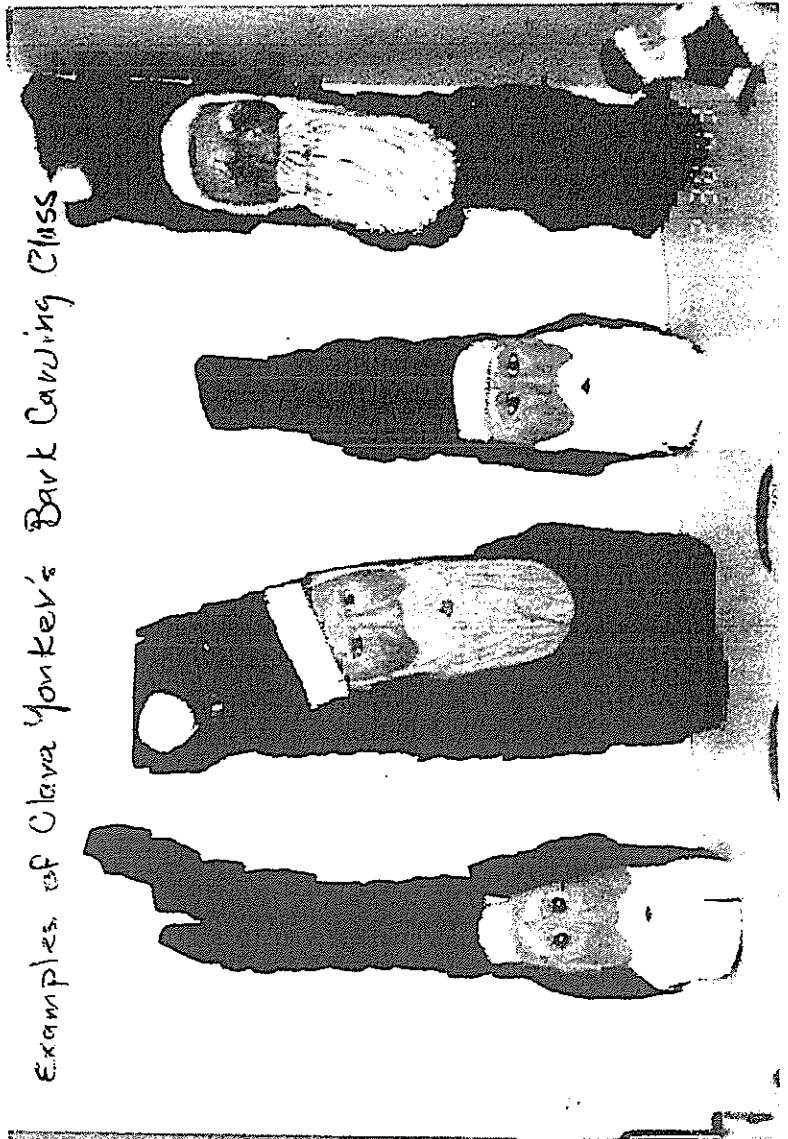
Dec. 1, 04 Whittle-in, Open Proj. TBA

Dec. 18, 04 Mtg. Open Proj TBA

Jan. 5, 05 Whittle-in, Open Proj TBA

Jan 15, 05 Mtg. Open Proj. TBA

Examples of Olava Yonker's Bark Carving Class



Bob Pedigo's House  
9130 Sycamore Ln.  
Phone 258-0702



If we were to hold a wet T-shirt contest. A father and son team like above would be a sure winner.

## SPECIAL ARTICLE ON SHARPENING TOOLS

By Bob Matzke March, 2004

Far too often, I've watched people trying to carve with a knife that has shoulders similar to that of a cold chisel. They can not carve well and are constantly complaining about sharpening. They are always putting the knife to the stone and increasing the angle of the shoulder in addition to roughing up the surface of the knife. They simply do not know how to sharpen properly. Its not a hard procedure, but to do it correctly certian procedures must be leanned and practiced.

This article will concern itself with the hand held knife and smaller hand chisels. These are mainly used to carve softer woods like Basswood and Butternut. An article on larger mallet driven tools used for hard woods will come out at a later date.

There are two basic tools used in sharpening your knife. The first tool is a stone. Its purpose is to shape the cutting surfaces. The second tool is a strop. Its use is to finely hone the cutting edge.

The term stone as used here is not and I repeat not a grind stone. To use such will simply eat away the metal of your knife and will not sharpen it. The only time a grind stone is used is in the construction of the knife during the manufacturing process.

The stones you will need can be of different tectures and makes, but they must all be of a fine grit. They can employ oil or water during the sharpening process. They must have a perfectly flat surface. They must also be cleaned so that the metal being removed from the knife does not clog the pores. They can be stone or diamond.

The time to use them is when you have a tool that has developed shoulders on one that has been knicked or dropped and perhaps the point broken. You can easily see the trail of a knick in a knife when carving. It will be a broken scratch in an otherwise clean and smooth cut. Point of concern here, knicks are the result of banging tools together without sheaths or covers. You will want to place the knife flatly on the stone and push it across the stone away from the cutting edge. You will reverse the direction of the tool on the return draw. You must remember never to flip the knife over on the cutting edge. Always lift the knife at the end of each push or draw. Lay it down again at the correct angle. If you flip the knife, you will blunt out the sharpening of the cutting edge. Continue this action until you have removed the knick on the shoulders and have maintained a very narrow wedged angle. The angle from the back of the knife to the cutting edge should be from 12 to 20 degrees. There should be very little roll from back to cutting edge. It should almost be flat.

If you have done the stoning correctly, you will have a proper angle and a burn like fuzz on the cutting edge. This is exactly what you want. The next step is the strop.

Flying Mallard Class  
With Pat Moore  
April 16,17, 18, 2004

Pat Moore, Kindred, ND, will conduct a flying mallard class in Bismarck on the weekend of April 16, 17, 18 (Friday evening, 6:30 – 9 pm, Saturday 8 am – 5 pm, Sunday 8 am - ~ 4-5 pm). The class will be held in Bob Pedigo's garage (or basement) located southeast of Bismarck. Since that Saturday is also our monthly meeting day, Bob is inviting club members to a potluck lunch on Saturday.

Pat is a very experienced carver specializing in ducks and geese. She has extensive background in habitat, having done backgrounds for displays in various museum dioramas.

The mallard duck with ~ 6 inch wing span in flying position will be mounted over some habitat.

Cost for the class will be \$55.00 which will include the blank.

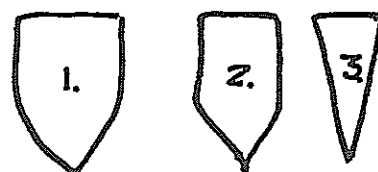
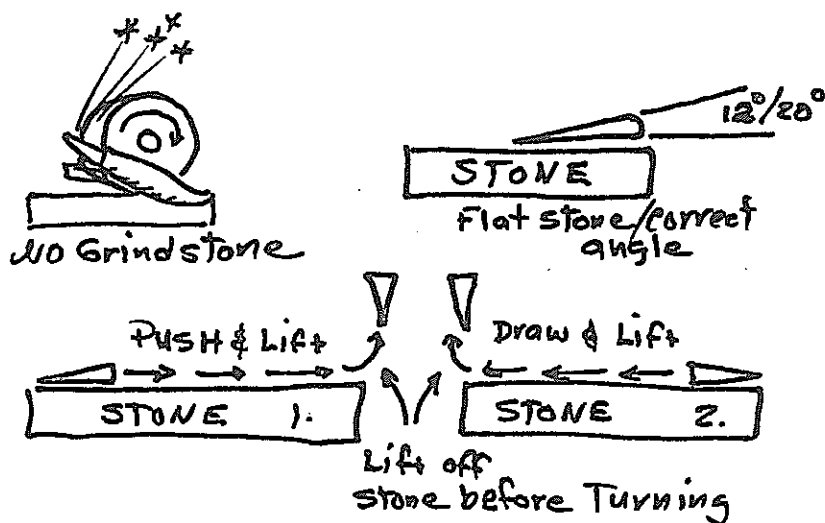
**Bring reference pictures of a mallard duck to the workshop.**

-----Tear here-----

Flying Mallard Class  
With Pat Moore  
April 16,17, 18, 2004

Send your registration form and fee to Frank Koch,  
Bismarck, ND 58503 by April 4, 2004.

Name \_\_\_\_\_  
Address \_\_\_\_\_  
City, State \_\_\_\_\_  
Zip Code \_\_\_\_\_  
Phone \_\_\_\_\_  
Email \_\_\_\_\_  
Amount included: \_\_\_\_\_



1. - No Shoulder
2. - No Chisel edge
3. - Yes correct angle  
12-20 degrees.

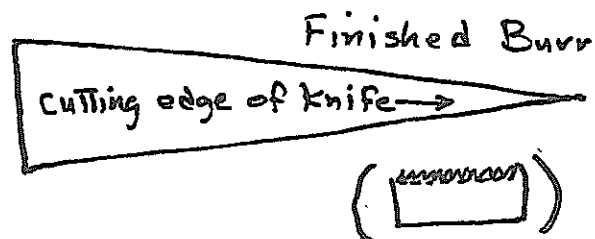
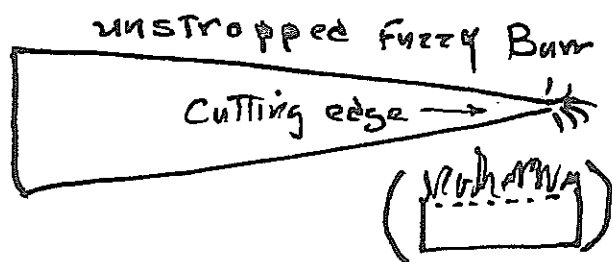
Special note, If you have one of the specifically designed sharpening wheels for wood carvers that has varying grits of sandpaper from 200 to 400 and even 600 installed on the wheel and it turns slow enough its okay. It will do the same as a stone and sometimes better once you understand how to use it. This is not the grindstone mentioned before.

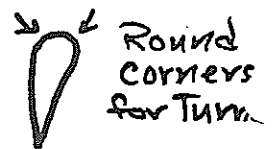
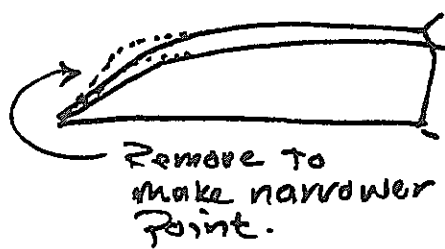
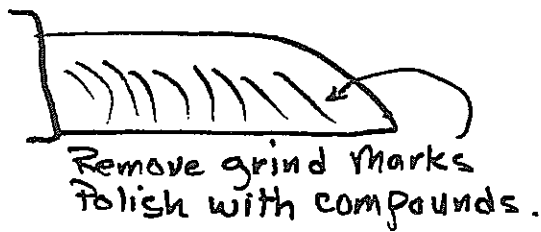
There are numerous designs for strops, but they all work the same and have two sides. The are leather. One side is unfinished and the other is slicked to a hard surface. Regardless of style, they must have a flat surface. The exception is the special sharpening wheel. You apply your compound to the rough side and stroke the knife the same as you did on the stone. Push and Lift and Draw and Lift. Keeping the angle at 12 to 20 degrees. You work one direction and turn. Do this until the fuzz like burr disappears. At this point you should have a sharp knife. Now you finish the job. Stroke the knife on the slick side of the strop several times. Do not put compound on this side. What you are accomplishing is to compress and align the remaining burrs into a tight line. Once this is done you have a very sharp knife.

When carving, stop every 15 or 20 minutes and strop your knife to bring the burrs back into line. Use both sides of the strop a couple of times. This will keep the knife sharp and you and your friends happy.

Why compounds, and what do they really do? A compound is a metal cutting agent. They are of the finest grits and polish the metal by removing all the larger cutting marks. There are a number of types of compounds. Some that I have are Zam (green) which sells for \$4.00 to \$5.00 for a 1/4 lbs. and Dremel Buffing Compound Sets which contain: Emery Cake, Tripoli, White Rouge and Red Rouge. They sell for \$5.00 to \$6.00 per four bars. In the above case, Emery is the roughest grit and Red Rouge is the finest. Check your catalogs for other brands and grits.

Remember that the more polished the sides of your knife is the smoother it will slice through the wood. In most cases there will never be need to sand any carving.





Another tip on sharpening is to polish away the grinding marks on the side of the blade. A mirror finish as close to it as you can come is the best for cutting. You can also remove part of the upper portion of the point. This will give you a narrower point for better turning cuts. Also round the corners of the back of the knife about half way back to the handle. When making turning cuts this part of the knife will not drag on the remaining wood and tear it apart.

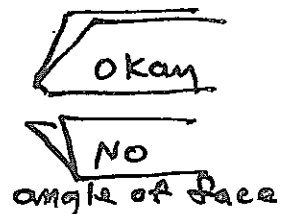
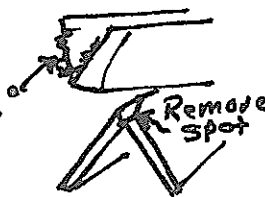
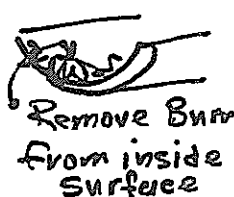
When purchasing new tools, they sometimes come pre-sharpened. Its up to you to make sure the tool is sharp. Many companies simply sharpen them to the desired degree or use a stone only. This will not serve your needs. You will have to get the strop out and work on such tools. Some do come pre-sharpened and you can appreciate that. But you should check the angle and use a little stropping anyway.

So far we have discussed knives, which are used most. We need to cover your chisels. Those with flat cutting surfaces are sharpened very much like the knife. The angle is closer to 20 degrees with chisels. You work out shoulders and knicks the same way. On rounded tools, you will need to roll the tool on the stones and strops. You need to maintain a smooth and similar arch on the cutting edge of the tool right on to the heel of the tool. If this differs, the tool will not cut straight and evenly.

You will also have to contend with the fuzzy burr. On the straight edged tools this will be no problem. However on the rounded tools such as the gouge, and V-tools you will need to strop the inside of the tool as you do on the outer edges. You can purchase or devise a round strop for gouges and get a square or angled one to fit the V-tools. You must remember not to slope the inner edges of gouges or V-tools. The edges must remain flat. When using gouges on V-tools its best not to over load them. Even a sharp tool will not function if over loaded. This means cutting deeper than the top edge of the tool. If its necessary take another cut instead of trying to do it in one.

The V-tool presents special problems in sharpening. Some like the face of the tool to angle back giving a more skewed angle. Others like it at 90 degrees. However you do not want the face to reverse. You also want to smooth a very small spot on the bottom of the V. This will let the tool slide through the wood. Not doing this will cause the tool to dig in and make a rougher cut. A little at a time is removed. Test the tool and if you need to take more do a little.

This is a rather short article on sharpening, but I hope it will give some of you a better understanding. I hope you will be able to sharpen tools with confidence.



## FEBRUARY 21, 2004 MEETING NOTES

1. Warren Schlecht reviewed the minutes of last meeting. They were approved.

2. Annual Show info. Registration for Pat Moore class with this newsletter issue. On Sat. Ev. there will be a Pot Luck Dinner. Meeting at Pedigo's. We need to establish the other classes for the show.

3. Treasurer's report is that we have \$3923.00 in Acct. We have received and paid for our ND Non-profit permit. We have also renewed our Post Office Box.

4. The newsletter will come out about the time of the next whittle-in. Can always use more materials.

5. Bank for carving available contact Ron Torgeson.

6. Dave Kingsbury has resigned as election chairperson. Feels he doesn't know members well enough to get them into office. We need this position filled.

7. Meeting Site. We have been looking for a permanent site. One that has come to light is the Horizon Middle School. A committee was selected to investigate this further after Apr. 5th.

8. It was ask why we couldn't hold the Annual Show in the Senior Center. No answer was available. We will check into this.

9. Arts Center. Frank reported that about 80 people showed up only one was against. There will be a final decision made on Apr. 17th.

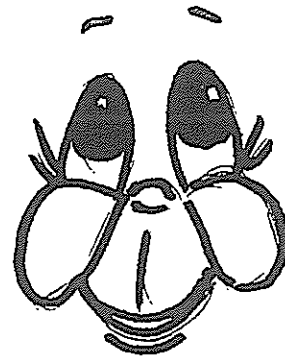
10. Bob Pedigo reported that Gary Pauser of Fargo will instruct a class on a wolf bust one week in March. Call Pedigo for info.

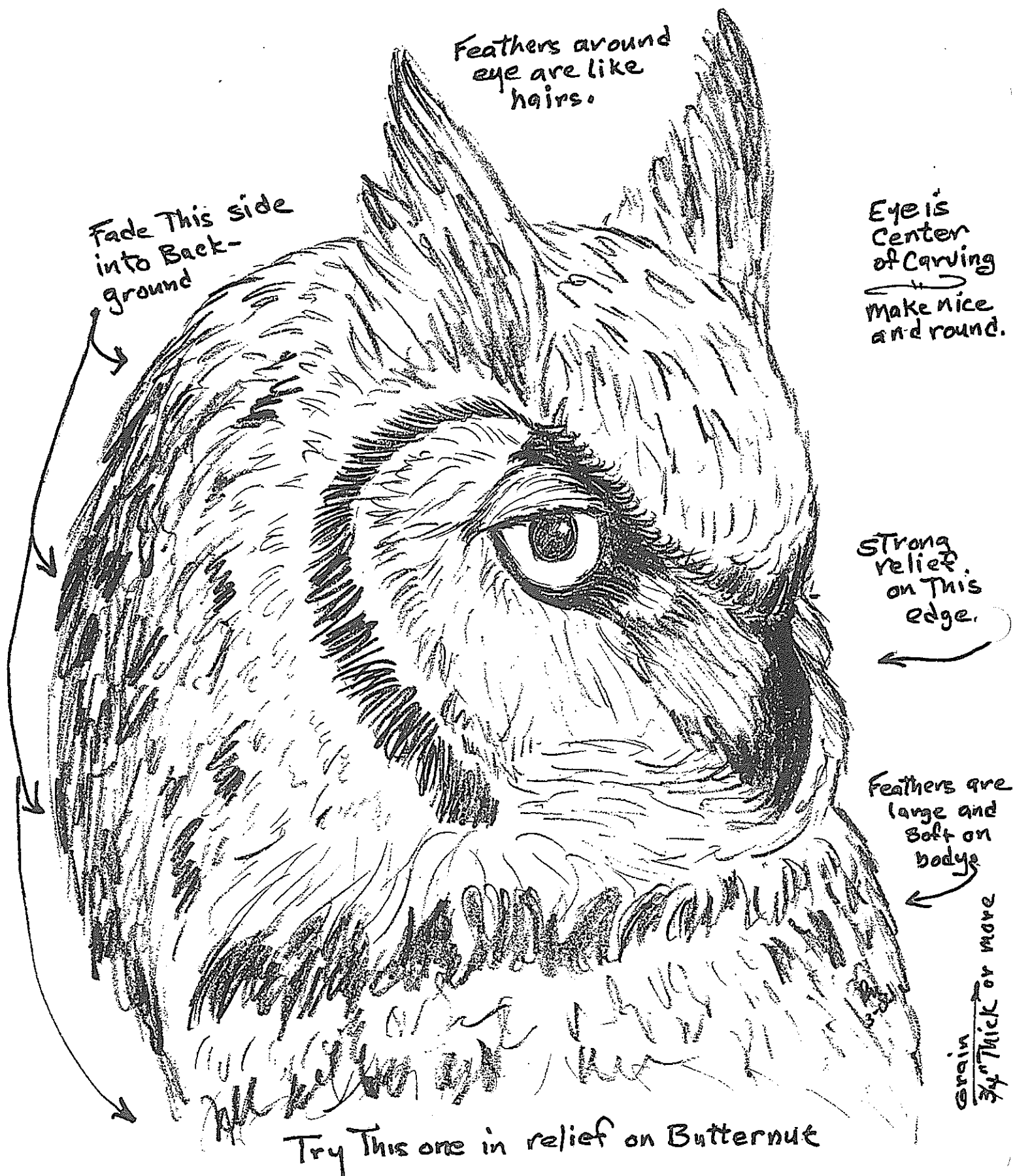
11. A taxidermy show will be held the 2nd weekend in March at the Doublewood. We are invited to buy a booth at \$50.00. Banquet costs \$18.00. Other meals extra. They charge \$2.00 to enter display room.

12. W. Schlecht had project of Chopping Block and Ax.

13. Bob Johnson was the lucky person in the exchange carving. He got a nicely carved caricature of a man.

Bob will have to supply the exchange carving for the next meeting.





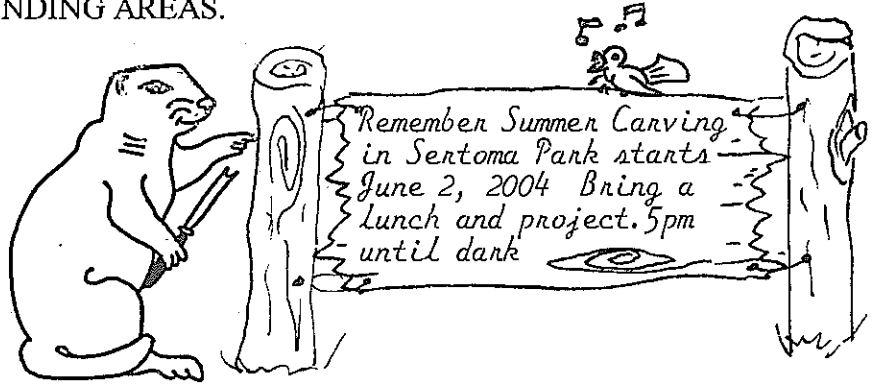
# THE CURLING CHIP

May/June 2004

THE NEWSLETTER OF FLICKERTAIL WOODCARVERS, BISMARCK/MANDAN,  
NORTH DAKOTA AND SURROUNDING AREAS.

## OFFICIALS AND EXECUTIVE BOARD:

President	Ed Horning
Past President	Mitch Olson
President Elect	Bob Pedigo
Secretary	Warren Schlecht
Treasurer	Ron Holtz
Membership	Stan Skarphol
Programs	Frank Koch
Property	Edwin Boger
Librarian	Perry Cook
Member at Large	Ed Horning
Member at Large	Ron Torgeson
Newsletter Editor	Robert Matzke
Asst. Newsletter, Labels	Sam Lacher
Asst. Newsletter, Mailing	Val Gabbert
Asst. Project Coordination	Jim Lindseth



THIS NEWSLETTER IS SPONSORED IN PART BY DAKOTA WEST ARTS COUNCIL. THE CONTENT  
HEREIN IS DEDICATED TO THE ART OF WOODCARVING, MEMBERSHIP BENEFIT AND ENJOYMENT.

WHITTLE-INS ARE HELD THE 1<sup>ST</sup> WEDNESDAY OF THE MONTH, SEPT/MAY FROM 7-9 PM. REGULAR  
MEETINGS ARE HELD ON THE 3<sup>RD</sup> SATURDAY OF THE MONTH, SEPT/MAY FROM 9-11 AM. MEETINGS  
ARE HELD IN THE DAKOTA ZOO, BISMARCK TRIBUNE DISCOVERY BLDG. LOCATED AT THE SOUTH  
WEST END OF SERTOMA PARK. SUMMER WHITTLE-INS, JUNE THROUGH AUGUST ARE HELD IN  
SHELTER # 4 IN SERTOMA PARK FROM 5 PM UNTIL DARK.

## FLICKERTAIL WOODCARVERS

P. O. BOX 7473

BISMARCK, NORTH DAKOTA 58507

### IT'S VACATION TIME:

Now that warm weather has arrived and the children are out of school, it's time to finalize all those plans you made last winter. I urge you to proceed. Make the most of this time of the year. It's only going to be here a short while. If you can take routes, short side trips, etc that will take you by carving events. There are museums and other places that harbor great carving examples. If you miss such opportunities, they will be opportunities you may never again get. You should also take along your carving tools and a few cutouts. No doubt there will be times that you will have time to carve.

### CHRISTMAS PARTY:

Our Christmas Committee has arranged for our 2004 Christmas Party and dinner. The proposal was submitted and voted on at a regular meeting to be held on December 18, 2004. A Social hour will start at 6:00 PM until 7:00 PM, with a buffet style dinner beginning at 7:00 PM. The cost of this dinner and event is only \$16.95 per person. The location will be the Kelly Inn, Bismarck, ND. This is a week before Christmas. There will be a carving exchange for those who carve and a gift exchange for those who do not. The gift exchange should be limited to not more than \$10.00 per gift. Each year this event gets better. It's one time of the year that you can really visit with members and spouses, girl or boy friends and maybe even both in some cases. There are few excuses for not being there. We expect to see you there and to have a good time together. Mark your calendars.

### FLYING MALLARD CLASS:

This was a very enjoyable class. Those who attended learned new techniques on habitat and making full diorama in miniature carvings. Everyone was well pleased with the class and took home a nearly completed ( carved and painted ) carving. Pat Moore was a good instructor giving each carver the attention they needed to keep proceeding. She offered tips that many had never before considered. The class was held at the Pedigo residence on April 16/18, 2004. See attached photographs of the project and members that attended. Pat also offered a Snowy Owl cutout and pattern that looks like a number one project.

The regular monthly meeting and carving project was also held during this time. Bob Matzke presented a 4-leaf clover pin carving project to those who attended the meeting only.

The pot luck meal was a real treat. We also had pizza on the last night. It was an enjoyable class and the Club thanks Pat Moore and the Pedigos.

### OUTREACH PROGRAMS:

Our members have reached out to others and offered carving training. During the month of April, Cliff Rime traveled to Cleveland, ND and demonstrated carving the leaf pattern that Bob Matzke had designed and presented to the club earlier. He provided several variations of the facial expressions. Most like the smiley face leaf. Cliff said there was 15 attendees. Ted Livesay of Garrison, ND also presented the leaf project to the Garrison Club. Same results. It's nice to see carvers expanding on a project. It shows growth and a higher level of experience.

### NEW BOOK PUBLISHED:

Rick Jensen, one of our Minnesota members has published a book on bark carving. Title is " Carving Tree Bark ". It is a nicely put together book. It has lots of illustrations and patterns. Anyone wishing to get into bark carving should seek out this book. It is published through Fox Chapel Publishing Co. Inc. and costs \$14.95 US.

### E-BOARD MEETING:

On March 20<sup>th</sup> the Executive Board met and discussed the following: Minutes of last meeting were read and approved.

There was a discussion on sending the newsletter to groups and organizations that do not display it. It was decided to review the mailing list and omit certain groups and organizations.

Treasurer Ron Holtz reported that the club has \$3,750.00 in the checking account.

Information on our cane display has been very positive. It is drawing a lot of interest from the public.

Our raffle needs donated carvings for prizes. Please do not wait to make your donation known. Let Ron Holtz know NOW... You need to tell him what the carving will be and it's estimated value. We can then proceed with the permits and printing of tickets. You do not need to turn in the carving until just before the annual show. Please help us on this. The funds raised are used for training and other club expenses.

Ron Holtz reported on the Live Art in Motion event held in Kirkwood Mall. He stated that the public was impressed with the carvings and showed a great deal of interest.

President Horning reported on the Arts Center ( Old Holiday Inn ) progress. Things are rolling along. Money now seems to be the main hang up. And like any political matter, many are tacking on riders to the program. Like a running track and other gym programs. But things are going well.

The Site Search Committee has been busy. They have a number of possible sites. Our contract with the Zoo is up this May and we need to be sure of where we want to be come Sept.

Nominations for officers was made. Bob Pedigo was nominated for President Elect and would accept if he could trade out from Property Officer. Edwin Boger stated that he would be willing to take over these tasks. The rest of the open positions were recommended to be filled with those presently in them.

The E-Board presented a letter of recognition to Bob Pedigo for his efforts to promote woodcarving and betterment of the club. Frank Kock ( not present ) also received a letter of recognition for his efforts working on the Annual Shows and Training. These two have done a lot for the club and are very deserving.

### REGULAR MEETING:

This meeting was also held on March 20<sup>th</sup>. The project was a Butternut chipped cross by Bob Pedigo. It was just the right size for the meeting time.

Nominations for officers was made and all mentioned above in E-Bd meeting were voted into position by membership.

The Christmas Party was discussed and voted on to be held on Dec. 18<sup>th</sup>, starting at 6 PM with a Social Hr. and Meal at 7PM. There will be a gift and carving exchange. Gifts to be limited to \$10.00.

A motion was made and voted on to make a extra charge of \$.25 per project at Whittle-ins and Meetings to cover the costs of coffee and cookies/rolls. These funds will be controlled by the Treasurer.

Bob Pedigo won the carving exchange, a very nice caricature carving from Bob Johnson. Bob Pedigo will provide the next carving for exchange.

### MAY WHITTLE-IN:

President Horning presented the project. It was a member of the ( Family Syngnathidae ) or Sea Horse. The Whittle-in will be the last event for the Club at the Zoo for the regular season. We now move to the Sertoma Park,

Shelter #4, on the first Wed. starting at 5PM. Bring a lunch and a project. This is a great time to exchange information with all the Snowbirds who have returned from the south. Sept. will be the first of the regular meetings for 2004.

### ANNUAL SHOW THEME:

The theme will be Lewis & Clark. This could be almost anything. We would like to have you display carvings on your table and on a special table for the theme. This will be the anniversary year for the event. Lets do a good job for the public. If you need ideas, please call any of the E-Bd members.

### QUOTE:

" You have to expect things of yourself before you can do them." ( Michael Jorden )

### CAUTION TO BARK & WOOD COLLECTORS:

Because there is a lot of interest in bark carving lately, this notice is given to those who may be collecting along waterways.

Be absolutely sure that you are on private land. Do not and I repeat DO NOT ENTER ONTO CORPS OF ENGINEERS PROPERTY to take, pickup, or disturb anything. By nature of CORPS rules anything could be considered prehistoric or of historic value.

CORPS rules/laws ( many which are not publicly published or clearly understandable ) are strictly enforced to the letter of the law. Because you didn't know or didn't intend to violate is no excuse. You will be charged federally. You do not want a federal crime and conviction on your life long record.

If you need to venture on to CORPS property, learn as much as you can about the rules. People in this area now have federal records as a result.

Please play it safe, collect only on private lands and have permission.

### QUESTIONS:

When did North Dakota become a state?

When did South Dakota become a state?

The Badlands in North Dakota were caused by erosion from what river?

### CHAINSAW CARVING:

Featured in this issue is one of our own members, Vince Bitz. Vince is a quiet, modest

and highly skilled carver who has in recent years ventured into the world of chainsaw carving. This past June 20, 2003 Vince was in Craig, Colo. Taking part in the Annual Chainsaw Carving Rendezvous. His piece was a Bald Eagle perched Over the Liberty Bell. Titled "Let Freedom Ring".

Vince says there were many skilled artists attending. Many were demonstrating and some of the work was unbelievable.

Chainsaw carving is not the art for the light of heart. You do not start with a piece of wood. NO SIR. It's a whole trunk of a tree. Its 10 to 15 feet tall and 3 to 4 feet in diameter. It can weigh close to a ton. You need scaffolds and ladders just to get to the top so you can carve.

The saws and tools utilized really put a strain on the muscles during the day. Vince's background allows him to remain in shape and has a very good understanding of the necessary tools.

Once you decide on a pattern and the form is beginning to show, there is real satisfaction and you get a personal high that is hard to explain.

Vince has completed many carvings in our area for towns, counties and citizens. Included are a few pictures of his work.

If you're interested in this form of carving art, feel free to visit with Vince.

Thanks for sharing this with us and you do great work Vince.....Ed.

## ANSWERS:

Both North and South Dakota were given statehood on Nov. 2, 1889.

The river which created the Badlands was the Little Missouri River.

## SALVAGED WOOD:

A tree must come down and you're thinking about salvaging the wood. You want to know if you can do it. My response is maybe.

Good carving wood is expensive so any salvaged wood is an avenue to check out. But you must first understand some concerns and answer a few questions.

What is the species?

Why is it being removed?

How large is it?

Does the law allow you to store salvaged wood on your property?

Do you have the proper tools?

Are you in good health?

Are you a patient person?

As a carver you will want to know the species. Woods like Basswood, Butternut, Cottonwood, Box Alder are some of the softer of the hardwoods and excellent for carving. They have tight even grain that holds details. Yet each is different from the others. Basswood is best when painted. Butternut has a grain that finishes very beautiful in natural color. Cottonwood is a gray to yellowish color and a little stringer than the rest. It works well and is plentiful. Poplar is a little harder. Box Alder often has colors that can add a lot to your carvings.

Turners and woodworkers would opt for the harder wood like, Walnut, Oak, Ash, Elm, Apple, and Olive. These species make super furniture and turned pieces.

When the pines are the species, its best to shy away unless you are a chainsaw carver. They are full of pitch and knots. They have hard and soft areas in the grain. If you have a proper saw, these species do make lumber.

You will want to know why the tree is being removed. If its dead, it will be easier to handle and won't need as much drying time. Watch out for bugs. They can be transported to other trees and even into your homes and can remain in your carvings. If they exist, you need to take care of them. If there was wind damage look for twists and splits. Damage is often evident well beyond the initial damaged areas.

If the tree is diseased, you could have problems. Laws often prohibit salvaging and storage of such wood. You're often required to dispose of every bit of diseased trees in a landfill. This is to protect the health of the remaining urban forests.

You might be allowed to debark the wood in some cases. Then it can be cut into lengths and stored. It may also be burned as long as it is wintertime. In some cities, I know for a fact that the Forestry Depts. send crews out just to inspect wood piles for prohibited wood. It is marked and you are forced to remove it or you can be charged.

You should also be alert for your own health. Molds and fungus that grow in trees can cause serious lung problems. So to avoid legal problems, check with your local governments first. For your own health wear a face dust mask when making sawdust or chipping away bark.

The size of the tree is of major importance to you. You will have to lift the chunks. Large trees require large tools. Large trees fall harder than small ones. They can crack driveway cement, cave in roofs and crush cars. Get help if you don't know how to fall a

tree. However, larger trees provide better pieces of wood for carvings. If the tree is cut down in the summer, remember it will be 3 to 4 times heavier than if in the wintertime. This is due to the sap.

I mentioned considering your own health before salvaging wood. This activity is not for the light of heart or unconditioned. It is darn hard work. Pulled muscles, strains, blisters and cuts are often associated with this work. Hospital visits are not uncommon. Always be in the best of health. Maintain a clear sharp mind. That means no drugs or alcohol before or while doing the salvaging. If you have health problems and still want the wood, hire someone to do it for you. You can ask for some pieces. Another point to remember is that you have to clean up and haul away all the unwanted limbs, chunks, bark, twigs and sawdust. The stump must come out and the area be cleaned up. When you hire someone, it is part of their job to clean up.

Last of all, are you a patient person? If not you have a real problem. Carving wood must be seasoned and properly dried. The recommended moisture content in good wood is from 8 to 12 percent. Most professional people figure that it takes a year to dry one inch of wood when stored. I'm not talking kiln drying now. If this is true it would take 2 years just to dry a 4 inch thick piece. And that is only after you have waxed the ends in the beginning. Without wax, the wood will split. You will need to split the wood into proper lengths and according to the grains and growth rings. The heart wood is to be removed. Removing the heart wood will prevent a lot of problems.

Once dried you should store the wood in a dry place allowing plenty of air flow around each piece. A point to remember is that change is constant. The rise and fall of humidity will affect the wood. A garage ceiling is fine or on shelves. Don't over load and keep dry.

An extra point, for some woods like Basswood, you need to remove the bark right away. If not done, fungus will develop and attack the wood discoloring it and finally rotting it.

Green wood can be carved, but it takes chemicals which are expensive. You are severely limited to size of workable pieces.

I have enclosed a few diagrams of the cuts you might want to make for better carving pieces. Should you still want to salvage wood and feel up to it, by all means go for it. You will have the satisfaction of knowing it's all yours. If not then look to the yellow pages for a local wood

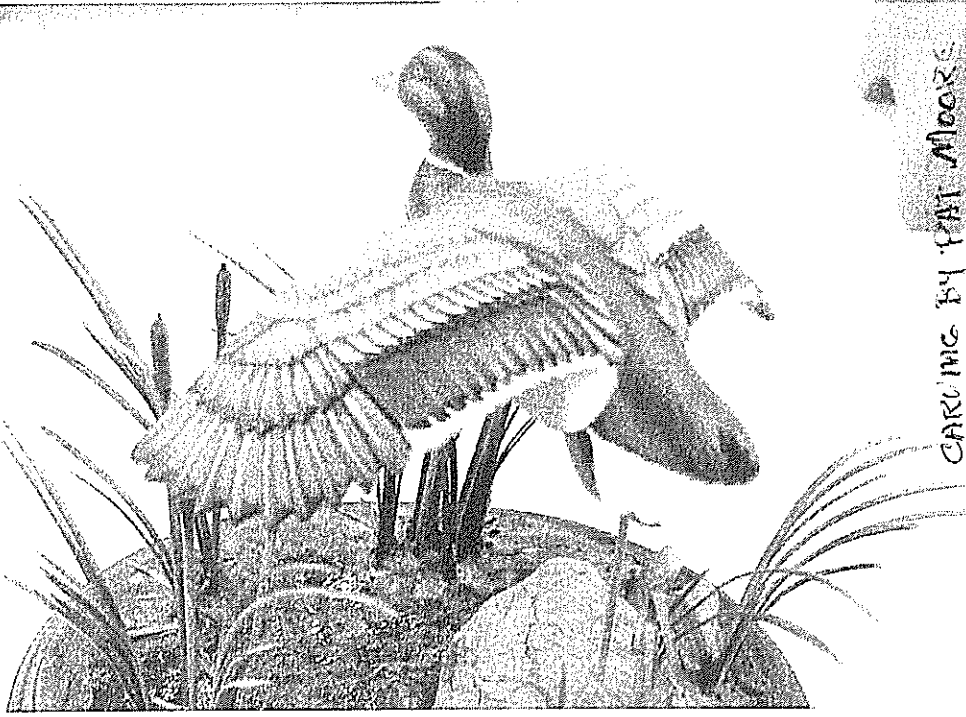
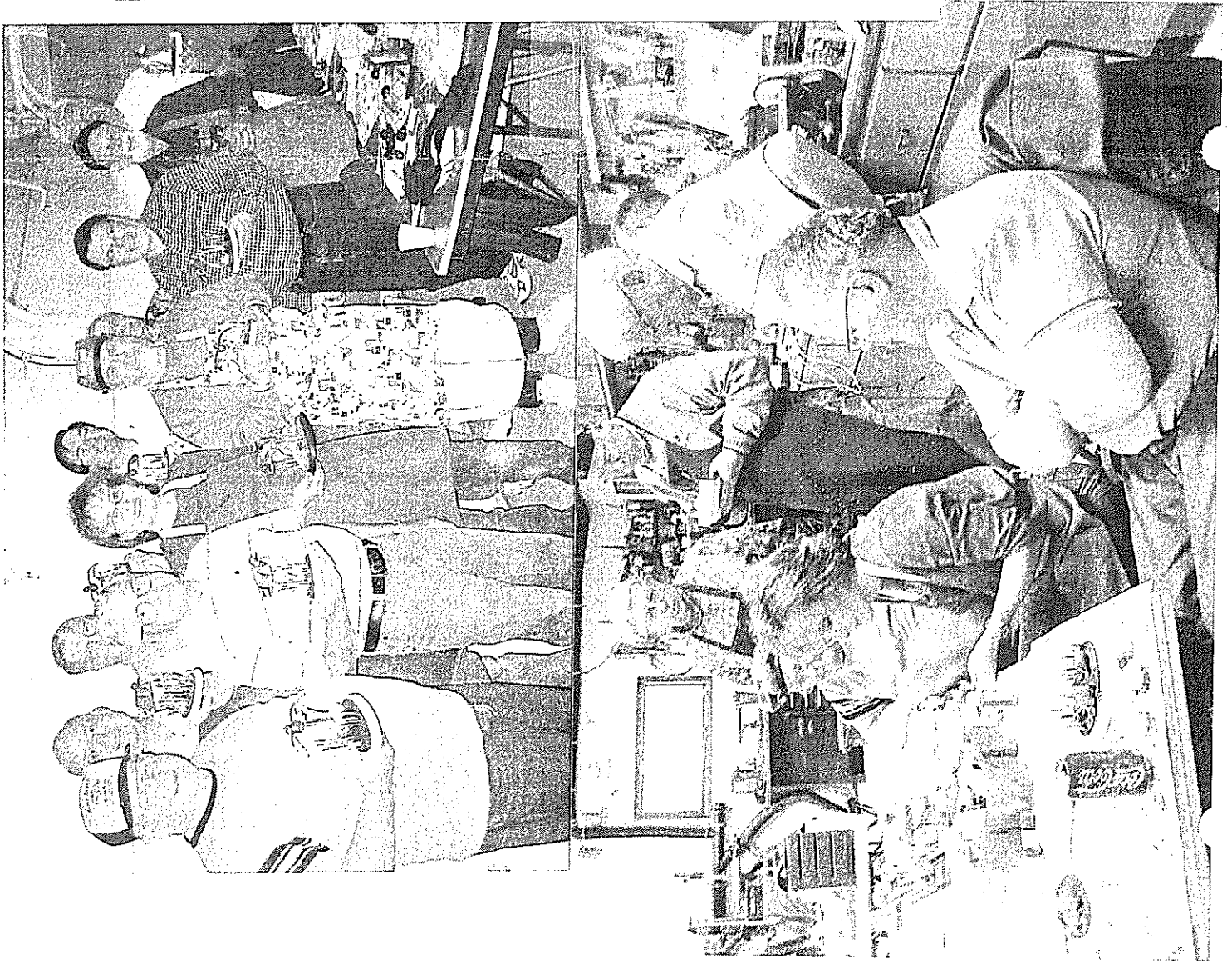
vender. They are there to support your needs.

#### SCHEDULE OF EVENTS:

- 5-5-04 Whittle-in, carving a sea horse with Ed Horning
- 5-15-04 No Meeting
- 6-2-04 Whittle-in at Sentoma Pk. Shelter #4
- 7-7-04 Same as above
- 8-4-04 Same as above
- Aug/04 Bob Matzke will host an event at his Washburn home. Proj. will be provided. Noon to dark. Bring a potluck dish burgers will be provided.
- 9-1-04 Whittle-in, const. driftwood bases with Ed Horning
- 9-18-04 Meeting, Proj TBA
- 10-6-04 Whittle-in, Proj TBA
- 10-16-04 Meeting, Proj TBA
- 11-3-04 Whittle-in, Proj TBA
- Nov/04 35th Annual Show at Double wood Inn, Bismarck, ND. Gary Franks inst. carving and painting full size Yellow Perch, plus other classes to meet needs of attending carvers.
- 11-20-04 Meeting, Carve a Sioux Warrior Bust with Dave Kingsbury
- 12-1-04 Whittle-in, Proj TBA
- 12-18-04 Meeting, Proj TBA  
Christmas Party at Kelly Inn  
Social Hr. 6pm Dinner 7pm  
Buffet style \$16.95 per person  
Carving and gift exchange
- 1-1-05 HAPPY NEW YEAR
- 1-5-05 Whittle-in, Proj TBA
- 1-15-05 Meeting, Proj TBA

He Died  
For us!





CARING BY PAT MOORE

Upper Left is a happy crew  
 Lower Left Pat Moore giving instructions  
 Above is what our projects are to look like  
 Photos by Bob Pedigo

## Finishing Wood Carvings

Once the carving is completed, many carvers have trouble deciding how to finish a wood carving. It seems the carving part is easy, but the painting or finishing is difficult for many people. Often a very good carving is finished in a manner which detracts from the carving; and the carver is dissatisfied. There are many ways to finish a wood carving, which can range from doing nothing at all to covering the wood completely with paint and a clear coat so that an observer wouldn't know it is wood underneath the paint.

**Which way is the "best" way to finish?** The answers are as varied as there are carvers. It depends on what look you are trying to achieve and what type of wood your carving is made of.

**Applying a Clear Finish Coat.** Next to no finish, the simplest method of finishing is to put a clear coat of wax or varnish on the wood and buff with some type of buffer. When I use the term varnish, I am referring to any number of clear liquid or spray finishes. Commercial names are Deft, Polyurethane, Minwax, etc. Several coats of finish and buffing are frequently needed. A clear coat is best used with a wood which is highly figured with either a grain pattern or some other unique feature of the wood, such as a burl, knot, or other natural feature present that you want to show off.

To begin, is the carving sanded smooth or does it have facets left from the tool marks from carving? If tool marks are present, then buffing after the first clear coat is applied must be done with something which does not cut the wood as sandpaper would do. Buffing, in this case, should be done with a soft rag, a stiff piece of crumpled paper, or a piece of wool (not steel wool). Successive coats can be applied, and buffed to deepen the finish and provide more gloss. If the carving has been sanded smooth, a useful technique when applying varnish is to allow the varnish to dry fully, then to sand that finish with very fine grit sandpaper. Often a piece of fine sandpaper which is nearly worn out from previous use is all that is necessary. When I apply a varnish or lacquer I sand between coats, and after the final coat I then rub with a very fine steel wool, followed by a coat of wax which is then buffed to bring back the luster.

**To Stain or Not to Stain?** Before applying a clear coat you may also use a stain to highlight wood grain and once dry apply successive coats of clear wax or varnish as explained above. When I want to apply color to a figured piece of wood, I frequently apply colored or clear waxes as appropriate. To darken an area of a carving, apply a dark wax only to the area to be darkened, and apply a clear wax to those areas which are to remain natural. One type of wax I use occasionally is shoe polish. There are many browns which enhance wood grain when applied directly to wood. There are cream wax shoe polishes which are colored any color of the color wheel, such as red, yellow, blue, green, white, etc. With knowledge of the artist's color wheel any color can be mixed from the basic colors of red, yellow and blue. The possibilities are endless. I have seen flowers carved from cottonwood bark, which has a natural reddish-brown color, with red shoe cream applied to the flower petals, and green shoe cream applied to the leaves and stems. This tints the carving without hiding the character of the wood.

Tinting is possible with acrylic paints thinned with water, or oil based paints thinned with solvent. The trick here is to make the paints thin enough that they provide

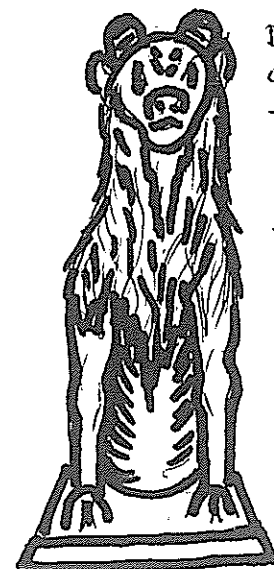
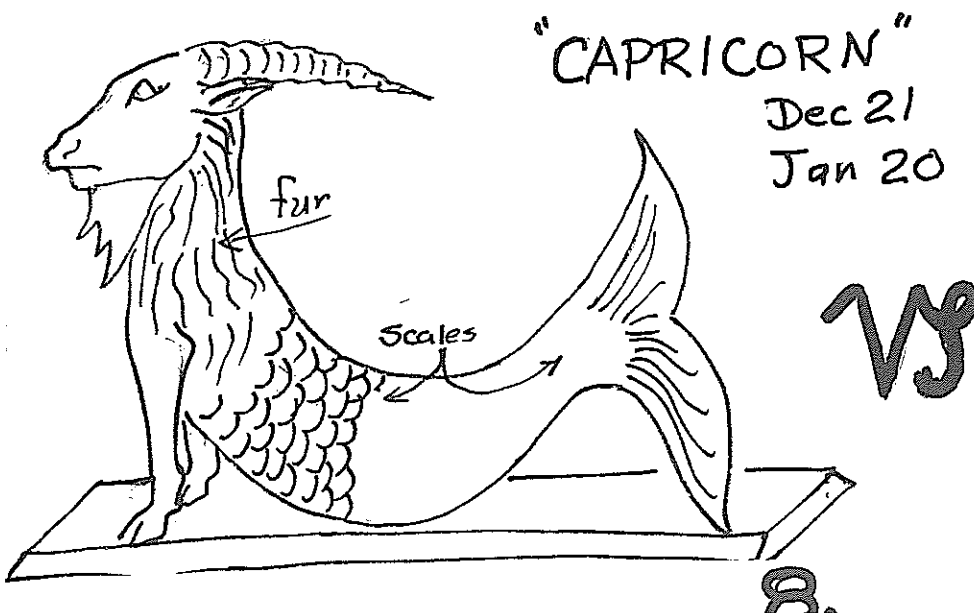
only slight staining, and not covering of the wood. Before applying any finish coat, make sure the stain coat is fully dried. (To get you thinking, our ancient ancestors even tinted things with ground up seeds, berries, fruits, roots, tree bark or certain stones finely ground because of their coloring capabilities.)

There are water based clear finishes similar to the solvent based varnishes and waxes mentioned here. Water base finishes usually take more time to dry between coats, but have the advantage of being non-toxic or less toxic than solvent based substances.

**What if You Want to Hide the Wood?** Many times the type of wood used has no prominent grain to show off, or the carver wishes to paint the carving to achieve an exact replica of the subject – a realistic fish carving is a good example. Paints are used to cover the wood and lead the viewer to believe they are looking at an actual fish which has been mounted by a taxidermist. In this case usually a base coat of some neutral finish is applied, such as grey or off-white, before the more realistic colors are applied. Painting here can be done with a brush, but a lot of carvers have begun using air brushes for painting fish and ducks. With practice, the finished paint job can not be determined to be different than the actual species colors. Air brush painting could be a subject of a whole different article. When coloring wood completely, a clear finish coat can be applied to protect the final pigmented paint layer, and the finish coat can also be selected to provide high gloss, or no gloss at all, depending on what it is you are trying to achieve.

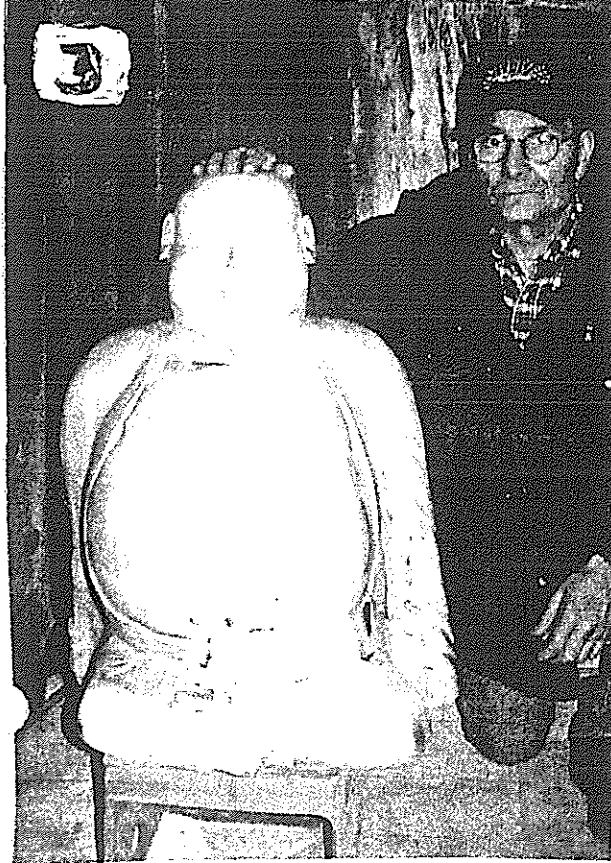
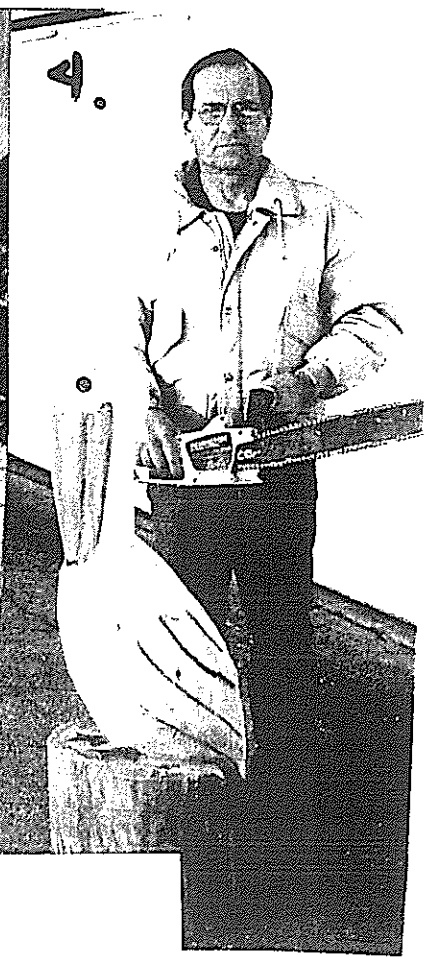
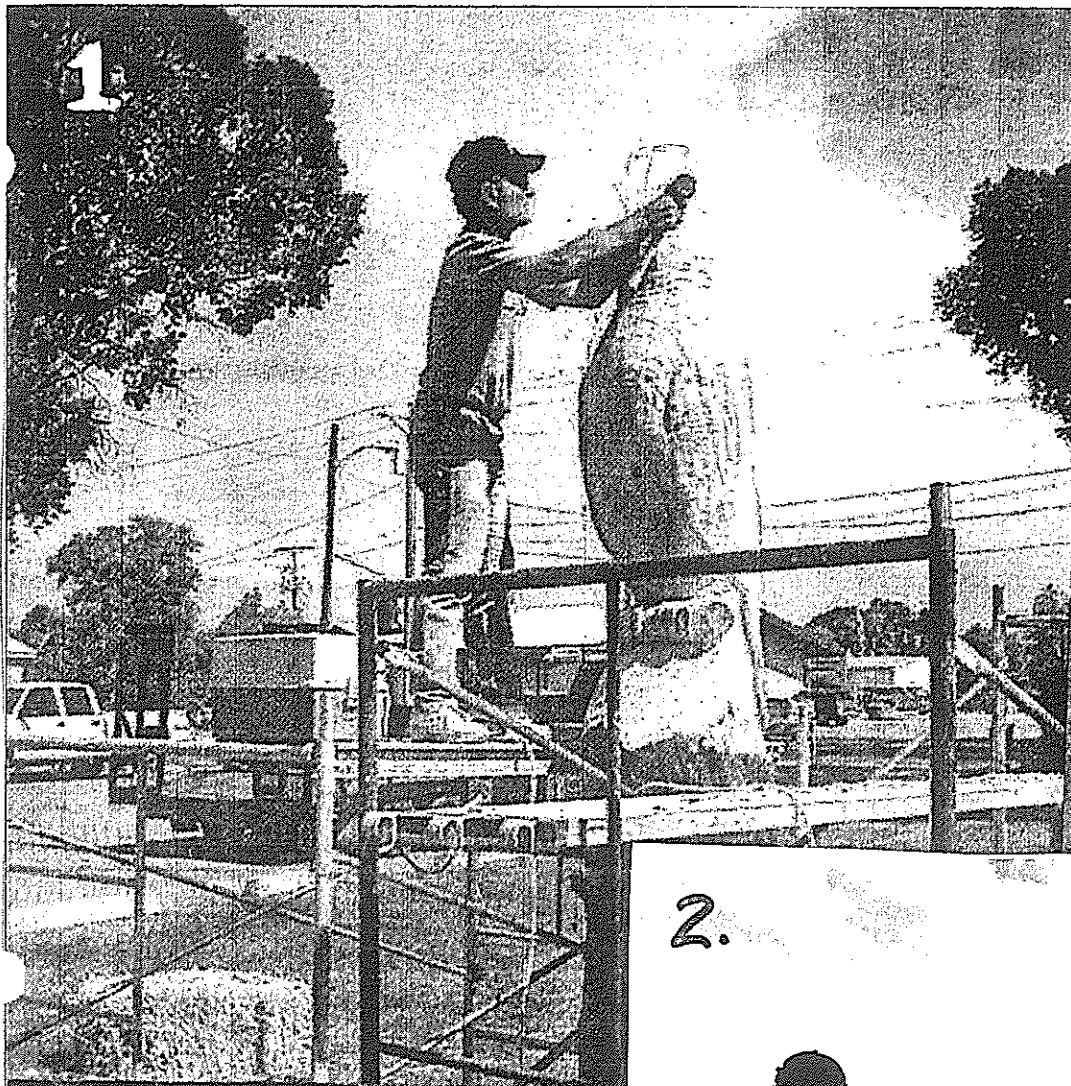
**Where Can You Purchase Paints, Waxes, and Clear Coats?** Most home centers or hardware stores have a supply of materials suitable for wood finishing. Clear liquid or spray finishes can be easily found at the Menards store in Bismarck or at any good hardware store. Waxes suitable for wood are also routinely found at these locations. Acrylic paints can be found at any craft supply store. Colors used for ceramics, or crafts, are fine to use on wood carvings if you are using a brush. Air brush paints should be used if you are planning to try air brushing. Air brush paints have finely ground pigments which are not as likely to clog the spray nozzle of an air brush. The regular ceramic or craft paints are not ground as fine and are very difficult to use in an air brush unless you are using a large diameter nozzle. I would recommend taking a course in use of an air brush, or at least have someone who is knowledgeable in it's use to give you a couple of pointers.

**The Choices are Many.** By trying them you can decide which one works best for you.



Draw your own pattern from this idea. Use Graph paper to maintain correct size.

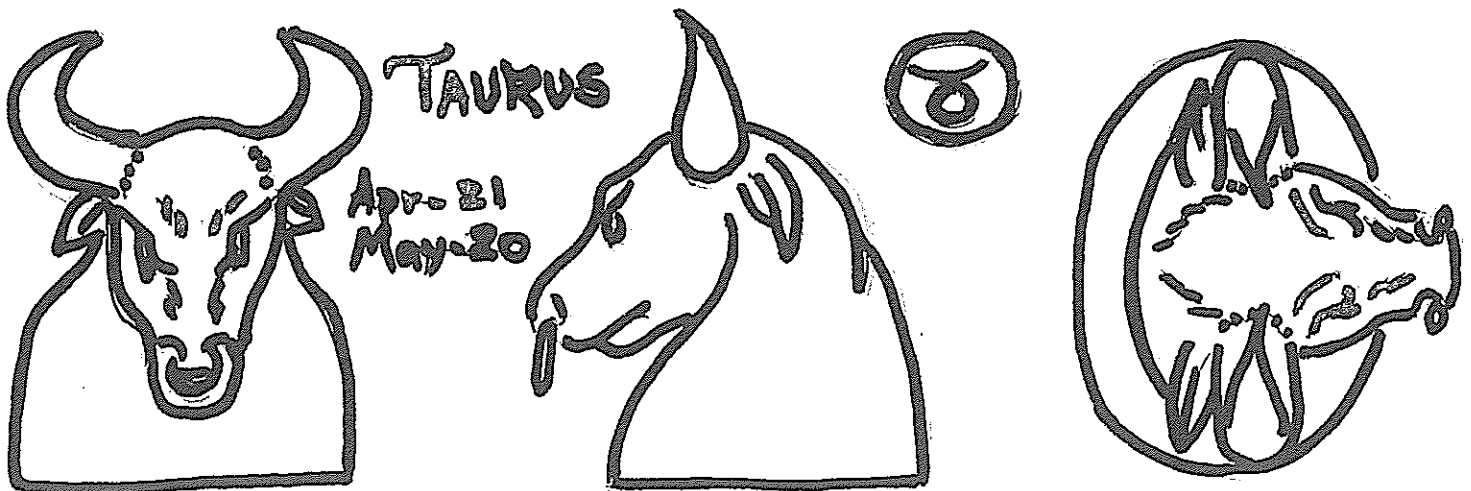
Half Gor  
Half Fish



No. 1. Vince on scaffold working on eagle head. No. 2. finished carving "Let Freedom Ring" No. 3. Buddha statue. No. 4. Pelican carving.



Photo supplied by Bill Buckingham, ( above is not Bill ) Bill's advice when salvaging wood is to park twice as far from the tree as it is tall. Never consider yourself a lumberjack because you live nearby trees. And just to be on the safe side, always borrow your buddy's truck.



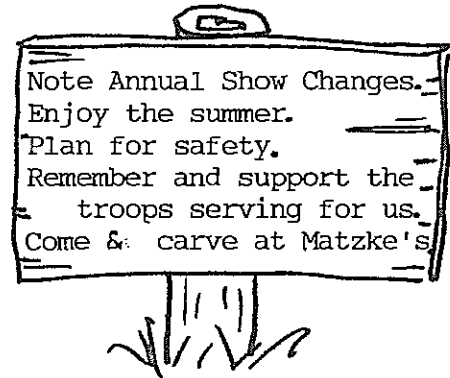
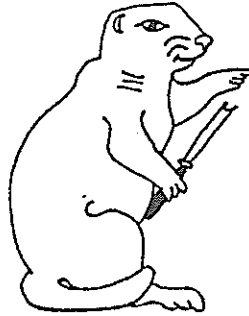
# THE CURLING CHIP

July/August 2004

THE NEWSLETTER OF FLICKERTAIL WOODCARVERS, BISMARCK/MANDAN,  
NORTH DAKOTA AND SURROUNDING AREAS.

## OFFICIALS AND EXECUTIVE BOARD:

President	Ed Horning
Past President	Mitch Olson
President Elect	Bob Pedigo
Secretary	Warren Schlecht
Treasurer	Ron Holtz
Membership	Stan Skarphol
Programs	Frank Koch
Property	Edwin Boger
Librarian	Perry Cook
Member at Large	Ed Horning
Member at Large	Ron Torgeson
Newsletter Editor	Robert Matzke
Asst. Newsletter, Labels	Sam Lacher
Asst. Newsletter, Mailing	Val Gabbert
Asst. Project Coordination	Jim Lindseth



THIS NEWSLETTER IS SPONSORED IN PART BY DAKOTA WEST ARTS COUNCIL. THE CONTENT  
HEREIN IS DEDICATED TO THE ART OF WOODCARVING, MEMBERSHIP BENEFIT AND ENJOYMENT.

WHITTLE-INS ARE HELD THE 1<sup>ST</sup> WEDNESDAY OF THE MONTH, SEPT/MAY FROM 7-9 PM. REGULAR  
MEETINGS ARE HELD ON THE 3<sup>RD</sup> SATURDAY OF THE MONTH, SEPT/MAY FROM 9-11 AM. MEETINGS  
ARE HELD IN THE DAKOTA ZOO, BISMARCK TRIBUNE DISCOVERY BLDG. LOCATED AT THE SOUTH  
WEST END OF SERTOMA PARK. SUMMER WHITTLE-INS, JUNE THROUGH AUGUST ARE HELD IN  
SHELTER # 4 IN SERTOMA PARK FROM 5 PM UNTIL DARK.

**FLICKERTAIL WOODCARVERS**  
**P. O. BOX 7473**  
**BISMARCK, NORTH DAKOTA 58507**

## ANNUAL SHOW INFORMATION:

Please be aware that the Flickertail Woodcarvers 35<sup>th</sup> Annual Show will be held on October 9 & 10, 2004 in the Trinity Lutheran Church, 502 N 4 St, Bismarck, ND.

We will be using the basement of the church. This is located on the Northeast corner of the Intersection of 3<sup>rd</sup> St. and Ave A. There is a parking lot available for our use.

We are planning on a Friday Evening table set up as usual. Bring your carvings and materials to the parking lot. There is a door that leads to an elevator which we are to use to get to the basement.

The Club has planned on catering lunches to the church during the show. However the Banquet will be held at the Doublewood Inn on Saturday Evening, ( October 10<sup>th</sup> ).

The Club is in the process of arranging for a block of rooms at a near-by lodging facility for your convenience. This site has not been confirmed at this date. By the time the registration forms are released, the Club will have confirmed the lodging site.

The registration forms will be released with the Sept/Oct issue of the newsletter.

## PERMANENT MEETING SITE:

Our Club has been looking for a permanent meeting site for a long time. After a great deal of research we believe that the Trinity Lutheran Church is the location.

We will be changing the Whittle-in date to the 1<sup>st</sup> Tuesday of the month instead of the 1<sup>st</sup> Wednesday. The Regular Meeting will remain the 3<sup>rd</sup> Saturday of the month.

We will have a parking area that has mobility impaired access via the elevator to the basement. This the carving area. It is well lighted and has storage and a tiled floor. It is large enough so that we can hold our annual shows here.

The Club is planning to begin holding meetings at the church starting with the September, Whittle-in. More information will be provided on this matter as we adjust into the new schedules and locations.

We are looking forward to some really great carving opportunities.

## LOCAL MEMBER PASSES AWAY:

It is with saddened hearts that we report, Robert Clooten passed away this past May. Bob liked to carve animals and always to

have a good visit with his friends at the meetings. He will be missed.

## CHRISTMAS PARTY:

Our organizational committee wanted to be sure that all members were reminded of the party. It will be held on December 18<sup>th</sup>, at the Kelly Inn. The address is 1800 N 12<sup>th</sup> St. Bismarck, ND. It is located about a block to the northeast of the Capital Bldg. The Social hour begins at 6 PM. Dining is at 7 PM. The meal will be buffet style and the cost per person is \$16.95. This isn't bad considering what you will be getting.

Please don't forget the carving and gift exchange. If you exchange a gift, there is a limit of \$10.00 cost.

Lets all attend and have a great time.

## HAZEN ARTS AND CRAFT SHOW:

This past June 5<sup>th</sup> & 6<sup>th</sup> was the date of the show. This organization sponsors a great art show. Its hard to believe the amount of talent in the area. Because of our participation in carving with their show, they have made a carving category. Bob Matzke entered two carved beavers by a beaver hut. He won a first place.

The Wood Turners demonstrated at the show and Cliff Rime demonstrated wood carving. Next year Bob Matzke will be demonstrating carving and wants to encourage you to carve and enter a piece in this show. If you need more information, please contact him. He will assist you. We would like to have numerous carviugs entered.

## THOUGHT FOR THE DAY:

Give a man a fish and it will feed him for a day. Teach the man to fish and you will make a liar out of him for the rest of his life.

## OMISSION:

When printing the May/June issue of the newsletter, a page was unintentionally left out of the article on Salvaging Wood. Please accept my apology. The page is included with this issue.

## AN AFTERNOON OF CARVING:

Bob Matzke has been lucky enough to secure permission from his spouse, Diane to hold another afternoon of carving at his Washburn home. The date will be Saturday, August 14<sup>th</sup>. The carving will begin around noon and go as long into the evening as necessary.

The project will be a figurine similar to the one shown on page 33 of the Carving Magazine. It will be approximately 8 inches tall. The evening meal will be a potluck style event. Bob and Diane will supply the burgers and hot dogs. Each of you can bring something for the rest to enjoy. There is no menu. Anything will be fine.

Please note if you have special dietary requirements, it will be up to the individual to take care of this matter.

Bismarck City water will be provided as the well water may not be agreeable for all.

It is ask that you do not bring any alcoholic beverages. We want to maintain a good margin of safety carving and a safe trip home.

Please contact Bob if you plan on coming by 7-31-04 so that he can have the correct number of basswood cut outs.

We will be carving from the decks, so it might be wise to bring a cap and sunscreen in addition to your tools. If it should rain, carving will be in the garage or basement.

If you don't know the way to Bob's place, let him know when you call and he will send you directions.

If you can buddy-up with another, it will save on gasoline costs.

Give this some thought and try to come, you will have a good time. Bob.....

### **SOMETHING TO THINK ABOUT:**

It's time to pull out! It's time to reevaluate our involvement. Every day there are news reports about more deaths. Every night on TV there are photos of death and destruction. Why are we still there?

We occupied this land, which we had to take by force, but it causes us nothing but trouble. Why are we still there?

Many of our children go there and never come back. Their government is unstable, and they have crazy leadership.

Many of their people are uncivilized.

The place is subject to natural disasters, from which we are supposed to bail them out. There are more than 1000 religious sects, which we do not understand.

Their folkways, foods and fads are unfathomable to ordinary Americans. We can't even secure the borders. They are billions of dollars in debt and it will cost billions more to rebuild, which we can't afford.

It is becoming clear... WE MUST  
PULL OUT OF CALIFORNIA.....

A friend sent me this article over the internet. I thought it was quite humorous and felt that you might enjoy it. No harm is intended to anyone from, or with ties to California.

### **SEA HORSE PATTERN:**

The sea horse pattern provided was from Ed Horning. He presented it to the Club on the last meeting. It was a lot of fun and he felt that everyone might enjoy it. Thanks for the pattern Ed.

### **PATTERNS NEEDED:**

Your Editor needs your assistance. If you have a pattern that you can share, please send a copy and instructions to Bob Matzke at Washburn, ND. 58577.

If you enjoy the patterns and materials in this newsletter, you will have to become involved to keep it going. Nothing will be turned down.

### **ANNUAL INTERNATIONAL WOODCARVERS FESTIVAL:**

This event is held at Lake Bronson State Park each year. The dates for this year are August 7-8, 2004. 8:30 Am to 8:00 Pm on Sat. and 7:00Am to 6:00 :Pm on Sun.

They have 24 categories in which you may enter. Ribbons will be given. They do not list any entry fees, but you can call Cammie Taylor at for more info.

### **HUMOR ( FOR MEN ):**

How many men does it take to open a beer? None, it should be opened by the time she brings it.

### **SCHEDULE OF EVENTS:**

- 7-7-04 Whittle-in Sertoma Park Shelter #4.
- 8-4-04 Whittle-in Sertoma Park Shelter #4.
- 8-14-04 Carving at Matzke's Noon until ? 8" figurine, Bring a potluck dish.
- 9-7-04 Whittle-in 7-9PM Trinity Lutheran Church, Driftwood bases with Ed Horning.
- 9-18-04 Mtg. Trinity Lutheran Church Proj. TBA 9-11AM.
- 10-5-04 Whittle-in 7-9 PM. Trinity Lutheran Church, Proj TBA

# SCHEDULE OF EVENTS CONT.

- 10-9 & 10-04 35th Annual Show at Trinity Lutheran Church Banquet on 9th at the Doublewood Inn.  
GARY Franks Instructs carving Yellow Perch.  
Other classes TBA
- 10-16-04 Mtg. 9-11 AM, Proj. TBA
- 11-2-04 Whittle-in 7-9PM.Proj. TBA
- 11-20-04 Mtg. 9-11 AM. Proj.Sioux Warrior plaque with Dave Kingsburry
- 12-7-04 Whittle-in 7-9PM Proj.TBA
- 12-18-04 Mtg. 9-11AM Proj. TBA  
CHRISTMAS PARTY at Kelly Inn  
Social Hr. 6PM Dining 7PM Carving/Gift Exchange.
- 12-25-04 Enjoy Christmas
- 1-1-05 Happy New Year
- 1-4-05 Whittle-in 7-9PM Proj,TBA
- 1-15-05 Mtg. 9-11AM Pro.TBA

## CLUB RAFFLE:

If you volunteered a carving as a prize, now is the time to get it done and delivered to Ron Holtz. We can use the finished ones for TV releases. If you need time, you have until the show.

We should be getting tickets soon. When we do, try and sell as many as you can. With money getting tight and more so every day, we will need all we can muster to keep our Club running smooth.

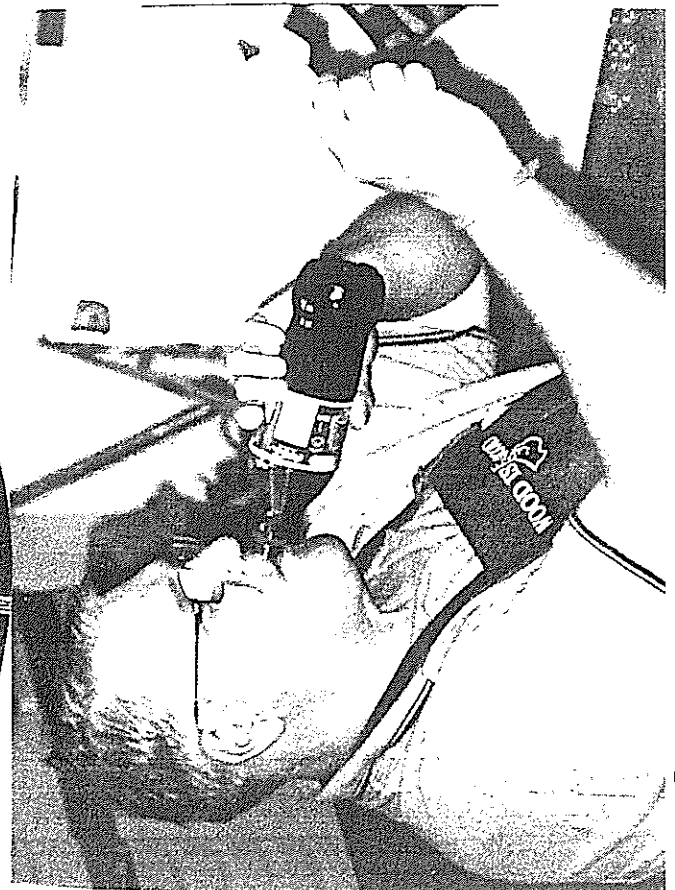


Frank Koch - WORKING hard.



Pat Moore/Warren Schlecht - I'd that!

W. PROTON LEON MALLARD CLASS



Perry Cook - I'll drink to that!

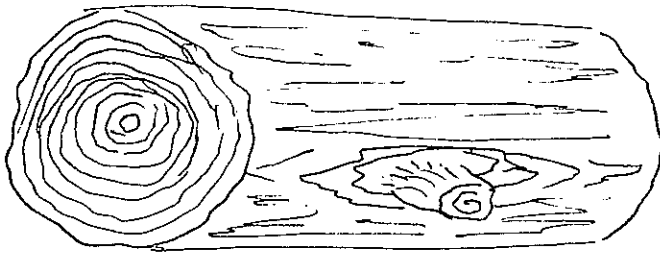


Fig. 1.

Fig. 1. Cut the logs into handling lengths. Not more than 2 ft. long. Try to get them atleast 1 ft. thick. Avoid knots, limbs, crotches and splits. Seek out straight clean logs.

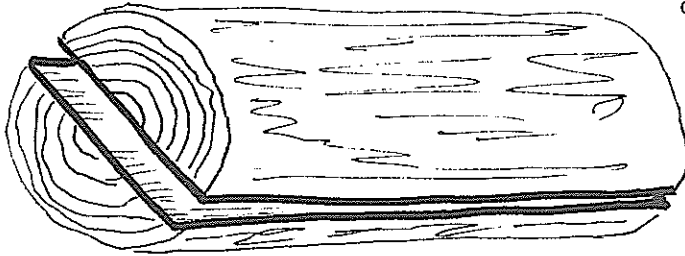


Fig. 2.

Fig. 2. On some larger logs, you can split them down the center so they'll handle easier. You can do this with a chainsaw too. It will make a cleaner cut. However, there will be lots of sawdust.

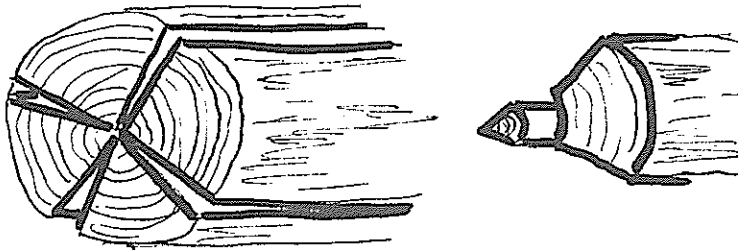


Fig. 3.

Fig. 3. Quartering is a commonly used method. You'll end up with a reasonable chunk for carving. This method also lets you remove the heart ( core ) easier. A log splitter would come in handy for this. But a sludge hammer and wedge will work.

Note: You will want to remove the heart wood ( core ) as not doing so increases the chances of having the log split. Remember all splits radiate out from the heart of the log. Commonly called checks.

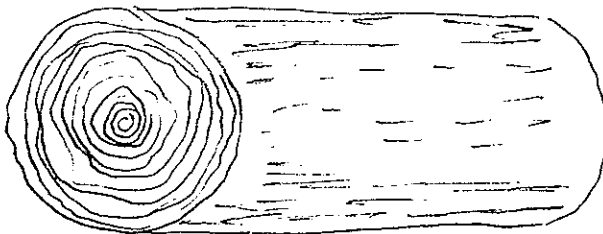


Fig. 4.

Fig. 4. This example shows the perfect log and how it dries. You will have to wax the ends so that drying is an even process from the bark side to the center only. Use regular was. Put on ends while hot. Paint on about 1/8 in. thick. This should be enough to seal the ends.

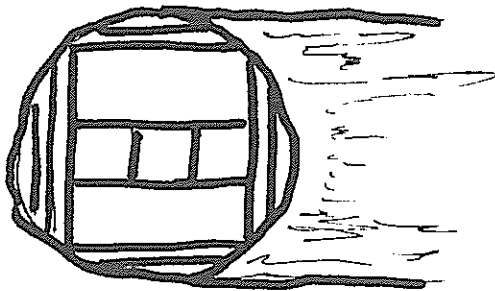


Fig. 5. Fig. 6. ( Below)

Fig. 5. This is an example of how the log can be sawed. The slabs can be made into boards. If done right, you'll have two large good carving chunks and two rather square chunks that work for carving. Discard the heart wood. You can wax the ends and stack for drying with stickers between the individual boards/chunks of wood. Store the wood on a shelf where it is always dry. The stickers are small boards used to increase air flow.

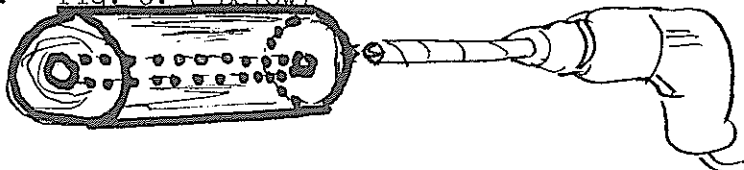
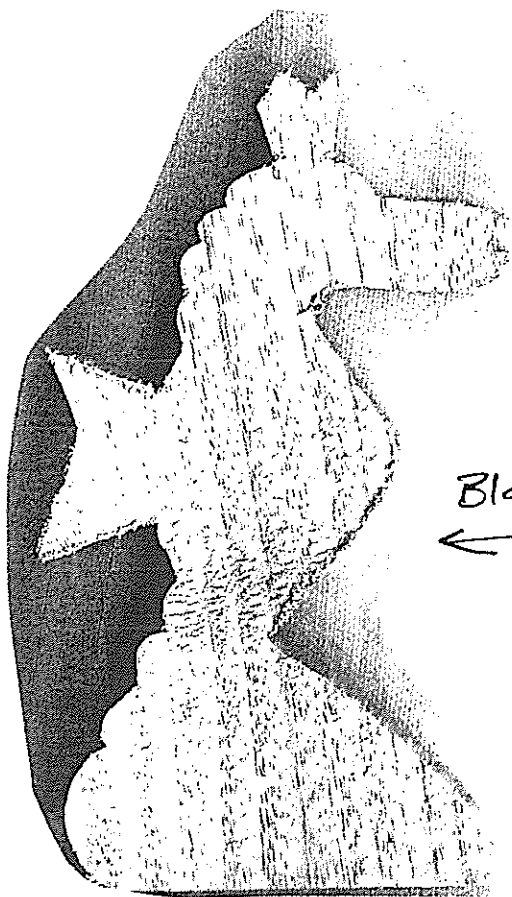


Fig. 6. Drill out the core and dry. Wax ends.



Blank

This is the ED HORNING Sea Horse pattern. You can trace it onto 1 inch basswood if you plan on painting it. If it is to have a natural finish, use different woods.

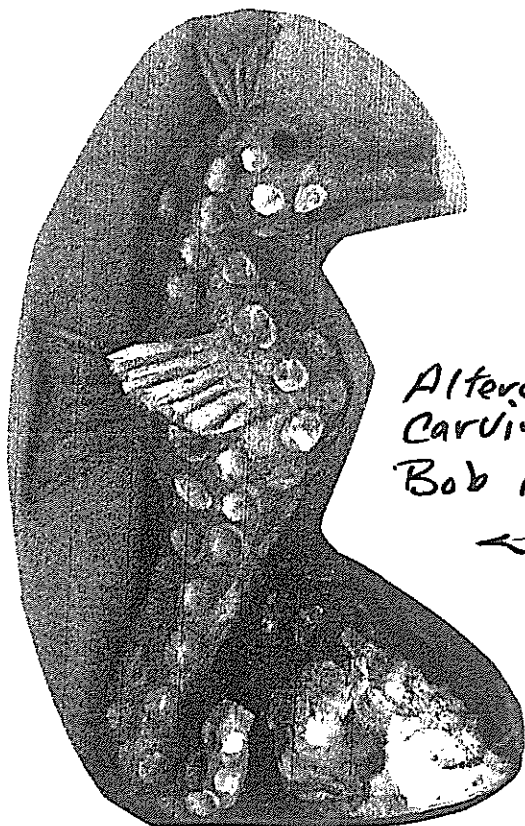
You can also use thinner sheets of wood and make reliefs to hang on walls or trees.

You will need regular gouges and knives to complete this project.

Special attention should be given to the mouth and rear fin areas due to the grain of the wood. These are weaker areas and could split off.

Below you have a carved version by Bob Matzke. There is a slight alteration to the pattern. Bob added two side fins and made the texture pocked. He drilled a small hole into the mouth and inserted a small dowel ( glued ) for strength.

Bob painted his sea horse orange with a tint of blue in the base of the pocks. It took a bit of extra work, but the project looks quite nice. The piece is sealed with Deft.



Altered Carving by Bob Matzke

#### HUMOR:

Women will never be equal to men until they can walk down the street with a bald head and a beer gut, and still think they're sexy.

#### NEW ROCKFORD STEAM THRESHERS

The Flickertail Woodcarvers have been invited to attend this event on Sept. 18 & 19th to conduct demonstrations and displays of woodcarvings. Ron Holtz and Ed Horning are attending and would like to invite anyone that is interested to go along. Contact them if interested.

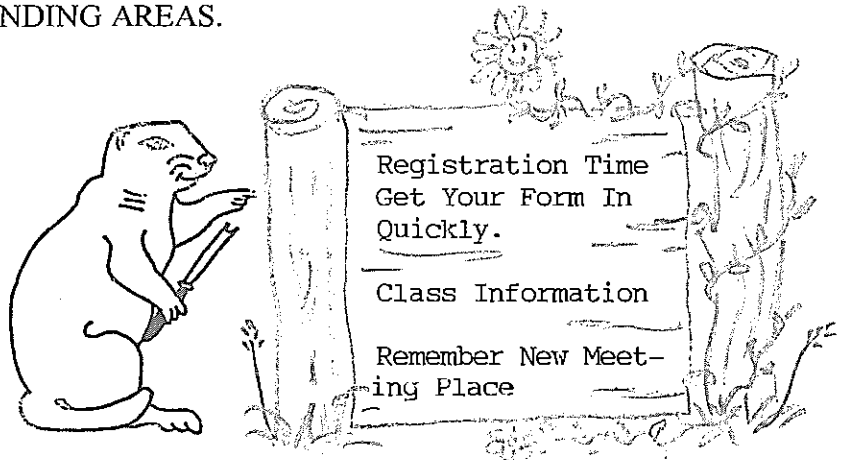
# THE CURLING CHIP

Sept. / Oct. 2004

THE NEWSLETTER OF FLICKERTAIL WOODCARVERS, BISMARCK/MANDAN,  
NORTH DAKOTA AND SURROUNDING AREAS.

## OFFICIALS AND EXECUTIVE BOARD:

President	Ed Homing
Past President	Mitch Olson
President Elect	Bob Pedigo
Secretary	Warren Schlecht
Treasurer	Ron Holtz
Membership	Stan Skarphol
Programs	Frank Koch
Property	Edwin Boger
Librarian	Perry Cook
Member at Large	Ed Homing
Member at Large	Ron Torgeson
Newsletter Editor	Robert Matzke
Asst. Newsletter, Labels	Sam Lacher
Asst. Newsletter, Mailing	Val Gabbert
Asst. Project Coordination	Jim Lindseth



THIS NEWSLETTER IS SPONSORED IN PART BY DAKOTA WEST ARTS COUNCIL. THE CONTENT  
HEREIN IS DEDICATED TO THE ART OF WOODCARVING. MEMBERSHIP BENEFIT AND ENJOYMENT.

WHITTLE-INS ARE HELD THE 1<sup>ST</sup> TUESDAY OF THE MONTH, SEPT/MAY FROM 7-9 PM. REGULAR  
MEETINGS ARE HELD ON THE 3<sup>RD</sup> SATURDAY OF THE MONTH, SEPT/MAY FROM 9-11 AM. MEETINGS  
ARE HELD IN THE BASEMENT OF THE TRINITY LUTHERAN CHURCH, CORNER OF AVE. A AND 3<sup>RD</sup>  
STREET. SUMMER WHITTLE-INS, JUNE THROUGH AUGUST ARE HELD IN SHELTER # 4 IN SERTOMA  
PARK FROM 5 PM UNTIL DARK.

**FLICKERTAIL WOODCARVERS**  
**P. O. BOX 7473**  
**BISMARCK, NORTH DAKOTA 58507**

## **ANNUAL SHOW INFORMATION:**

Please be aware that the Flickertail Woodcarvers 35<sup>th</sup> Annual Show will be held on October 9 & 10, 2004 in the Trinity Lutheran Church, 502 N 4 St, Bismarck, ND.

We will be using the basement of the church. This is located on the Northeast corner of the Intersection of 3<sup>rd</sup> St. and Ave A. There is a parking lot available for our use.

## **PERMENANT MEETING SITE:**

Our Club has been looking for a permanent meeting site for a long time. After a great deal of research we believe that the Trinity Lutheran Church is the location.

We will be changing the Whittle-in date to the 1<sup>st</sup> Tuesday of the month instead of the 1<sup>st</sup> Wednesday. The Regular Meeting will remain the 3<sup>rd</sup> Saturday of the month.

We will have a parking area that has mobility impaired access via the elevator to the basement. This the carving area. It is well lighted and has storage and a tiled floor. It is large enough so that we can hold our annual shows here.

The Club is planning to begin holding meetings at the church starting with the September, Whittle-in. More information will be provided on this matter as we adjust into the new schedules and locations.

We are looking forward to some really great carving opportunities.

## **REPEAT REMINDER:**

The above two paragraphs are repeats from the July/Aug Issue. But they serve as an important reminder of where our Annual Show will be and just where and when we will be holding our whittle-ins and meetings in the future.

## **IN THIS ISSUE:**

This issue will deal with mostly registration for our 35<sup>th</sup> Annual Show and the classes that will be presented. The issue is being sent out a little earlier as there has been a date change reference the show. It was originally scheduled for November, but we have had to reschedule to October 9 & 10, 2004. This was a positive move as it provides us with more stable weather. Plus the fact that we have recently secured a new home for the club. The extra few days hopefully will give you the time to schedule in your vacation for the show.

## **REGISTRATION FORMS:**

Enclosed you will find the show registration form. Be sure to complete the required information, select the classes you wish to take and return the form along with your remittance to Frank Koch, Bismarck, ND by September 25<sup>th</sup>.

## **THE CLASSES:**

The featured class is Carving a Perch with Gary Frank. This class will be held on October 8-9-10, 2004. The cost is \$75.00 which includes the blank. The Friday class will be from 8am to 5/6pm. The Sat/Sun classes will be from 8am to 11:15 am. You will need regular hand tools, sand paper and painting materials with a water container and paper towels. If you plan to use power tools, you MUST bring and use a dust box. You can use an air brush if you have one. **TAKE NOTE ON THIS CLASS. YOU HAVE TO COMPLETE A SPECIAL REGISTRATION FORM AND SEND IT ALONG TO FRANK KOCH.**

We are presenting two additional classes for carvers and one for non-carvers. All of these classes run both Sat/Sun. The Registration fee is \$20.00 and you have to purchase the blanks or materials. Nancy Larson blank costs \$15.00, Gary Paulson blank costs \$20.00 and Material for Joan Meredith non-carving class costs \$5.00. You will find descriptions of the classes on the attachments else where in this issue.

## **LODGING:**

Please take note of the lodging arrangements. We have a block of rooms at the Days Inn, which is just south of the Doublewood Inn where we used to be located. The costs are reasonable. You must contact the Inn by Sept. 20<sup>th</sup> to reserve a room. The number is 701-223-9151.

## **PARKING RESTRICTION:**

We do have one parking restriction, We can not park in the parking lot on Sunday Morning. This shouldn't be too great of an impact as only those in the classes really need to be there. There should be plenty of street parking. I would expect that if you or the family was to attend church, you could use the parking lot with the churches blessings.

## **CLUB RAFFLE TICKETS:**

The raffle tickets are ready to be distributed and sold. We have a number of good prizes. We ask that you try and sell some tickets and perhaps purchase some for your self. The funds are a major source for classes and club expenses. Ron Holtz will be contacting you with information about the raffle and selling tickets in the very near future.

#### **ACANTHUS CARVING CLASS:**

The Red River Valley Wood Carvers Club has arranged for Hans Sandom to put on a Acanthus carving class. If you ever wanted to do an acanthus piece, Hans is the instructor you want. He is nationally known and a very good instructor. This is a weeklong class. If you are interested contact Bob Lawrence at Also see attachment.

#### **NEWSLETTER VIA E-MAIL:**

Some members have expressed an interest in receiving their newsletter via e-mail. If you wish to do so, please complete and return the attach mailer.

#### **CARVING DEMONSTRATIONS:**

On the 21<sup>st</sup> of May, Stan Skarphol conducted a carving demonstration at the Terrace Center here in Bismarck, ND. This was for elderly persons. Stan did a fine job and has been ask to come back again on June 21<sup>st</sup>. Stan is in charge of our Senior Program and does a good job.

On June 30<sup>th</sup> Bob Pedigo demonstrated for the Valley View Heights Senior Center, Bismarck, ND. Bob sparked the interest of several residents. They want to become involved in carving. Bob also demonstrated in Washburn, ND for the Lewis & Clark Days at the new Visitors Center.

#### **CARVING AT BOB'S PLACE:**

On Aug. 14<sup>th</sup> nine carvers enjoyed carving figurines with Bob Matzke at his rural Washburn, ND home. Everyone brought a pot luck dish in support of the grilled burgers that the Matzke's provided. Bob provided a cutout that could be carved into a number of pieces. Examples were, religious female, Greek lady, and Indian male or female. Bob has a very large deck, but everyone crowded onto one end and if the noise of laughter and chatter was a sign, they had a good time. Food was plentiful and good. Ron Holtz was heard to say, Boy its really hard

to rough it up here. As he was patting his full belly and smiling ear to ear.

#### **CANES:**

If its not too much to ask, could you all bring your canes to the annual show. We would like to display them once again. Make sure that you have your name on the canes. The display at the Library went so well, we wanted to give the public one more chance.

#### **LEWIS & CLARK THEME:**

When you carve and display your piece for the Lewis and Clark showing, could you if possible reference it to some part of the event history or time period. A small note attachment would be great. Example, Figurine dressed in the clothing of the time, the note could state that these were the clothes worn by the keel boat men or those who traveled the shores hunted for the rest. If you carve a fish, then it could be part of what they ate along the route.

#### **SCHEDULE OF EVENTS:**

An updated schedule of events is not available at this time due to changes in meeting dates. We will have a corrected and updated list for the next issue.

#### **MORE ABOUT E-MAIL NEWSLETTER:**

If you request the e-mail version, it will be a scanned version. It will include all test and photos plus patterns. Give this some thought. It could save the Club some postage.

#### **SMILE AWHILE: ( Trueisms )**

I don't do drugs. I get the same effect just standing up fast.

I love being married. It's great to find that one special person you want to annoy for the rest of your life.

Don't argue with an idiot; people watching may not be able to tell the difference.

# 35<sup>th</sup> Annual Flickertail Woodcarving Show

## AGENDA

October 9 & 10, 2004

Gathering Room, Trinity Lutheran Church Basement

Corner of Avenue A and 3<sup>rd</sup> Street

Bismarck, ND

### *Theme: Lewis & Clark Expedition*

The Flickertail Woodcarving Club is pleased to have you participate in a fun filled weekend of learning, sharing and camaraderie. We encourage you to carve something that was included in the notes of Lewis & Clark. It would be neat if you could include a copy of the page where is item is included.

## AGENDA:

**Friday:** Setup: 6:30 - 9:00 pm

**Saturday:** Setup: 7:30 - 11:00 am

Workshops: 8:00 - 11:15 am

Brunch: 11:15 am – noon, Luther Hall

Exhibits: open to the public, noon - 5:30 pm

Social Hour: 5:30 - 6:30 pm Doublewood Inn, Senate Room

Banquet: 6:30 Senate Room, Doublewood Inn

Exchange of carvings and doorprizes

**Sunday:** Workshops: 7:30 - 11:15 AM

Brunch: 11:15 am – noon, Luther Hall

Exhibits: open to the public, noon - 4:30 pm

Drawing for raffle prizes

<<< Please **DO NOT** park in the church parking lot on Sunday morning.>>>

**NOTE: All meal costs are included in registration fee.**

\*\*\*\*\*

Rooms are available, until Sept. 20, at the Days Inn, 701-223-9151, (south of the Doublewood Inn) for \$58.65. The registration fee at \$35 (tax & gratuity included) will cover the cost of the Saturday and Sunday brunches and Saturday evening banquet. We will be serving coffee and donuts Saturday and Sunday morning. Early departures are discouraged unless prearranged. For additional information contact Frank Koch at

Bismarck, ND

58503

# 35<sup>th</sup> Annual Flickertail Woodcarving Show

## REGISTRATION

October 9 & 10, 2004

Fellowship Hall, Trinity Lutheran Church Basement

Corner of Ave A and 3<sup>rd</sup> Street

Bismarck, ND

Name \_\_\_\_\_ Phone \_\_\_\_\_  
Street \_\_\_\_\_ City \_\_\_\_\_  
State \_\_\_\_\_ Zip \_\_\_\_\_  
Email \_\_\_\_\_

Please complete the following by writing the amount in the events you plan to participate in. Note that the class size is limited to 12 and the workshops are filled in order of registration date. Show participants are given priority over nonparticipants.

Nancy Larson, Santa moon	Sat. & Sun	\$20.00	_____
Gary Paulson, Buffalo bust	Sat. & Sun	\$20.00	_____
Joan Meredith, Needle Weave	Sat. & Sun	\$20.00	_____

**Material fees are to be paid to the instructor.**

Basic registration fee:

Participating carver	\$35.00	_____
Noncarving spouse	\$30.00	_____
Extra Table (if available)	\$ 5.00	_____

**TOTAL** \_\_\_\_\_

Electricity will be available at center of exhibit area, please bring an extension cord if you need electricity.

**PLEASE BRING A DROP CLOTH TO CARVE OVER**

This carving show will allow you to sell your carvings at the show if you wish. State law requires that you collect sales tax.

I plan to participate in the carving exchange Saturday eve. Yes \_\_\_ No \_\_\_

\*\*\*\*\*

Return the completed registration form with a check by September 25, to  
Frank Koch, Bismarck, ND 58503

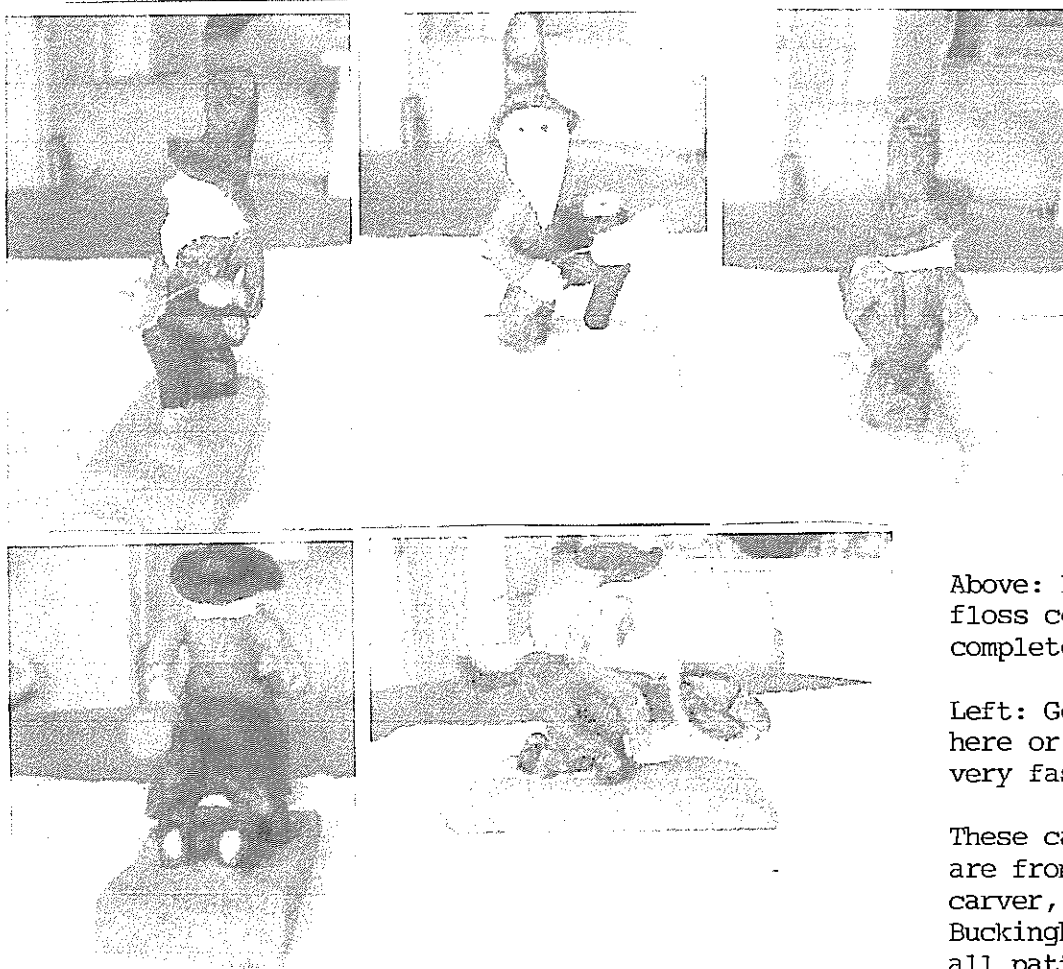
Send in this page for Show Registration

**Nancy Larson:** Santa Moon Class consists of 8" x 6" Santa head carved in a moon position. It is placed on a dowel inserted in a wood block stand. Bring standard carving tools and several paint brushes. This Sat. & Sun. morning class is appropriated for novice to advanced carvers.

The cost of the blank is \$15.

**Gary Paulson:** Buffalo bust is about 5.5" high. It includes the head and part of the chest and neck of the buffalo in basswood. This Sat. & Sun. morning project is appropriated for intermediate to advanced carvers. Bring a variety of palm tools, wood burner, and a knife for this project. The cost of the blank is \$20.

**Joan Meredith:** Needle Weaving is used to decorate things like pillows, t-shirts, etc. This Sat. & Sun. morning class is open to anyone. Cost of material is \$5.



Above: Do we really floss correctly and completely.

Left: Getting out of here or coming in very fast.

These carving photos are from our Calif. carver, William Buckingham. They are all patterns from the Enlow Collections.

The carving on left is slightly modified.

Registration for Gary Frank Perch Fish Class  
October 8, 9, 10 ,2004  
Trinity Lutheran Church  
Fellowship Hall (basement)  
Corner of Avenue A and 3<sup>rd</sup> Street

Time: all day Friday (8 am to about 5-6 pm ) and Sat. and Sun.  
morning (8 am to about 11:15am)

Tools: Standard tools needed to carve a 12 inch perch.  
Knife, assortment of gouges, sand paper, paint brushes,  
water container, paper towels, if you plan to use power tools  
you must bring a dust box, bring a air brush if you have  
one,

Cost: \$75.00, includes blank, habitat, and base

---

Send bottom half to Frank Koch,

Bismarck, ND 58503

Registration for Gary Frank Perch Fish Class  
October 8, 9, 10 ,2004  
Trinity Lutheran Church Basement  
Fellowship Hall  
Corner of Avenue A and 3<sup>rd</sup> Street

Name \_\_\_\_\_  
Address \_\_\_\_\_  
City, Town, Zip \_\_\_\_\_  
Phone \_\_\_\_\_  
Email \_\_\_\_\_  
Amount included: \_\_\_\_\_

Send in bottom half of this page for Gary Frank Class

35<sup>th</sup> Annual  
**FLICKERTAIL WOODCARVING SHOW**  
at the  
**Trinity Lutheran Church**  
**Bismarck, ND**  
Corner of Avenue A and 3<sup>rd</sup> Street  
**October 9 -10, 2004**

*Saturday: noon - 5:30 pm      Sunday: noon - 4:30 pm*

**FREE ADMISSION**

Theme: Lewis and Clark Expedition

*This year's featured carver is Gary Frank*

*Fish woodcarver from Eagle River, WI*

Gary Frank Carving Demo ( 2 - 4 pm Sat. & Sun)

See Woodcarving Demonstrations by Exhibitors

*Decorative Woodcarved Cane Display*

Woodcarving Supplies for Sale

*Woodcarvings for Sale by Exhibitors*

Purchase Raffle Tickets to win individual woodcarvings

Soap Carving Class, 2 – 3 pm, Saturday

*Register for Beginning Woodcarving Classes*

*Partial funding from Dakota West Arts Council Grant*

ACANTHUS WOOD CARVING CLASS  
WITH  
HANS SANDOM

DATE: Monday September 13th through Friday September 17th, 2004

INSTRUCTOR: Hans Sandom, is a professional carver. He was born in Atnadal,

Norway. Hans is a classical acanthus style carver and has over 24 years of experience. He has won the Gold Medal in national competition for excellence at Vesterheim Museum, Decora, Iowa and received first prize in

acanthus carving from the International Woodcarvers Congress in Davenport,

Iowa. He was commissioned to carve a memorial box to King Olav V, presented to King Harald V of Norway.

COST: \$200 for the five-day class. .

DEPOSIT: \$125 deposit, which will be refunded through August 31st, 2004.

Refunds

will be given up to three days prior to class time if there is a waiting list and the vacancy can be filled.

Description of class: Students will learn the basics in acanthus carving techniques.

Hans will work with beginning students as well those of you that are more advanced in acanthus techniques. The projects will be a shelf about 30 inches wide. If you are new to this type of carving, Hans would like you to do a bread board with acanthus scroll work. This is a very attractive breadboard and a great starter project. The price of the project will be separate from the class. Bob Lawrence will be cutting the projects out and will need to know what project you are planning to do. Please let him know below in the registration sheet. Call him if you have any questions.

CLASS SIZE: This class will be limited to eight or nine students on a first come first serve basis. Class will fill up fast so act quickly. A waiting list will be established students will be taken in order, in case

of any individual emergencies or cancellations.

SUPPLIES: Students will bring pencil, paper and his/her larger carving tools and mallet. (see attached sheet for tool suggestions.)

LOCATION: Bob Lawrence studio located at Fargo, No.

Dak.

Go through the gate on East side of house to the studio in the back yard.

Meals

will be NOT be served. You can bring a lunch or we will be going to a nearby local restaurant.

QUESTIONS: Call Bob Lawrence at

Clip and send the bottom of the letter to Bob Lawrence,  
Fargo, North Dakota 58102

Hans Sandom class Sept. 13 - 17, 2004.

NAME \_\_\_\_\_ PHONE \_\_\_\_\_

ADDRESS \_\_\_\_\_

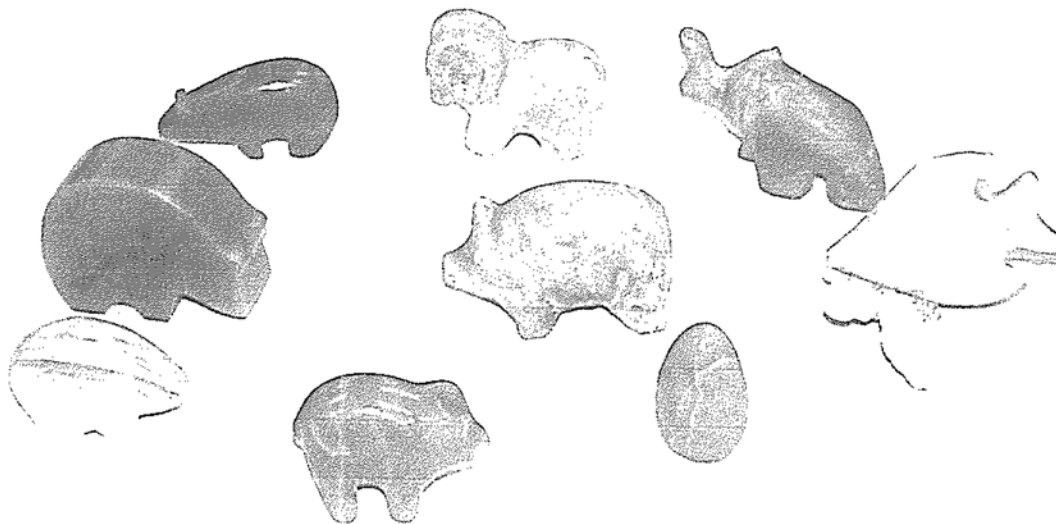
CITY \_\_\_\_\_ STATE \_\_\_\_\_ ZIP \_\_\_\_\_

Please check Project you would like to do:

\_\_\_\_\_ Breadboard, \_\_\_\_\_ 28 to

30 inch shelf

Payment: \$200 \_\_\_\_\_ Deposit \$125 \_\_\_\_\_ Acanthus carving class.



The above photo is some of the soap stone carvings that John & Clara Yonker's carving club in AZ. produced last winter.

Send in bottom half of this page for Fargo Class

# THE CURLING CHIP

Nov./Dec. 2004

THE NEWSLETTER OF FLICKERTAIL WOODCARVERS, BISMARCK/MANDAN,  
NORTH DAKOTA AND SURROUNDING AREAS.

## OFFICIALS AND EXECUTIVE BOARD:

President	Ed Homing
Past President	Mitch Olson
President Elect	Bob Pedigo
Secretary	Warren Schlecht
Treasurer	Ron Holtz
Membership	Stan Skarphol
Programs	Frank Koch
Property	Edwin Boger
Librarian	Perry Cook
Member at Large	Ed Homing
Member at Large	Ron Torgeson
Newsletter Editor	Robert Matzke
Asst. Newsletter, Labels	Sam Lacher
Asst. Newsletter, Mailing	Val Gabbert
Asst. Project Coordination	Jim Lindseth



Merry Christmas  
&  
Happy New Year  
Happy Carving!!

THIS NEWSLETTER IS SPONSORED IN PART BY DAKOTA WEST ARTS COUNCIL. THE CONTENT  
HEREIN IS DEDICATED TO THE ART OF WOODCARVING, MEMBERSHIP BENEFIT AND ENJOYMENT.

WHITTLE-INS ARE HELD THE 1<sup>ST</sup> TUESDAY OF THE MONTH, SEPT/MAY FROM 7-9 PM. REGULAR  
MEETINGS ARE HELD ON THE 3<sup>RD</sup> SATURDAY OF THE MONTH, SEPT/MAY FROM 9-11 AM. MEETINGS  
ARE HELD IN THE BASEMENT OF THE TRINITY LUTHERAN CHURCH, CORNER OF AVE. A AND 3<sup>RD</sup>  
STREET. SUMMER WHITTLE-INS, JUNE THROUGH AUGUST ARE HELD IN SHELTER # 4 IN SERTOMA  
PARK FROM 5 PM UNTIL DARK.

**FLICKERTAIL WOODCARVERS**

**P. O. BOX 7473**

**BISMARCK, NORTH DAKOTA 58507**

## 35<sup>TH</sup> ANNUAL SHOW;

Well, its history so we can talk about it. Was it fun? You bet! Did we learn anything? I sure hope so. The Club provided for some real good training. The food was good and friendship was comparable to none. The weather was even on our side.

What was different than years past? Well we changed show locations very close to the show date. Our meals and banquet were in different places. Lodging for attendees was in another location.

Did these impact on the show? I feel that they did, however, it was in the form of confusion. I think that any negative impacts can be overcome with clearer advertisement and information releases for the next show.

The internal operations also need to be perked up. I generally set up the tables and this year we had round tables instead of rectangle ones. This made for difficult arrangement. We had little airflow and access and recognition could have been better. I will work on this for the next show.

Speaking of recognition, I would ask all carvers to carve some form of self identification to use at their tables. ( Your name and where you are from ). It would also assist your table display if you could devise a sort of riser-stand display to put on the back edge of the table. The round tables are not the best for flat displays. We need to bring the viewers eyes from the front to the center and then back and forth across the back. If you could have a stand, say from 4 inches to maybe 12 inches tall with a couple shelves, that are nicely covered with a cloth. The problem would be corrected.

Parking is somewhat limited at the church. We can improve this ourselves by using the street and giving the lot space to the viewing public. The City does not mark cars for timed parking on the weekend. So no one should get a ticket unless they park illegally. The Club can also check with the owners of the lot to the south and see if it could be utilized for our event.

Can't find fault with the food. It was all very good. Both at the church and banquet. The personnel serving food were very good at their jobs and treated us very politely.

Our classes were good ones and gave the attendees some new information and techniques to take home. Some might complain that they didn't get finished with their carving or they didn't get it painted. The principle for many classes is to expose the attendee to as much information possible. Get them to understand

what they are about to do and allow them to carry on at home afterwards. If you expect to totally complete your carving then it would have to be a very simple and small one. Not to much to learn from that kind. That is why its important to take notes and get as far as you can in class. Its not the project, but the information you take with you that is important.

Advertisement was very good. Those who handled the papers and TV did well. We need to continue to imprint on the public's mind of our new location so we can have a better turnout for the 36<sup>th</sup> Show.

Our theme was Lewis and Clark. I saw a lot of examples, but maybe the subject was a bit too wide. Here is some food for thought. Since we hold our show on the opening of the North Dakota Pheasant Season, perhaps we could do some thing along the pheasant hunting idea. That way we might possibly draw some of the hunters to our show. I didn't see any this time.

The actual site was really good. We had mobility impaired access. The lighting was really good. Cleanup was a breeze with the tile floors. Even in the class rooms with carpet, we found it far easier to clean up this site than the last.

Now that we fully understand the functions of the 35<sup>th</sup> Show, we can work together to make the 36<sup>th</sup> even better than any others we have had.

## THANKYOU;

On behalf of the Club, I want to extend our appreciation for a job well done, to the instructors ( Gary Franks, Gary Paulson, Joann Meredith ). The Church staff and to all of you who participated in the show. You are encouraged to come again next year. You will be treated right and have the best time ever.

## WOOD VENDER 2005

Joe Jewett has informed me that he will be a wood vender at the 36<sup>th</sup> Show ( 2005). Joe prefers to serve club members who have specific needs/orders by having them call in ahead of the show. A month to several weeks is good. This way he can provide quality wood to your exacting needs and you will not have to compete with the general public for it. Joe can be reached at **COPPERHEAD ROAD LOGGING AND LUMBER,** Palisade, MN. 56469. Or you can phone him at

Give him a call, you'll be glad you did.

## FISH PAINTING CLASS;

The Club has arranged for a special fish painting class. It will be on November 20<sup>th</sup>. This class will consist of brush painting a walleye in a ceramic setting. I'm told that the instructor is very capable and can produce a brush finish that closely resembles airbrush painting. You will get the instruction and all the equipment for the small sum of \$25.00. This also includes the fish. For more information call Bob Pedigo at

### THOUGHTS ON SAFETY;

This past summer and fall, I had the occasion to witness accidents to carvers that should not have happened. These resulted in severe cuts to the fingers. There was a lot of blood and pain, plus the emotional impact. Why did these happen? Three reasons cover all the causes. 1) dull tools, 2) fatigue, and 3) not using safety equipment. Remember dull tools take more force to push through the wood. They slip often and can go through fingers a lot easier than wood. It only takes a few minutes every so often to strop the tool to keep it sharp and safe.

You are not super humans, you do get tired and even more quickly as we age. You need to take a break every now and then. Flex your hands and arms. Get the blood flowing and muscles de-stressed. Take a glass of water and clear the mind. You'll enjoy carving much more if you fresh.

Safety equipment is most important. Always use it. If you don't have it, purchase it right away. Kevlar gloves give a lot of protection from cuts. However, they will not stop punctures. They cost from \$10.00 to \$15.00. You could also use thumb and finger tabs. They're made of leather and prevent many minor cuts. They cost only \$2.00 to \$3.00 a set. If you can't afford the above, then think about getting some of the special cloth tape. It will prevent many of the little nicks, but not major cuts. You can get a whole roll for about \$2.00. You really can not afford to be without protection. Its is by far cheaper to purchase it then to pay for medical treatments or suffering scarring cuts and possibly cut nerves that tingle and cause pain even years afterwards.

Please look into safe carving.

### PASSING THE TORCH;

I have decided to step aside as Editor of the Curling Chip effective February 2005. I seem to have reached a plateau. The Club deserves new ideas, skills and ambitions to produce a

quality newsletter. I've been the editor for several years and have enjoyed the opportunity. I want to thank my faithful assistants, Sam Lacher, Val Gaabbert and Mike Senger for their valuable support in past and present. I also extend a thank you to those who contributed articles/patterns for the newsletter.

If you have computer skills, lots of ideas, a source for patterns and carving materials, plus free time, and wish to take a chance at the editor's duties, let it be known.

I will remain supportive of the new editor and will submit articles/patterns on a timely basis. Respectfully submitted;

Robert Matzke

### NICE CARVING;

You see a carving at a show that catches your eye. You exclaim NICE. Your right of course, but please don't stop at that. Why is it so NICE? What did the carver do to make you really like it? Was it subject matter, composition, coordination of the piece? Maybe it was the carving style. Maybe the finishing. How did the carver display the carving? These are the concerns that you need to be satisfied with. Understanding will assist you to improve your own carvings. Don't be afraid to ask some questions. Most carvers are proud of their ability and will freely share. There should be no secrets that prevent others from improving. I will leave you with this. NICE is NICE, but it may not be NICE enough.

### CLUB SPONSORED CLASSES;

How do you feel about this? I myself sometimes wonder why the club continues to sponsor classes. It is often very hard to fill the available spaces. Then I remember that I'm no expert. I don't know every technique or approach to carving. I sometimes find myself in a carving rut. Rather than plunge ahead in an ignorant condition, its far wiser for me to sign up for a class. The costs are relatively minor when compared with those in other parts of the country. Our club also contributes a portion of the costs to keep it lower for you.

So if you're in a rut or need to gain some experience, get with the program and take a class. You can not help but improve your carving abilities and learn something new. I've attended a number of classes, some were harder than others, but I learned something from each. Some of you might feel that you can't carve as well as so and so. So What!!!! We all started at

a zero point. Carvers are a sharing and friendly group. They will not put you down because you are learning. The only one who can put you down is yourself. Have a brave heart and take a class.

The Club exists to help you carve better and enjoy what you carve. Your taking classes help strengthen the Club.

### **LIBRARY & SHARPENER;**

Bob Pedigo reports that the club sharpener and library has been moved to the church. It is in a secure room. The Club President will have a key ( only key ). If the President can not be there then he/she will see that someone who will be attending the events will have it.

### **RAFFLE INFO;**

By Ron Holtz, Our yearly raffle is complete and we sold a combined total of 1254 tickets this year. Our expenses for printing and the permit was \$268.00, leaving us a net of \$986.00. This will be used for club expenses in the coming year. I want to extend a big Thank You to Mitch Olson who did the leg work in getting the paperwork done for the permit, lining up the printing and for preparing the final report to the Police Dept. Also thanks to Stan Skarphol for selling tickets at the door the two days of the show, for handling the drawing of prizes and delivering carvings to the winners. Thanks to all club members who sold and bought tickets. I appreciate your help. Your efforts make our club a better club. I want to thank all those members who donated carvings for the drawing.

The winners are as follows; Gregg Wiche of Bismarck ( Love Spoon ) Darlene Holtz of Bismarck ( Badger ) Marilyn Heidt of Bismarck ( Santa ) Larry Knudtson of Bismarck ( Shorebird ) Garry Freier of Bismarck ( Flag ) Jerome Cremers of Devils Lake ( Santa ) Joe Jewett of Palisade, MN. ( Jumping Pike ) Christina Lorge of Mandan ( Santa on Skies ) Phil L. Dahl of Mandan ( Fantail Bird ) Peggy Holzer of Mandan ( Character )

### **CHRISTMAS PARTY RESERVATIONS;**

The Christmas party this year is to be held at the Bismarck Kelly Inn on Saturday, December 18; one week before Christmas. Social hour is from 6:00 PM to 7:00 PM, with a buffet style dinner beginning at 7:00 PM. Dinner

includes a choice of two entrees and dessert. Cost for the dinner is \$14.50 per person.

There will be a carving exchange for the carvers and non-carvers. Carvers should bring a woodcarving or a woodcarving related item ( book, tool, patterns, etc. ). Non-carvers should bring a gift of not more than \$10 value if they wish to participate in the gift exchange.

We would like as many as possible to pre-pay by December 1, in order to provide the restaurant with an attendance count two weeks ahead of the party. This is needed so they can plan for the number of meals they will serve.

Checks payable to Flickertail Woodcarvers should be sent to Karen Pedigo before December 1. Send your checks to the following address: Karen Pedigo, Bismarck, ND 58504, Phone

Send in your money, mark your calendars, and hope to see you there.

### **SPECIAL NOTE;**

The Club has donated \$5.00 per couple towards the meals for your benefit. That is why the prices are lower than mentioned earlier this year. That equals money in your pocket, give them a nice thank you the next time you see an E-Bd Member.



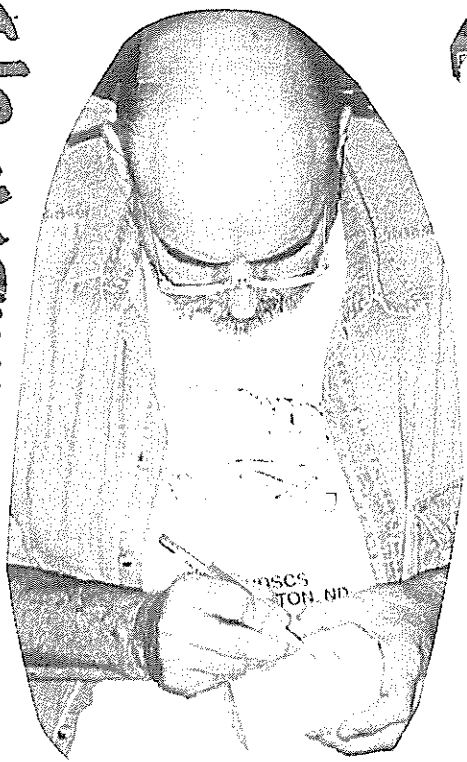
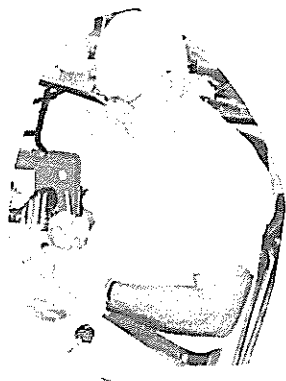
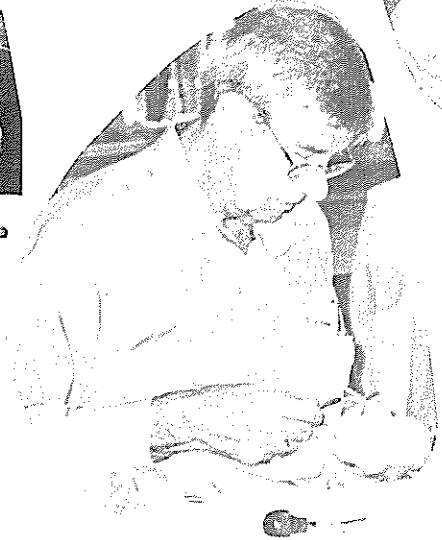
GARY DON FRANK:

The Flickertail woodcarvers wanted a good fish carver for the 35th Show. So they made contact with Gary and his wife Laurel of Eagle River, WI.

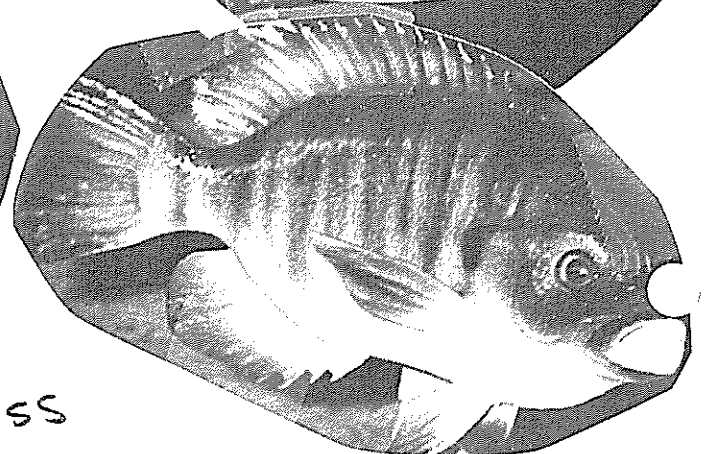
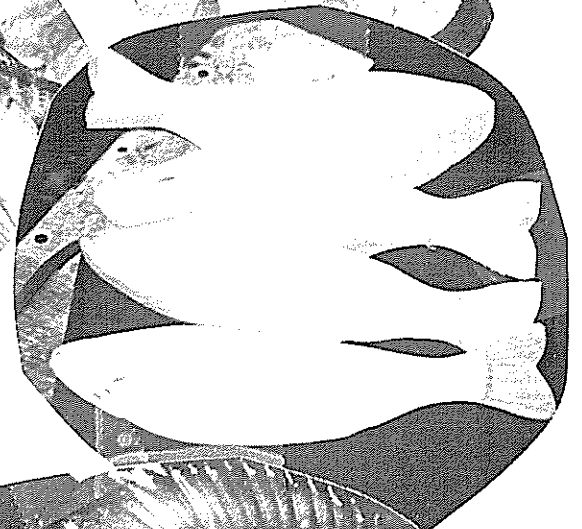
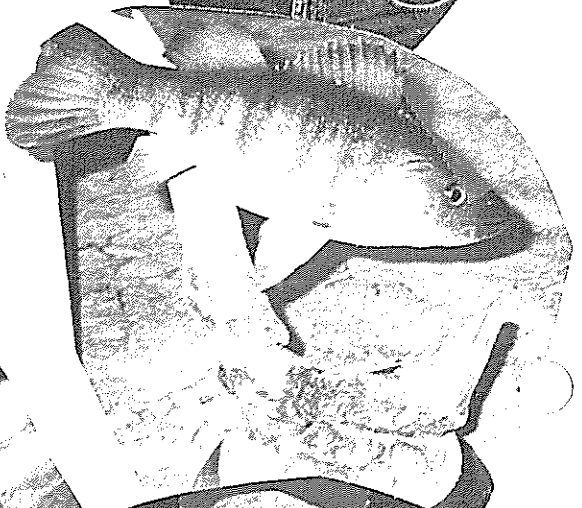
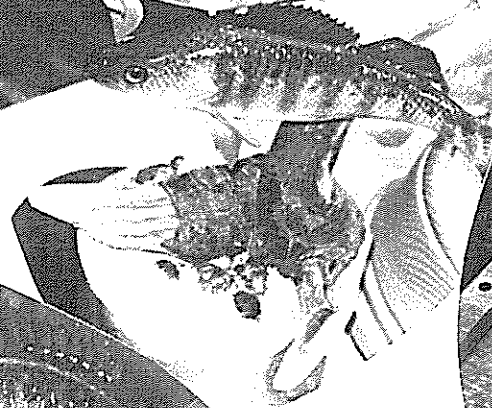
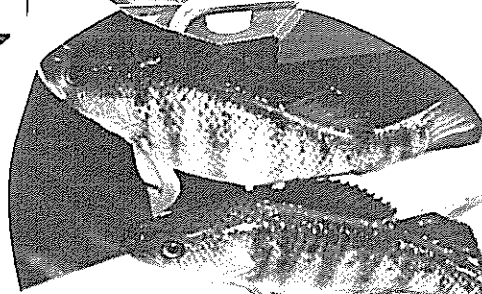
Gary started carving 25 yrs ago. He picked up a piece of wood and carved a trout, just for the fun of it. As years went by, he began to go to competitions for fish carving. This was a large learning experience for him. He is 100% self-taught. He has never taken a class at all.

He specializes in fish and has won many master competitions. He also carves wildlife animals, human busts and beautiful flowers.

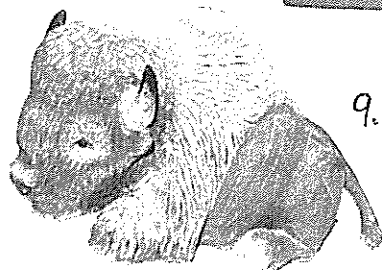
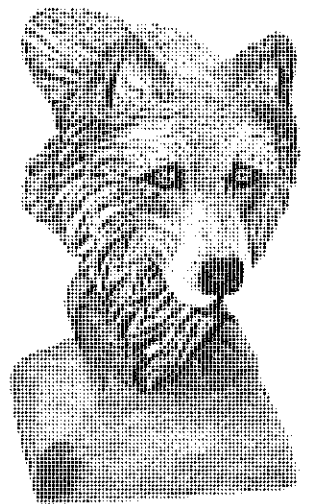
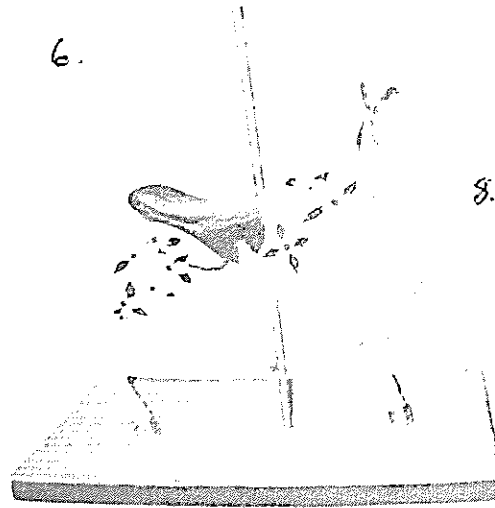
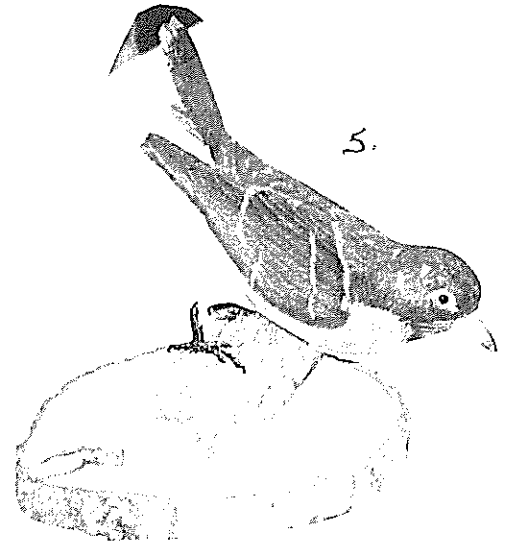
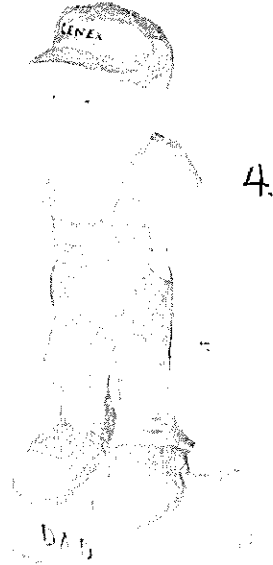
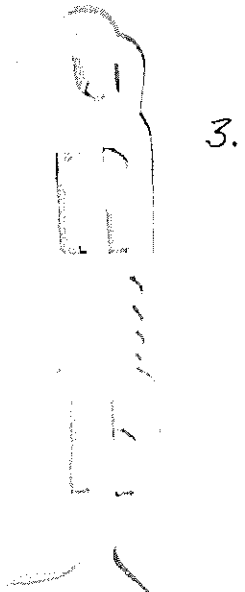
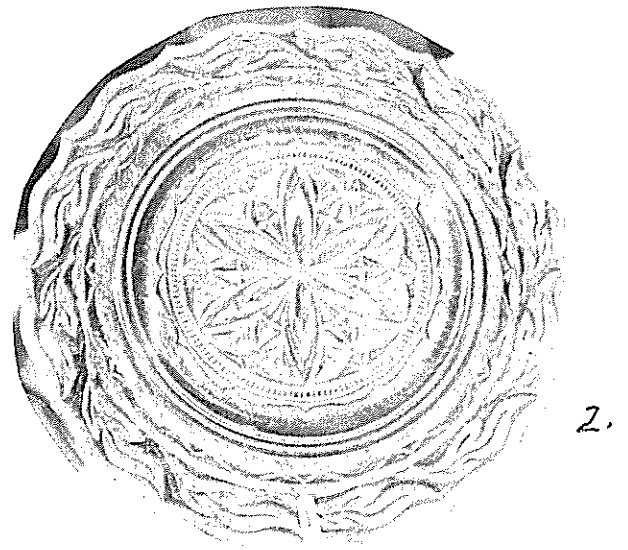
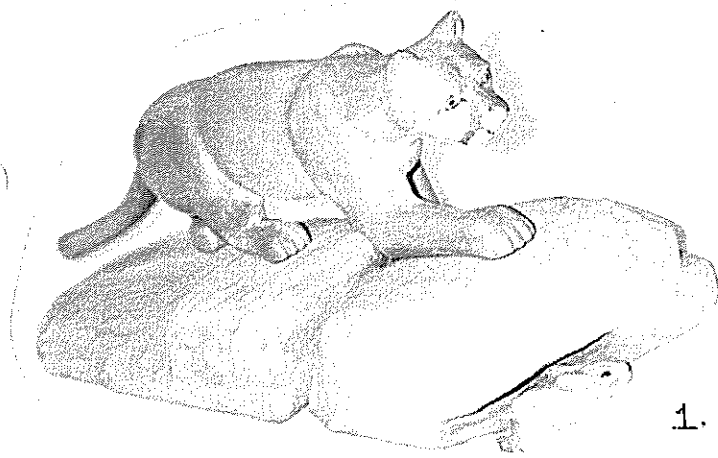
But his true love is fresh water fish.



පාසුකරු



Fish  
Class





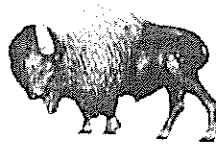
11.



12.



13.

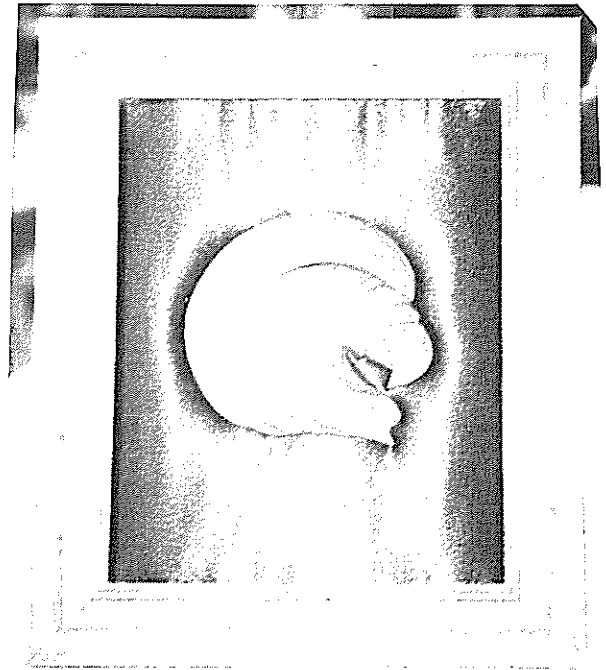


16.

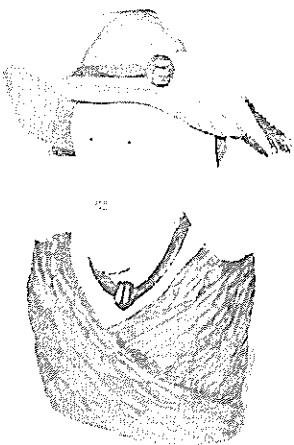


15.

14.



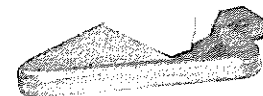
19.



18.



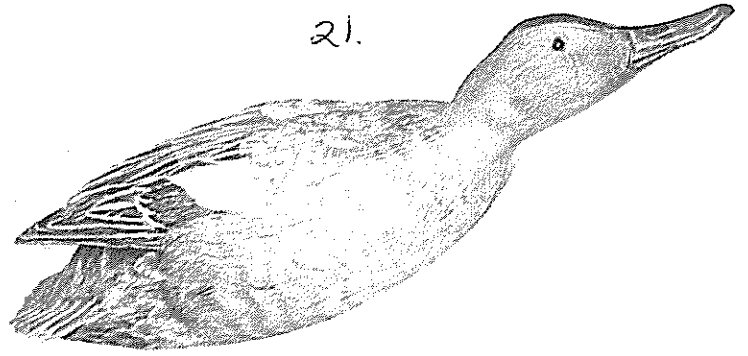
17.



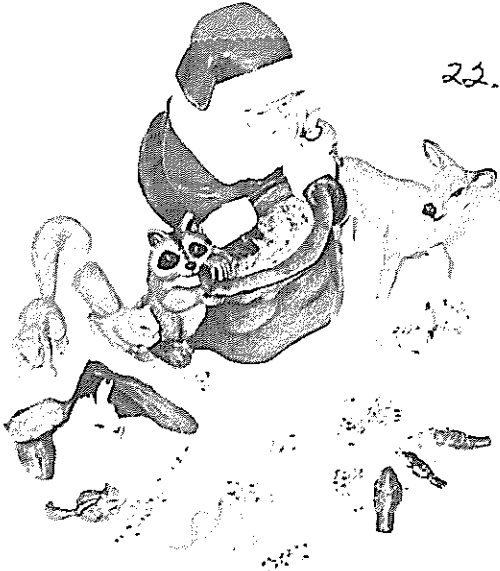
20.



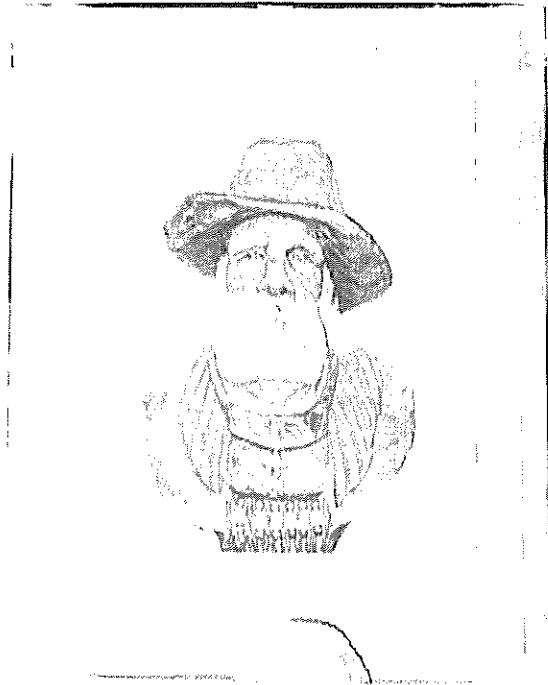
21.



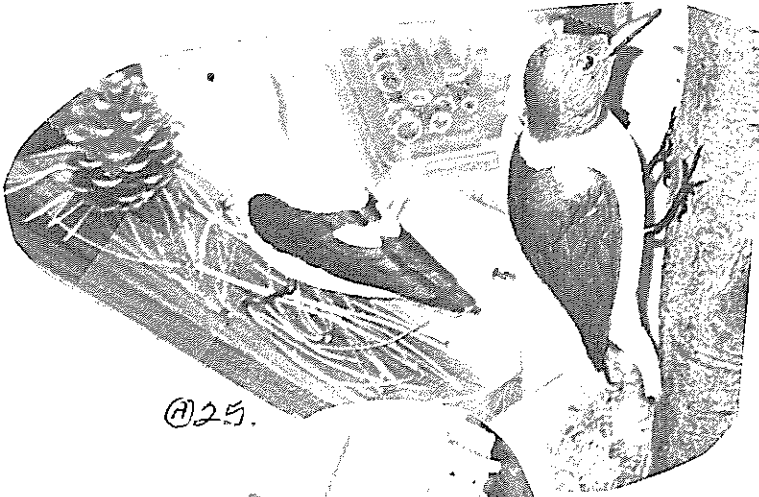
22.



23.



25.

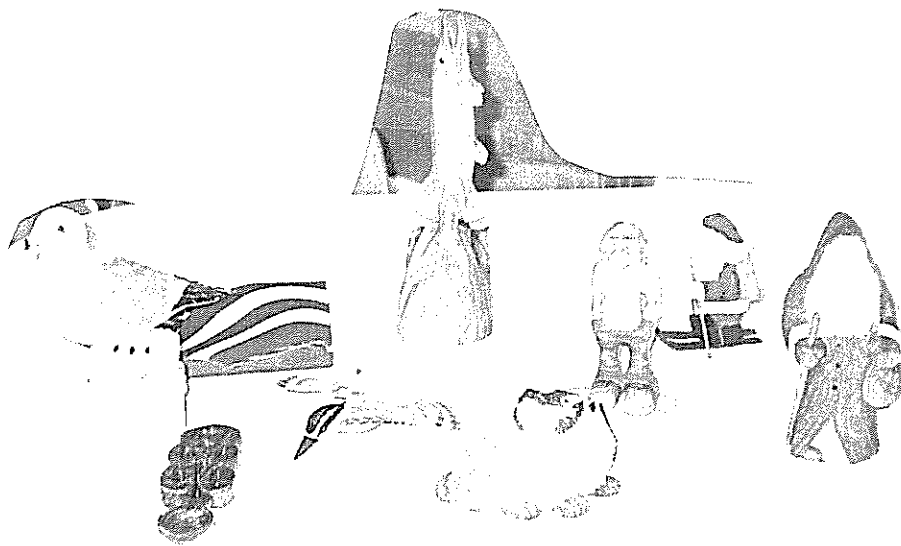


25.



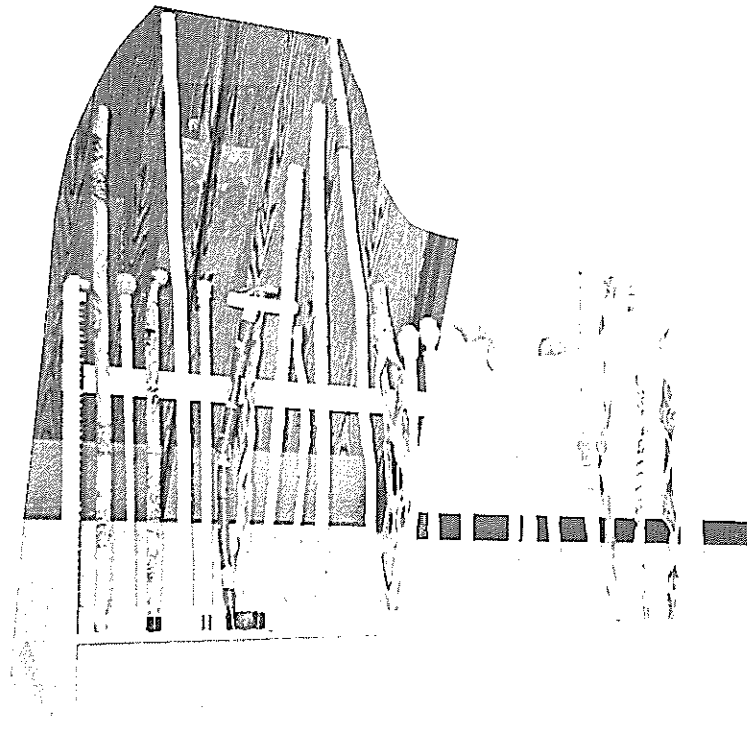
24.





#### RAFFLE PRIZES:

This year there were some really nice raffle prizes. Hopefull we can have even more next year. The more and the better the carvings the more funding for the club.

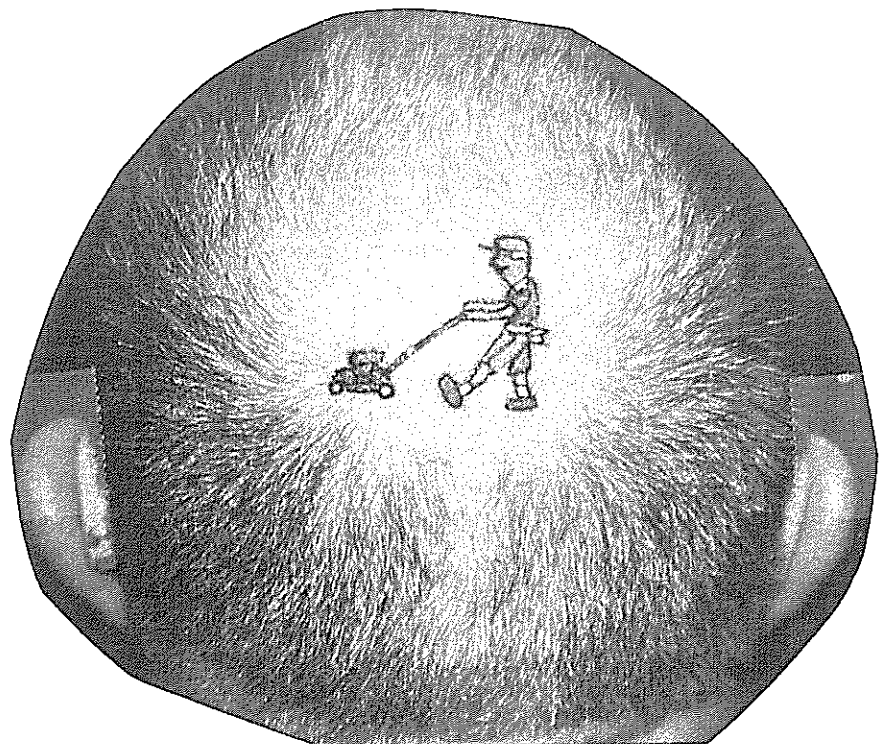


#### CANE DISPLAY:

Talk about carving art. The canes had it. Too bad the photo is so small. We had displayed the canes at the Library earlier and had a good crowd. Viewers felt this display was really good.

#### LAWN MOWER MAN:

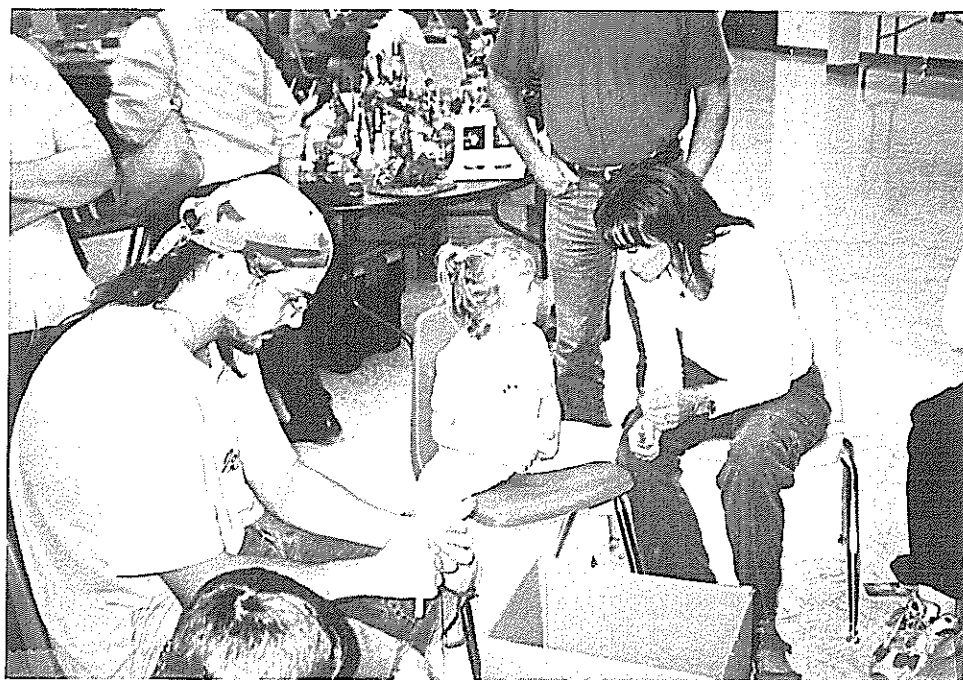
Some like to keep their areas neatly mowed. Cliff Rime went a step further and placed a permanent mower in place. Cliff had a tatoo placed on his head. He said people always joked about his balding spot so he felt it would make for a good joke. Cliff likes a good laugh. So do we. Thanks Cliff....





#### SOAP CARVING CLASS:

The Soap carving class does well. Frank Koch instructor for the second year. The class drew young and old alike. The little girl is Anna Thomas and Mom Lauri from Horace, ND This is a good way to start young people carving.



#### NON-CARVERS CLASS:

( Needle Weaving )

Bonnie Cook/Bismarck,ND

Karen Pedigo/Bismarck ND

Jean Davidson/ Sask. Sask.

Ann Bell/Prince Albert Sask.

Aggie Dawson/ Regina Sask.

Nona Rime/Garrison ND

Joann Meredith/Instructor

Casa Grande AZ

( not all attendees pictured )



LEGEND FOR BUFFALO CLASS:(Page 5 )  
 Instructor - Gary Paulson/Fargo, ND  
 Jim Lindseth/Bismarck ND  
 Barry Bell/Prince Albert, Sask.  
 Klaes Welch/Mandan ND  
 Ron Davidson/Saskatoon Sask.  
 Bob Dawson/Regina Sask.  
 Richard Anderson/Mapleton ND  
 Ardell Quam/Mandan ND  
 Perry Cook/Bismarck ND  
 Howard Rasmusson/Fargo ND  
 Marlin Nantt/ West Fargo ND

LEGEND FOR FISH CLASS; ( Page 6 )  
 Ron Torgeson/Bismarck ND  
 Ron Holtz/Bismarck ND  
 Frank Koch/Bismarck ND  
 Bob Pedigo/Bismarck ND  
 Cliff Rime/Garrison ND  
 Larry Groth/North Dakota  
 Bob Matzke/Bismarck ND  
 Instructor - Gary Frank/Eagle River WI

#### LEGEND FOR INDIVIDUAL CARVER DISPLAYS:

- |     |                  |                      |
|-----|------------------|----------------------|
| 1.  | Ron Davidson     | Mt. Lion             |
| 2.  | Ray Roemmich     | Chip Carved Plate    |
| 3.  | Larry Groth      | Love Spoon- Chain    |
| 4.  | Ron Holtz        | Fisherman            |
| 5.  | Howard Rasmusson | Robin                |
| 6.  | Bob Dawson       | Santa Bust           |
| 7.  | Richard Anderson | Bear                 |
| 8.  | Stan Dolbinski   | Carasel Horse        |
| 9.  | John Yonker      | Bison                |
| 10. | Clara Yonker     | Wolf Head            |
| 11. | Jim Lindseth     | Flying Mallard Duck  |
| 12. | Marlin Nantt     | Santa Plate          |
| 13. | Ed Horning       | Flying Mallard Duck  |
| 14. | Warren Schlecht  | Eagle Head in Frame  |
| 15. | Gary Paulson     | Buffalo Spoon        |
| 16. | Barry Bell       | Golfer               |
| 17. | Vince Bitz       | Deer                 |
| 18. | Cliff Rime       | Mountain Man         |
| 19. | Richard Wehner   | Cowboy Santa         |
| 20. | Bob Matzke       | Bear                 |
| 21. | Bob Gausvik      | Cinnamon Teal        |
| 22. | Pat Moore        | Santa's Last Stop    |
| 23. | Bob Lawrence     | Mountain Man         |
| 24. | Gary Frank       | Elk                  |
| 25. | Frank Koch       | Nuthatch & Fisherman |

#### CALENDAR OF EVENTS:

Nov.20 Mtg. Kingsbury Sioux Relief,  
 Jim Lindseth will instruct.  
 Dec. 7 Whittle-in Ron Holtz- Santa  
 Dec 18 Mtg. Jim Lindseth - Angel  
 Christmas Party at Menerva's  
 Have a HAPPY NEW YEAR ( 2005 ) \*\*\*\*\*  
 Jan.4 Whittle-in Proj. TBA  
 Jan.15 Mtg. Frank Koch - Snow Snakes  
 Feb. 1 Whittle-in Frank Koch - Love  
 Spoons  
 Feb. 19 Mtg. Bob Pedigo - Quacking Duck  
 Caracture  
 Mar. 1 Whittle-in Proj TBA  
 Mar. 19 Mtg. Warren Schlecht - Flag  
 Apr. 5 Whittle-in Proj TBA  
 Apr. 16 Mtg. Proj TBA  
 May 3 Whittle-in Proj TBA  
 May 21 Mtg. Proj TBA  
 June Begin Summer Schedule in Park

#### DEMONSTRATIONS:

Sept. 15, Bob Pedigo provided a demo and  
 discussion at the Edgewood Vista assisted  
 living center in Bismarck.

#### ORNAMENT DAY IN GARRISON ND

On Oct. 30th, several members of the Bismarck  
 club joined the Sakakawea Carvers in the MEC  
 Bldg. to carve Christmas Ornaments. There  
 were several different classes on Bears, Deer,  
 Santas, Toy Soldiers and Snowmen/ladies.  
 There was special classes for non-carvers  
 17 carvers and 9 non-carvers participated.  
 A lunch was served and all had a very good  
 time.

#### HILITES FROM SEPT. 7th MTG.

Treasurer's books audited-checked out OKAY  
 There was \$2300.00 in ACCT.  
 Newsletter via mail or e-mail. The poll was  
 about 50/50. We will start process with the  
 Jan/Feb. issue.  
 Grants for 2005 are being applied for.  
 Club changed to American Family for Insurance  
 had to pay \$194.00 for 500,000.00 coverage.  
 Stan Skarpohl is still collecting pop-tops  
 for Ronald McDonald House. If you can get  
 him some more.

#### WANTED POSTERS:

Delores Gausvik took photo's at Banquet. 1  
 shown are WANTED, Yes, wanted to return for  
 next years show and banquet.



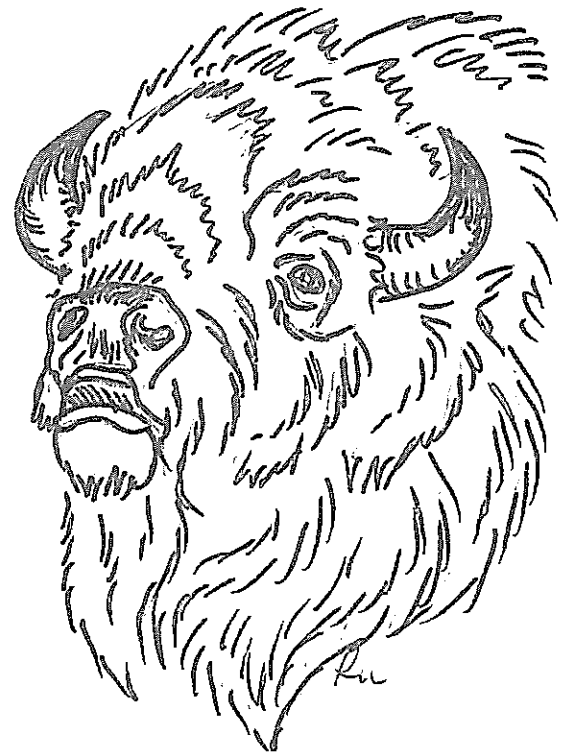
ALERT:\*\*\*\*

Have you seen any of these people.  
they are wanted. If seen notify the  
Flickertail Woodcarvers prior to Oct.  
2005 so that they may be extradited to  
Bismarck ND in time for the 36th Annual  
Carving Show.



This is the figurine pattern Bob Matzke gave to those who carved at his home this past summer. Using it, you can make Indians, Mums, Water girls and many more. Lu

Holly Ornament - Use 1/4 stock Relief Carve then tool in letters w/ V-tool.



Try V-Tooling this pattern on to the top of a wooden box. Then stain the tool marks like chip carving.

